



FOR YOUR HOME & BUSINESS

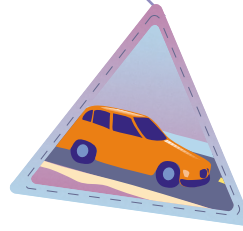
Using detergents, cleaners, solvents, & paints?

- Buy “non toxic” products
- Use sparingly and follow application directions
- Store house maintenance products away from rain and runoff
- Clean up spills
- Dispose of properly at Tucson/Pima County Household Hazardous Waste (HHW)

FOR YOUR YARD

Working in your yard?

- Use pesticides, insecticides, herbicides or fertilizers appropriately
 - Use sparingly and follow product directions
 - Never apply during rain or immediately before a storm
 - Clean up spills
 - Dispose of properly (HHW)
- Clean up yard debris - keep it out of streets, alleys, and washes
- Clean up pet waste
- Control erosion in your yard by landscaping bare areas



FOR YOUR VEHICLES

Maintaining your vehicles?

- Change oil properly
Collect drips and clean up spills
- Keep your vehicle “leak free”
Check your parking areas for drips & stains
- Wash your vehicle at commercial carwashes that can recycle water or send it to the sanitary sewer
- Tune up your vehicle to reduce tailpipe emissions
- Reduce pollution at the source, drive less (carpool, ride the bus, bike, or walk)

Recycling used fluids or parts?

- The following can be recycled at place of purchase or disposed of at Tucson/Pima County Household Hazardous Waste (HHW)
 - Oil and oil filters
 - Fuel: gas and diesel
 - Fluids: transmission, radiator, brake
 - Parts: batteries and tires



Tucson/Pima County Household Hazardous Waste (HHW)

Main Location:

2440 Sweetwater Drive (Prince and I-10)
Fridays & Saturdays: 8 am-Noon

For other times & locations call (520) 888-6947
www.deq.pima.gov/waste/househol.htm



Prevent Stormwater POLLUTION



WE ARE ALL WORKING TO PREVENT STORMWATER POLLUTION

Town of Marana
(520) 297-2920
www.marana.com

Town of Oro Valley
Department of Public Works
(520) 229-4880
www.townoforovalley.com

City of South Tucson
Planning Department
(520) 792-2424

City of Tucson
Department of Transportation
Stormwater Management Section
(520) 791-4251
www.dot.ci.tucson.az.us/stormwater

Pima County
Dept. of Environmental Quality
(520) 740-3340
www.deq.pima.gov

Pascua Yaqui Tribe
Department of Public Safety
Environmental Protection
(520) 879-5600

Town of Sahuarita
Department of Engineering
(520) 648-1972
www.ci.sahuarita.az.us

Tohono O'odham Nation
Department of Public Safety
(520) 383-8690

Pima Association of Governments
and the Stormwater Management Working Group
www.pagnet.org (520) 792-1093



STORMWATER POLLUTION occurs when
rain water runoff transports oil, grease,
and trash to our fragile washes.

Keeping stormwater clean and protecting
our desert is a job for all of us.