

TRAVEL REDUCTION PROGRAM 2007 REGIONAL SURVEY RESULTS

Rita A. Hildebrand, TRP Lead
(520) 792-1093 rhildebrand@pagnet.org

Jurisdictions

Pima Association of Governments

- Pima County
- City of Tucson
- City of South Tucson
- Town of Marana
- Town of Oro Valley
- Town of Sahuarita
- Pascua Yaqui Tribe (Non-TRP)
- Tohono O'odham Nation (Non-TRP)

Regional Task Force Members

MAJOR EMPLOYERS (10) – Elected

Cathy Arnit	Tucson Airport Authority
Karen Brink	Tucson Marriott University Park
Charles Franz	The University of Arizona
Ron Gonzales	Raytheon Missile Systems
Petronilla Howell	Catalina Mountain School
Jennifer King	Tucson Electric Power Company
Joe Portale	Pima County Community College District
Barbara Ricca	IBM
Kate Riley	Sun Tran
Willie Wash	Arizona State Prison - Tucson Complex

JURISDICTION REPRESENTATIVES (6)

Beth Gorman	Pima County
Nancy Ellis	Town of Oro Valley
Monique Manriquez	Town of Marana
Yolanda Parker	City of Tucson
Richard Salaz	City of South Tucson
Vacant	Town of Sahuarita

PUBLIC INTEREST ORGANIZATION REPRESENTATIVES (2) -Vacant

VOLUNTARY TRP PARTICIPANTS (2) - Vacant

Ordinance Mandates

(Employer \geq 100 FTE)

- Appoint a Transportation Coordinator
- Distribute Alternate Mode Information
- Annually Survey Employees
- Annually Submit a TRP Plan

AMU Goals

Compliance Year	AMU Goal
Baseline	N/A
1st	15%
2nd	20%
3rd	25%
4th	26%
5th	27%
6th	28%
7th	29%
8th	30%
9th	31%
10th	32%
11th	33%
12th	34%
13th	35%
14th	36%
15th	37%
16th	38%
17th	39%
18th	40%

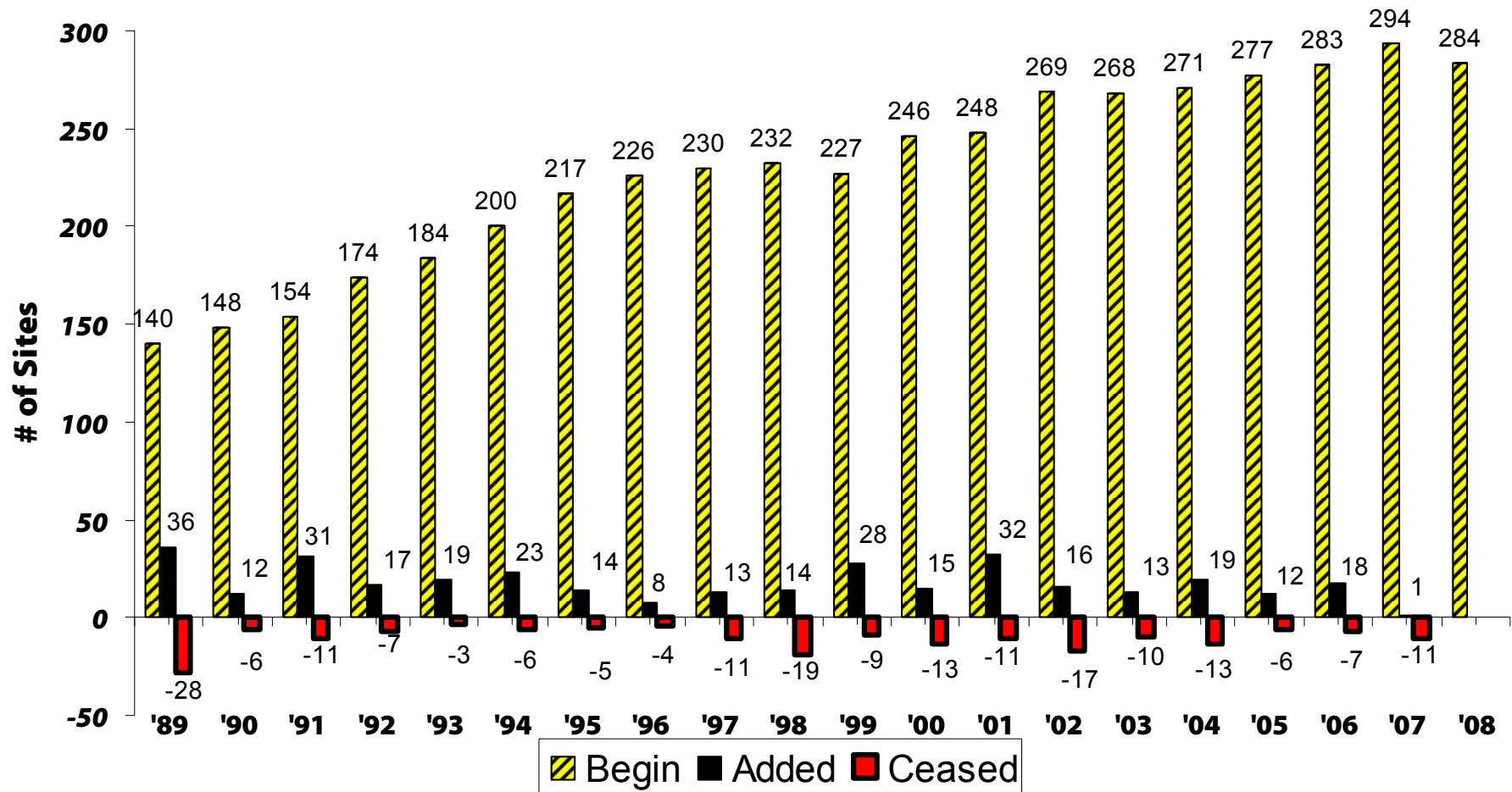
AMU:

Alternate Mode Usage
(one day a week)

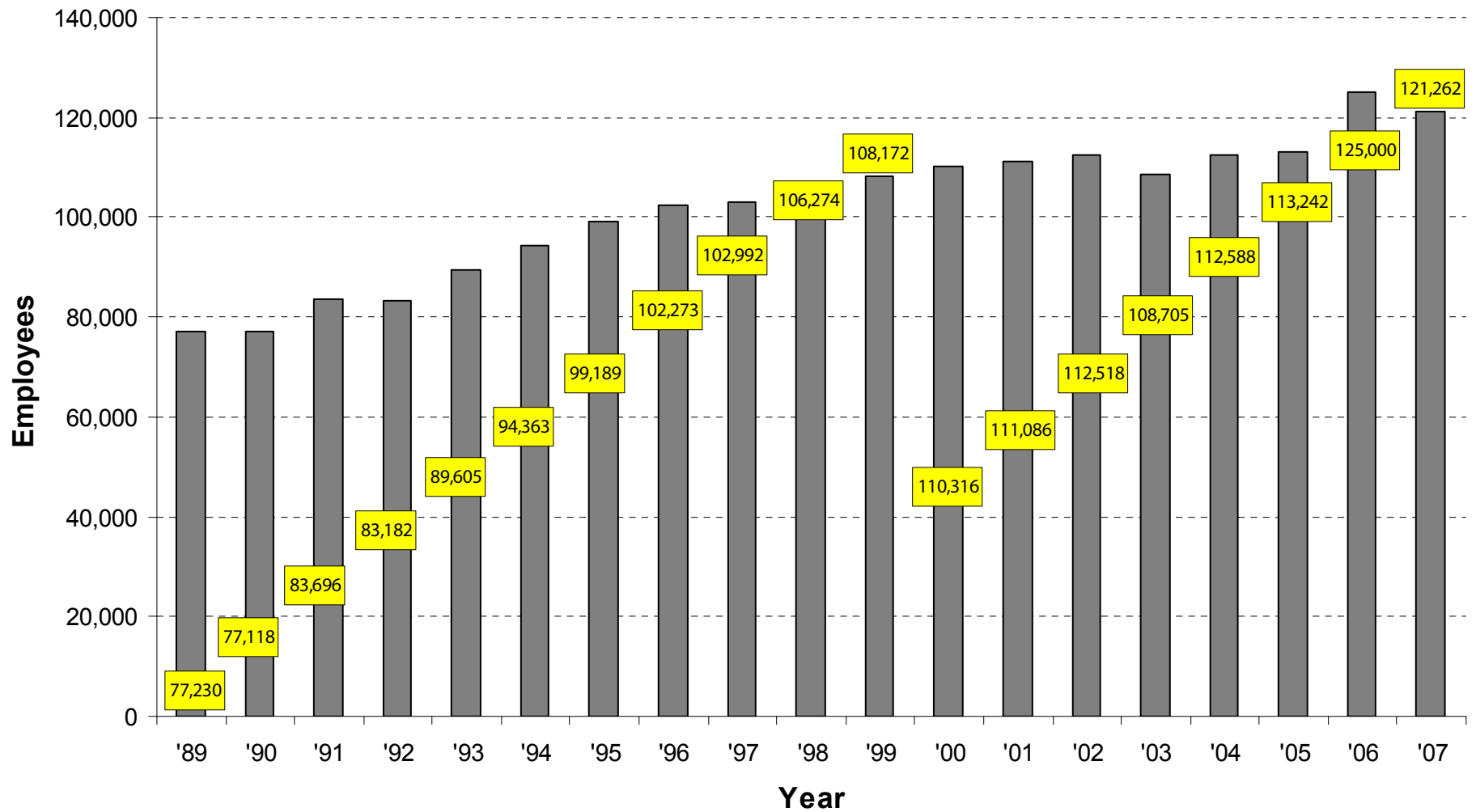
After 3rd Compliance year,
AMU goal increases by
1% until 40% cap is reached.

Note: For 3rd compliance year or greater an alternate goal of 1.5% reduction in Vehicle Miles Traveled (from previous year) is applicable if the site achieves an AMU of 25% or more.

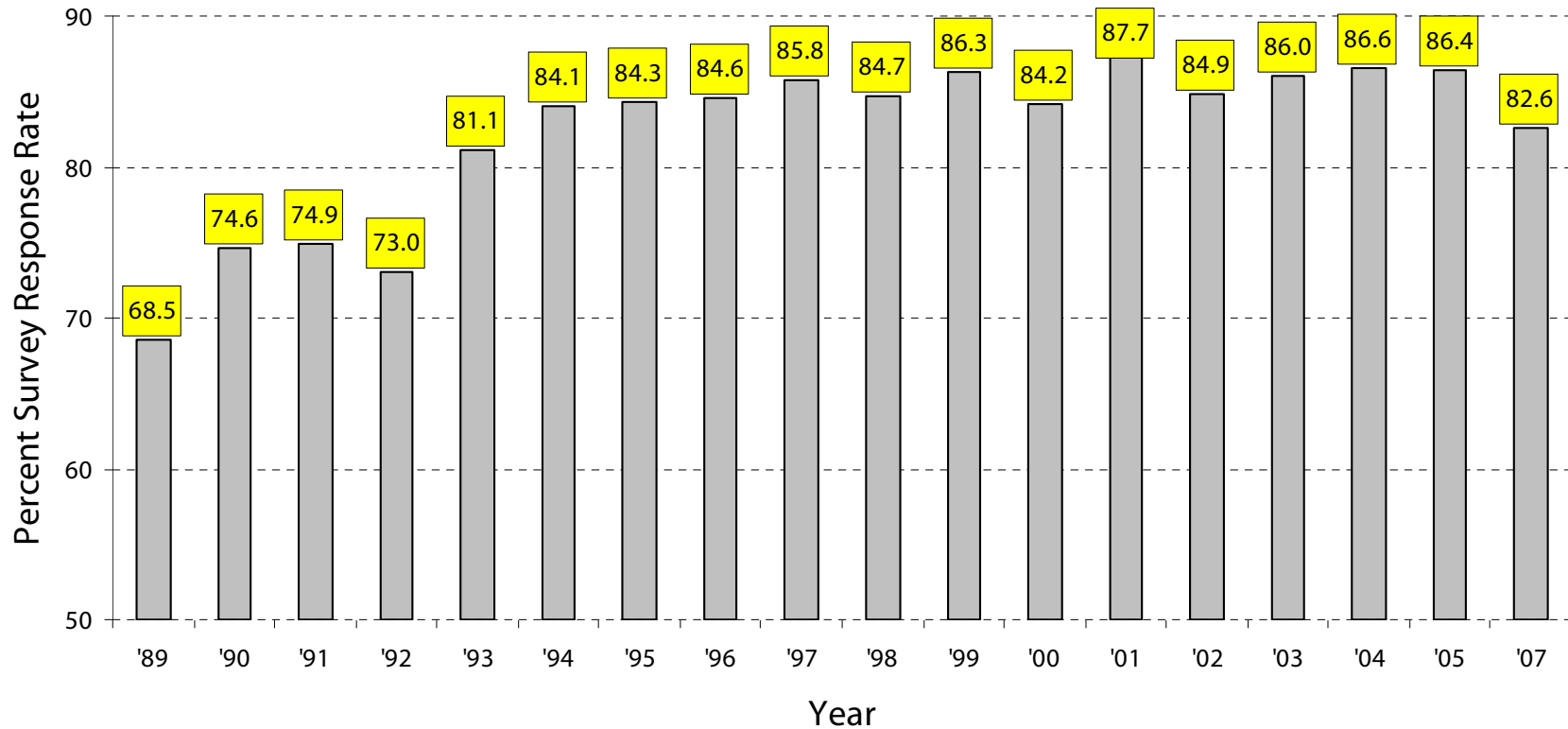
Participating Sites



Number of Employees

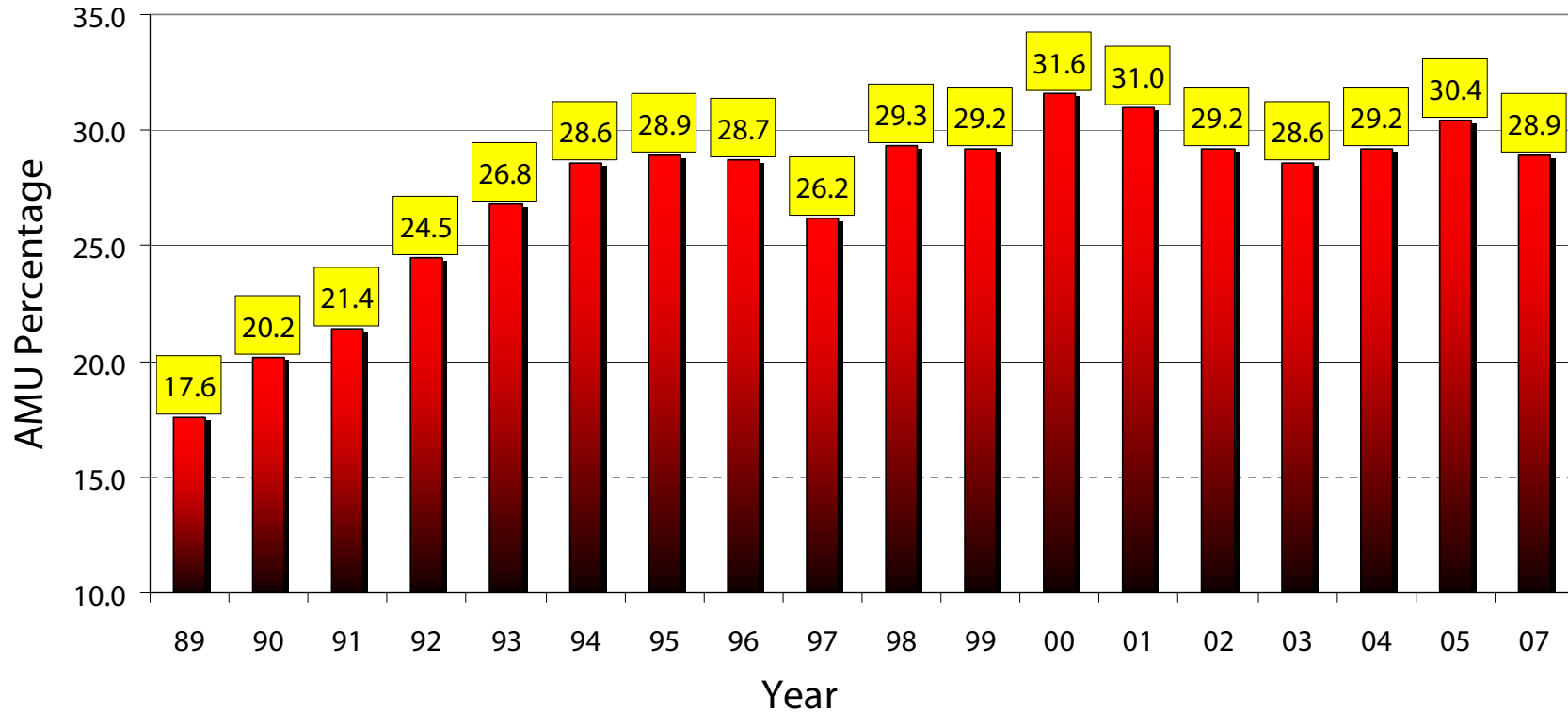


Survey Response Rate



2006 – No survey was conducted.
Minimum Survey Response Rate 70%

Alternate Mode Usage



Goal Range = 15% to 40% (depending on years in program)
Based on one day a week usage.
2006 – No survey was conducted.

Alternate Mode Usage (AMU)

EMPLOYEES EARN AMU CREDIT BY:

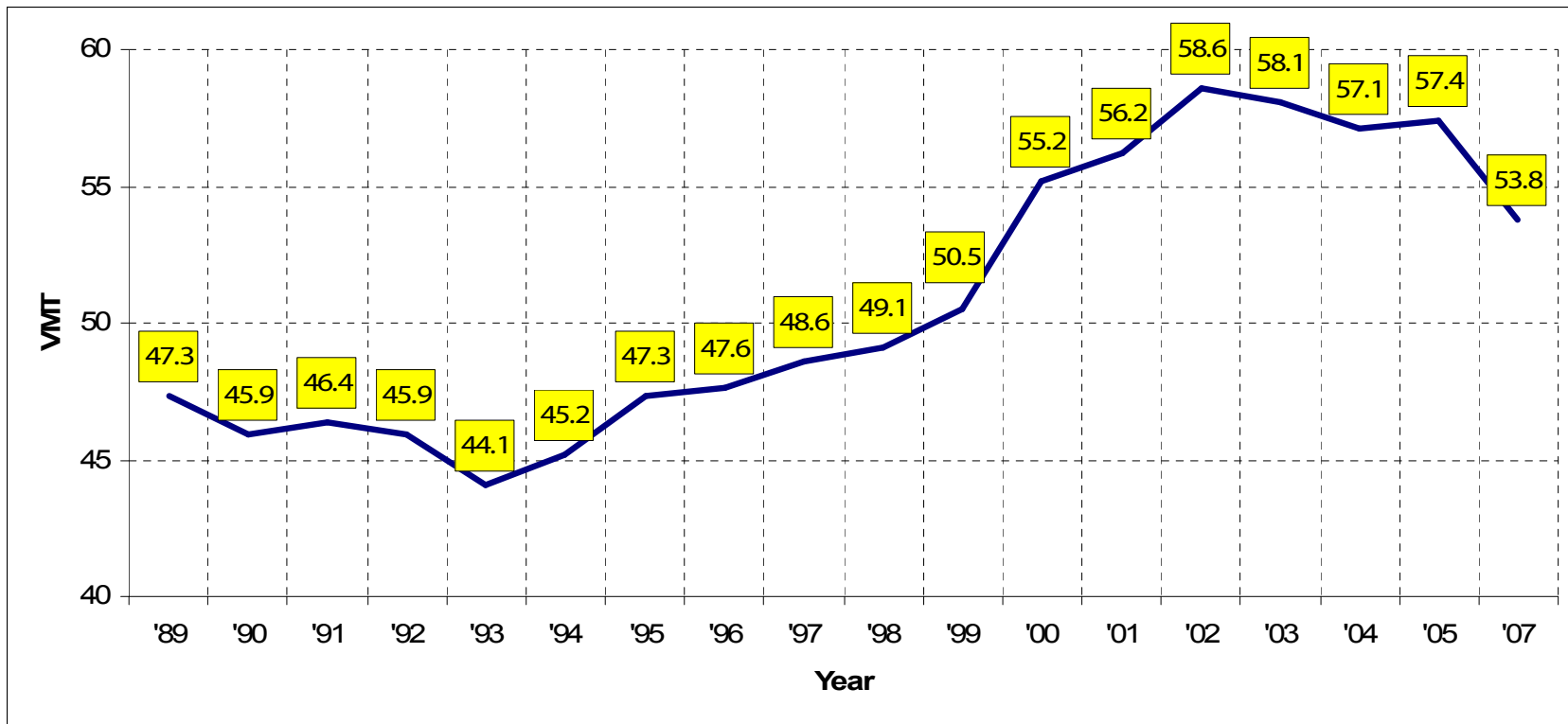
- CARPOOLING
- VANPOOLING
- RIDING THE BUS
- BICYCLING
- WALKING
- TELEWORKING/WORKING AT HOME
- DRIVING TO THE JOB SITE WITHOUT GOING TO THE TRP WORK SITE
- USING A CLEAN FUEL VEHICLE
- WORKING A COMPRESSED WORK WEEK (CWW)
(Note: A 9/80 CWW = ½ credit)

Alternate Mode usage (AMU)

(continued)

- MUST BE FOR THE HOME-TO-WORK COMMUTE
- SPECIAL PROGRAMS MUST BE AUTHORIZED BY COMPANY
- NO DOUBLE COUNTING
 - CREDIT IS ONLY GIVEN FOR THE FIRST AMU ON THE PREVIOUS LIST THAT APPLIES
 - For Example: If someone rides the bus and bicycles, they will only get AMU credit for bus.
- CALCULATED AS:
 - # OF AMU CREDITS
 - TOTAL # OF EMPLOYEES

Vehicle Miles Traveled*



* The VMT is the regional one-way weekly miles traveled from home to work factored by occupants in a motor vehicle.

Vehicle Miles Traveled (VMT) Example Calculation

OWM = One Way Miles

DPW = Days Per Week

- Mary's Drive Alone VMT = $10 \text{ OWM} * 5 \text{ DPW} / 1 \text{ person in vehicle} = 50 \text{ Miles}$
- Tom's Carpool VMT = $18 \text{ OWM} * 5 \text{ DPW} / 3 \text{ person in vehicle} = 30 \text{ Miles}$
- Joan's Bus VMT = $0 \text{ OWM} * 5 \text{ DPW} = 0 \text{ Miles}$

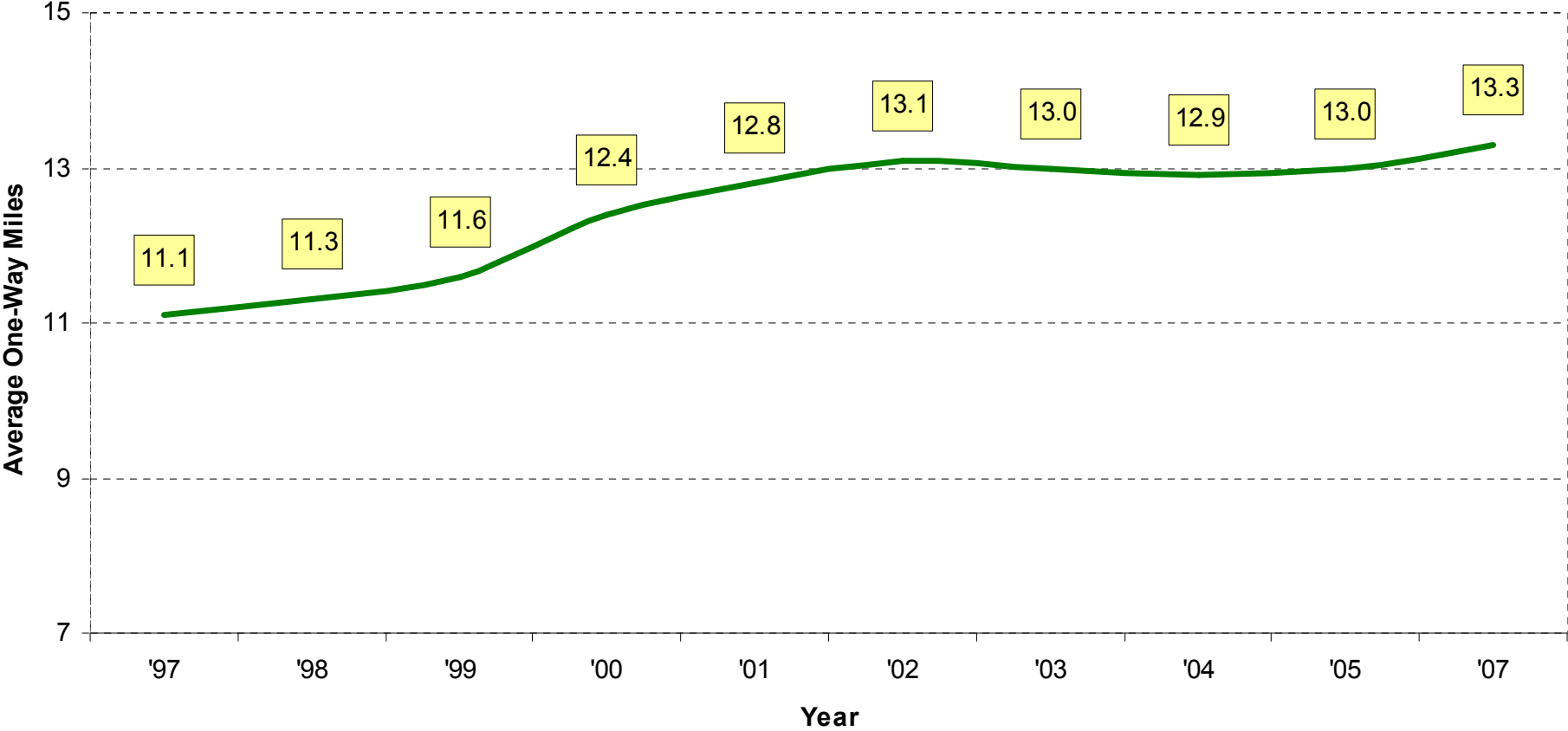
Note: Bus ridership varies and, for TRP Calculation, 0 miles contributed to the company's average.

- Mike's Bicycle or Walking VMT = $0 \text{ OWM} * 5 \text{ DPW} = 0 \text{ Miles}$

Note: Bicycle and walking miles are non-polluting, therefore 0 miles contribute to the company's average.

Note: Currently clean fuel vehicle miles are not factored out of individual VMT.

One-Way Miles



2005 Average One-Way Miles: 13

One-Way Minutes

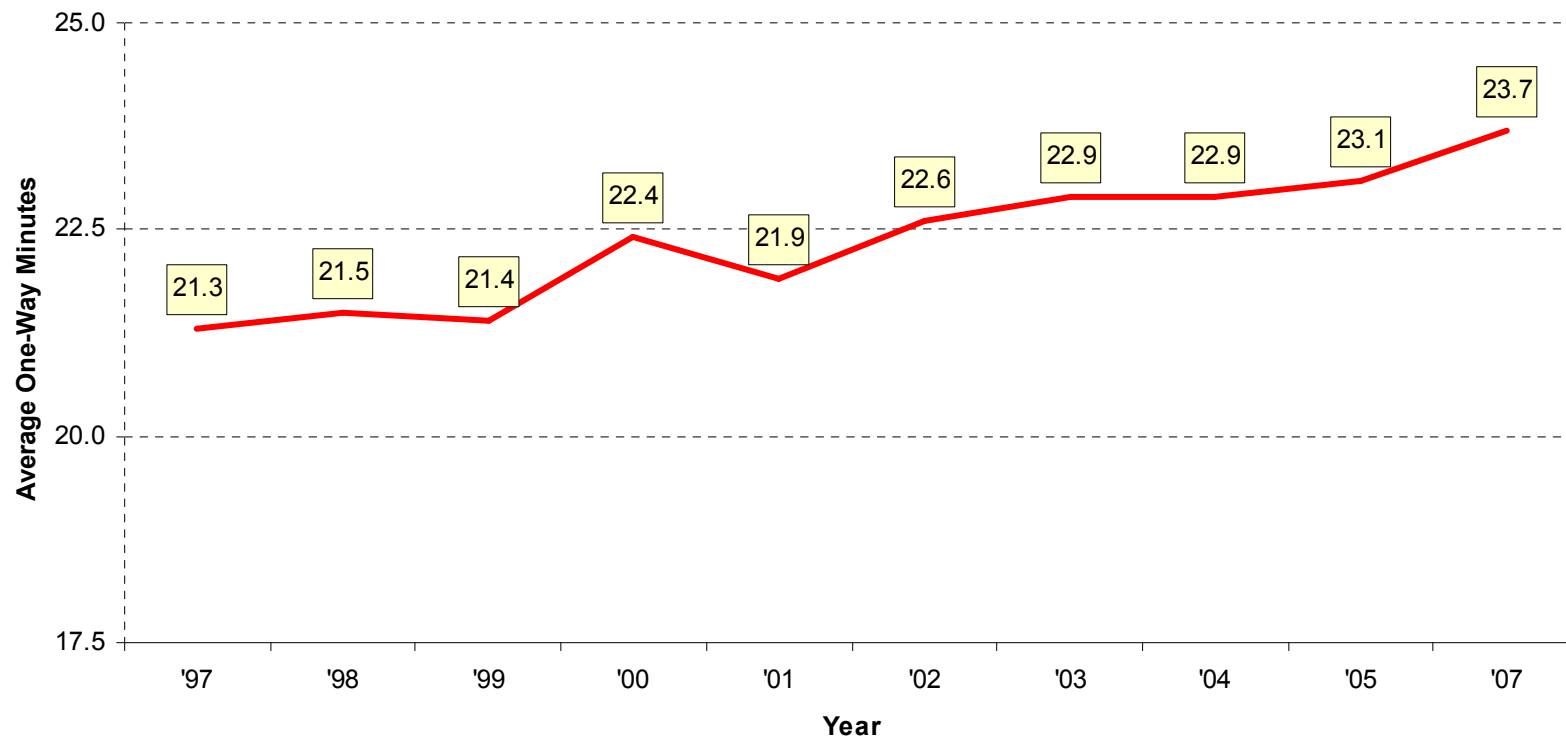
2000 Census Averages:

Pima County 23.9

United States 25.5

American Community Survey 2004:

National Avg 22.9



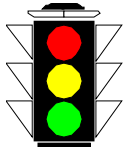
2005 Average One-Way Minutes: 23.1

Travel Reduction Program Regional Survey Results

	1989	2003	2004	2005	2007
# of Sites Surveyed	148	271	279	283	285
# of Employees	77,230	108,705	112,588	113,242	121,262
Survey Response Rate	68.5%	86.0%	86.6%	86.4%	82.6%
Alternate Mode Usage	17.6%	28.6%	29.2%	30.4%	28.8%
Vehicle Miles Traveled	47.3	58.1	57.1	57.4	53.8%
One-Way Miles	10.6	13.0	12.9	13.0	13.3%
One-Way Minutes	21.0*	22.9	22.9	23.1	23.7%
Sites Meeting Goal	N/A	35.4%	40.1%	46.3%	33%

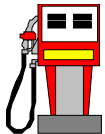
* Source 1990 Census

2007 TRP IMPACT SAVINGS



98.4 million driving miles

Using TRP survey response data



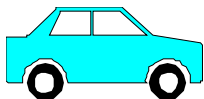
4.9 million gallons of gasoline

Using 20 miles per gallon (average vehicle)



31.4 million dollars

Using **48.5** cents per mile (IRS Standard Mileage Rate for 2007)



10.26 million pounds of pollution

Using 1 pound of pollution per **23** miles driven (EPA Model)