

Pima Association of Governments

177 N. Church Ave. Suite 405
Tucson, Arizona 85701
(520) 792-1093

CAGRDR Membership in Pima County, 2005

REPORT/PROJECT MEMO

Prepared by
Mead Mier, Pima Association of Governments Watershed Planning
for Julia Fonseca, Pima County Regional Flood Control District
July 2007

INTRODUCTION:

This memo includes a dataset with Central Arizona Groundwater Replenishment District (CAGRDR) maps, spreadsheets and shapefiles re-processed to include expanded membership data. This is a DRAFT update to the 2006 Pima Association of Governments (PAG) report by expanding the selection from Pima County to all of the Tucson Active Management Area (TAMA). The records remain current to the end of the year of 2005 for CAGRDR sources and 2004 for Arizona Department of Water Resources (ADWR) sources. The 2006 data will likely be available in Aug. 2007 and this memo can be updated at that time. In this memo, PAG has provided merged information for both CAGRDR subdivisions and CAGRDR service areas of the water providers from Pima County, ADWR and CAGRDR sources. This memo explains the background, purpose, methodology, findings, sources, limits, and credits for the included deliverables.

BACKGROUND:

Under the 1995 Assured Water Supply (AWS) Rules, new developments must show an assured water supply within the TAMA. If a development does not have sufficient groundwater supplies or other renewable supplies, it can voluntarily join the CAGRDR to gain a means to a Certificate of 100 Year Assured Water Supply from the ADWR. A water provider, similarly, can apply for a Designation of 100 Year Assured Water Supply. The CAGRDR is operated by the Central Arizona Water Conservation District (CAWCD), which also oversees the Central Arizona Project (CAP Canal). There are two types of CAGRDR membership: Member Service Areas (water providers) and Member Lands (subdivisions). The subdivisions meet the terms of membership by paying the CAGRDR to recharge within the AMA an allocated amount proportional to the amount of groundwater withdrawal that is over their groundwater allowance. The entire allocated amount is not necessarily being used at these sites.

If a subdivision will be served water from a water provider who is designated, the subdivision does not need a Certificate of Assured Water Supply. Frequently, water providers who do not have Designations of Assured Water Supply have a Physical Availability Determination (PAD) for their water service areas. A PAD evaluates an area solely for the physical availability of water and can lead to a designation or certificate of AWS in the future.

The Certificate of Assured Water Supply is valid only for the plat that was reviewed with a subdivision's application. The boundaries of the subdivision also define the CAGR D Member Land, and once enrolled, the boundaries of the Member Land cannot be modified without approval by the CAGR D. In contrast, when a city, town or water company joins the CAGR D Service Area Membership, it executes an agreement that irrevocably declares its service area *and* all extensions thereof to be in the CAGR D.

PURPOSE:

Pima County Regional Flood Control District (PCR FCD) requested that PAG create a dataset including a shapefile, a spreadsheet, and maps to document subdivisions and water providers in Pima County that have received membership status from CAGR D in the TAMA. The deliverables are listed in Table 1. PAG merged data, including location and documentation information for CAGR D subdivision Member Lands from Maricopa Association of Governments (MAG) and Pima County sources. The intention is to provide Pima County managers and the public with more information on Assured Water Supply and to display this dataset on the Pima County MapGuide website (<http://www.dot.co.pima.az.us/gis/maps/mapguide/mgmap.cfm?path=/gis/maps/mapguide/dotmap65.mwf&scriptpath=mgmapinitnullAPI.inc>). Key attribute fields provided by each record source serve as links to additional information available for the subdivisions. Key fields and web links are listed in Table 2. Table 2 also lists all files and each data field supplied by each data source.

METHODOLOGY:

This project consisted of obtaining records available from public agencies and using ArcGIS to create new shapefiles with data merged from the obtained information. The record sources and their contributed data are listed in Tables 2 and 3 respectively. All data from each source pertained to subdivisions or water service providers that PAG limited to TAMA boundaries. From the merged source information, PAG created new datasets, maps, and tables. These are listed in Table 1. Not all polygons received attribute data due to variation in source information. This was the case for subdivisions that have not yet been plotted by Pima County or CAGR D at this time and for water providers not yet plotted at ADWR.

Member Lands:

GIS contacts at CAGR D referred PAG to MAG as they had been contracted for GIS work on Member Lands in the past. MAG, CAGR D and CAP have allowed PAG to use their Member Land data with the provision that the contents do not necessarily reflect the official views or policies of MAG and have not been approved of or endorsed by MAG. PAG used CAP and CAGR D data as a basis for location and boundaries of the Member Lands.

Records from various sources were merged and linked as part of this project. Merging Pima County and CAP records required a manual matching process. This is due to differing boundaries and the use of different naming conventions of the subdivisions by Pima County and CAP. These datasets were merged in the 2006 CAGR D Report by PAG. Table 4 consists of a shortened version of the merged CAGR D subdivision Member Land attribute table for viewing within this report. The full dataset consists of 32 fields of data contained within the shapefile 'TgrdML05'.

The metadata file (TgrdML05.xml) has additional details on the processing of the GIS datasets that resulted in attributes for the CAGR Member Land shapefile.

In response to Pima County's request, the attributes of the merged dataset follow the format required to be served on MapGuide: fewer than 10 characters per field title, no spaces in field titles of shapefile name, a maximum 8 character shapefile name, and no visually evident overlapping polygons (though topology checks were not run). The fields that will be included in MapGuide are: MEMBER_LAN (CAGR subdivision name), CAGR__(CAGR Member Land number), SUB_NAME (Pima County subdivision name), BOOK_PAGE (Plat book and page number), and CERTIFICAT (ADWR certificate number). Links may be provided from this MapGuide to CAGR and Pima County Web sites that house databases for the subdivisions as shown on Table 2.

The list of non-CAGR subdivisions (Table 5) was created by using ArcMap to remove any subdivisions that were contained entirely by the locations of CAGR Member Lands or by CAGR Member Service Areas from the Pima County subdivisions shapefile. Table 6 consists of those non-CAGR subdivisions that are either conditionally or permanently protected and therefore not developed or developable.

Member Service Areas:

Member Service area data was provided by Pima County and ADWR. The ADWR data currently available was last updated in 2004 and is missing newer or expanded areas. Although updated ADWR data will be used in the final memo, for this current memo PAG used the Pima County water service dataset. Pima County has provided service area data that has been updated to reflect the 660 foot buffer around water provider transmission mains to determine service areas. The Pima County data also includes southern Pinal County. PAG limited the areas in the new merged shapefile to only include CAGR Member Service Areas by matching names listed in CAGR documentation (see Table 7). Table 8 consists of water service areas within TAMA that are not covered by CAGR membership.

Pima County has provided the following metadata regarding their water provider data:

A water provider may be a private company, a municipal utility, or an entity financed by a special taxing district. Each year, water providers in Active Management Areas are required to provide ADWR with a description of their service area boundaries. ADWR can ask the provider to update these boundaries. ADWR has begun replacing older boundary definitions with new boundaries that reflect a 660 foot buffer around a water provider's network of transmission mains. Some providers perform the 660 foot buffer themselves, while others leave this step to ADWR. The 660 foot buffer is a critical distinction used to determine whether a well is inside or outside a service area.

FINDINGS:

As of December 2005, 101 CAGR Member Lands were located in the TAMA (Figure 1). There was a small error of this total number in the 2006 PAG report due to the duplicate areas that have now been cleaned from the dataset. Figure 1 displays these Member Lands in blue alongside Member Service Areas in a map of the TAMA area. Attributes for Member Lands are listed in Table 4 including key identification fields and some of the primary descriptive fields listing information such as subdivision size, the year the member joined CAGR, groundwater allowances, replenishment obligations, and water used per Member Land. In addition, several more attributes are associated with the CAGR Member Lands dataset; these fields are defined on Table 3.

Although the GIS data used for this report are only current to the end of the year of 2005, some information not currently linked to GIS is provided on the CAGR D Web site about the current status of CAGR D membership. According to CAGR D, as of May 10, 2007, there are 126 Member Lands including new and pending members. These Member Lands consist of 26,121 planned and current homes in the TAMA. There were 15 new Member Lands in 2005 and 16 new in 2006. These years are higher than average for new memberships.

As of the end of 2005, the CAGR D Member Lands ranged greatly in size from .64 to 980.98 acres, but averaged on the smaller end of the scale (approximately 100 acres). The largest Member Lands are primarily in the Sahuarita jurisdiction in Pima County. The earliest year members joined CAGR D in Pima County was 1995. Averages of 11 subdivisions join CAGR D each year. The majority of members lie in the Sahuarita and Green Valley areas, which is a trend that continued with new members in 2005. Seventy-five percent of Member Lands lie outside the metropolitan areas.

By expanding the extent of the dataset from Pima County to all of the TAMA, there are 10 more Member Lands added to the dataset in 2005 that all reside in Pinal County. They are:

- Copper Hill Estates 001-35-0616
- Coronado Reserve Lots 1-260 001-35-0794
- Coronado Ridge 001-35-0087
- Desert Living Estates 170-35-0691
- Eagle Crest Ranch 047-35-0354
- SaddleBrooke Ranch 001-35-0294
- SaddleBrooke Unit 21 009-35-0383
- SaddleBrooke Unit 51 009-35-0819
- SaddleBrooke Units 42-45 051-35-0393
- SaddleBrooke Units 46-50 009-35-0410

The Pinal County Member Lands do not have the additional subdivision data that are available for Pima County subdivisions such as plat number references. Two Member Lands in Pima County did not have plat information with the County and remain un-platted in 2007. These subdivisions are:

- Canoa Preserve 005-36-0846
- Rancho Del Rio Estates, Lots 024-36-0690

A total of 482 non-CAGR D-member subdivisions of Pima County in 2005 are shown in brown on the map in Figure 1 and are listed in Table 8. The non-CAGR D subdivision boundaries are not available for areas outside of Pima County. The list in Table 8 consists of those subdivisions that are either completely or only partially lie within CAGR D membership areas including Member Lands and planning areas of Member Service areas. The list of non-CAGR D subdivisions is reduced to 308 subdivisions when counting only subdivisions entirely outside boundaries of CAGR D members, which may help account for recording differences between Pima County subdivision plat records, ADWR service area planning boundaries, and CAGR D boundary records. According to CAGR D documentation, subdivisions that have changed their boundaries must re-register with CAGR D or may be covered by expanding Member Service areas. Fifty-one of the entirely non-CAGR D subdivisions were recorded since 1995 when AWS rules were established (for the at-least-partially-outs this is 120 of the 482). By requirement of AWS Rules, these subdivisions should have been found to have Assured Water Supplies without the means of CAGR D. Non-CAGR D subdivisions use groundwater with no CAGR D allocation or obligation. Of the non-CAGR D subdivisions, 16 are either conditionally or permanently

protected from development by designation of open space, preserve, park, etc. (Table 6). These protected subdivision lands are excluded from the subdivisions featured in the map (Figure 1).

There are currently nine Member Service Areas in the TAMA with one residing in Pinal County and the rest in Pima County. Table 7 lists each Member Service Area with its membership date current to May 2007. Special areas of interest in 2007 are the Metro West (Pima County) and Willow Springs (Pinal County) water providers who are new Member Service Areas to CAGRD since 2005. These areas will be featured in the next update of this report. The 39 water service areas within the TAMA that are not CAGRD members are symbolized in a stripe overlay and listed in Table 8. In addition, these water providers do not have AWS designation. Water providers may choose to obtain a Designation of Assured Water Supply in order to facilitate development in their area, but are not required to by ADWR.

TABLE 1: PAG ENCLOSURES/ DELIVERABLES

Digital files are available for most datasets shown in report as well as for additional deliverables.

File Description	Report Figure / Table Number	Name of File
A map of CAGR D Water providers (i.e. Member Service Areas) and CAGR D subdivisions (i.e. Member Lands) in the Tucson Active Management Area (TAMA). This map includes subdivisions that lie outside of CAGR D membership areas in Pima County.	Figure 1	TAMA-GRD-05_draft-06-2007.pdf
The shapefile including data sources and table of CAGR D subdivision Member Lands' data. Extent of the file is the TAMA.	Table 2 (data sources), Table 3 (attributes of data table), Table 4 (short version of data table)	TgrdML05 (GIS shapefile formatted for Map Guide including metadata and attribute data for the subdivisions)
Non- Member Pima County Subdivisions in 2005, protected lands excluded	Table 5	pcsbdv05nonGRDdev (GIS shapefile with attributes)
Non-CAGR D Subdivisions in Pima County protected from development	Table 6	NA
CAGR D Member Service Areas in TAMA	Table 7 (lists MSAs as of 2007)	TAMAcagr dMSA05 (GIS shapefile with attributes displays boundaries of MSAs as of 2005)
Non- CAGR D Member Water Service Areas in TAMA in 2007	Table 8	TAMA05_SAs_pclis_nonGRD (GIS shapefile with attributes)

FIGURE 1: MAP OF TAMA CAGRD MEMBERS AS OF 2005. (ALSO AVAILABLE IN LARGER FORMAT.)

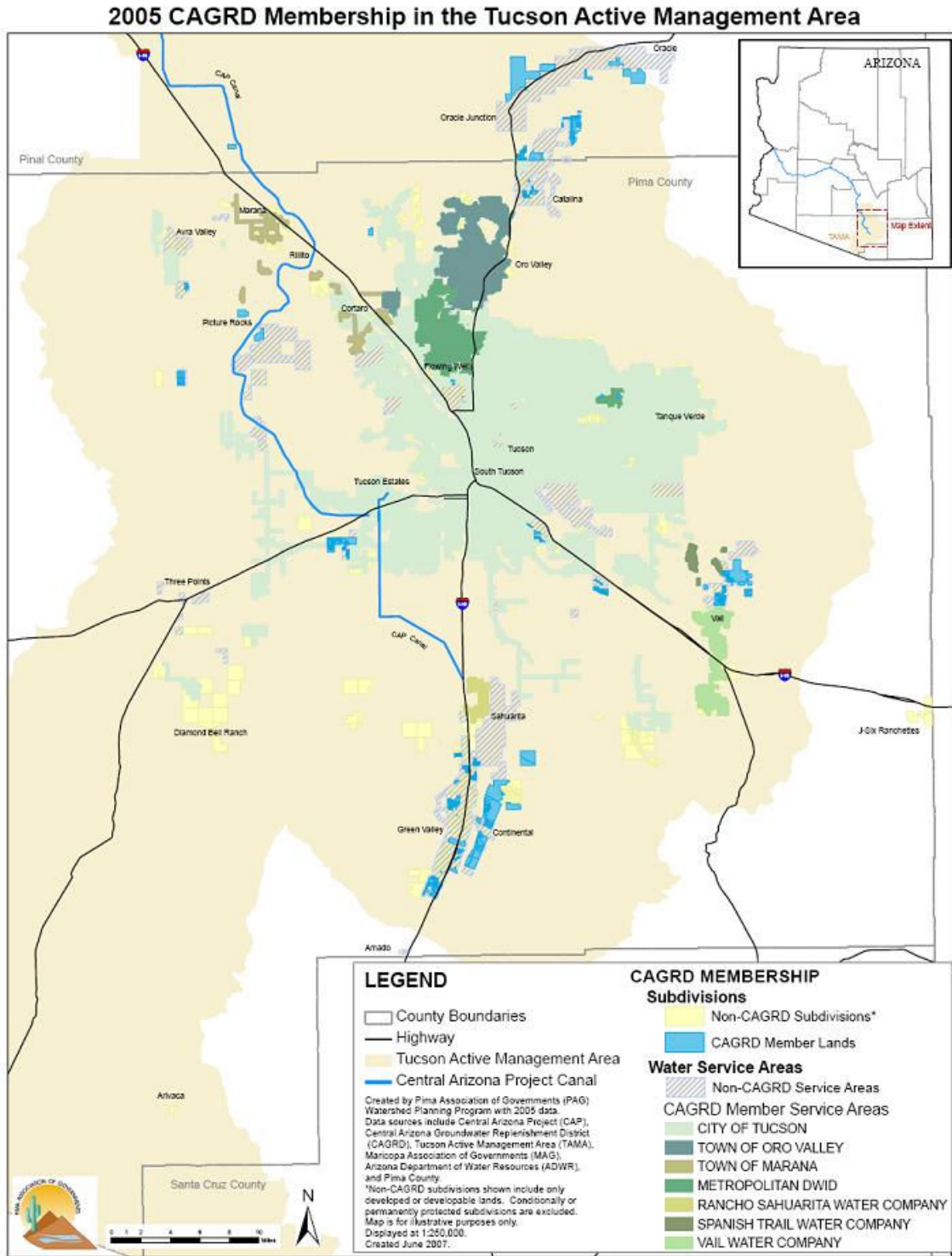


TABLE 2: DATA SOURCES

Subdivisions and Member Lands:

File	Source	Contact	Currentness Reference	Attributes Provided	Key Fields (if applicable)	Link
TAMA_ML.shp, PAG_TAM A_MLs.xls	Central Arizona Project (CAP), via Maricopa Association of Governments (MAG)	Maricopa Association of Governments, sent by Don Worley (MAG) with approval of Terri Sue Rossi (CAP) and Rita Walton (MAG). Coordinated by Cliff Neal (CAGRD)	Up to data as of Dec 2005, sent to PAG on 6/1/07	Location information, Member Land number, CAGRD number, Member Land name, GIS calculated acres, water provider, division name, Active Management Area, County, total lots, year member joined, Member Land Assured Water Supply gallons per housing unit per day, original groundwater allowance allotted previous land use	Member Land, Subdivision Name, Number, and CAGRD #	http://www.ecagrd.com/MemberShip/ind ex.cfm?action=search
NA	Central Arizona Groundwater Replenishment District (CAGRD), a part of CAP	Requested to Cliff Neil and sent by Candi Cox, CAGRD contacts – or Don Worley (MAG)	waiting	replenishment obligation 2006, AWS certificate#	Certificate number	ADWR
subdiv.shp, subdiv.dbf	Pima County	John Regan (Pima County Department of Transportation GIS division) http://www.dot.pima.gov/gis/ftp/overview.cfm	5/23/2007 downloaded from Pima County FTP site (PCDSD updated on 5/18/2007)	Location of non-member subdivision lands in Pima County, date recorded plat for subdivision, parcel lot count, jurisdiction, subdivision plat book and page (merged number), subdivision name, GIS calculated area, GIS calculated perimeter	PC subdivision naming conventions, Plat Book and Page Number	http://www.pimaxpress.com/subdivplans/SDFolder.htm
NA	Pinal County	Steve Frazier (GIS Manager)	waiting	Location of non-member subdivision land in Pinal County	Subdivision Name	Pinal County

Water Service Areas:

File	Source	Contact	Currentness Reference	Attributes Provided	Key Fields (if applicable)	Link
MSA Enrollment History.pdf	Central Arizona Groundwater Replenishment District (CAGRD) Web site	http://www.cagrd.com/	Released February 2007	List of CAGRD Member Water Providers in the Tucson Active Management Area	NA	NA
Watercos.shp, watercos.dbf	Pima County	John Regan (Pima County Department of Transportation GIS division) http://www.dot.pima.gov/gis/ftp/overview.cfm . Originated from Mike List and Sue Smith (ADWR)	Boundaries of service areas as of 2005 updated on 3/12/2007 by ADWR, downloaded from PC on 6/19/2007	Water provider location with 600 ft legal buffers within Pima County and southern Pinal County, Designated Service Providers marked as Yes, Certificate #, Water Company, Assured	Assured Water Supply Certificate Number	ADWR
Proserv.shp, proserv.dbf	Arizona Department of Water Resources (ADWR)	-ADWR Bookstore on-line : Arizona Water Providers CD -- http://www.water.arizona.gov/ecscripts/ecware.exe/catalog?id=001&category=All&type=A1QNI1 -Robert Chavez, ADWR GIS	Ordered CD June 2007, Up to data as of 2004. Waiting for updated version from Robert Chavez	* Municipal Water Providers boundaries within TAMA or AZ Waiting for Water provider attributes for Metropolitan DWID – West and Willow Springs Utilities that have joined CAGRD since 2005.	Assured Water Supply Certificate Number	ADWR

*Also consulting CAGRD and Pinal County for water provider areas within TAMA updated since 2005.

TABLE 3: ATTRIBUTES OF THE SUBDIVISION CAGRD MEMBER LANDS IN THE TAMA 2005 DATASET, ASSEMBLED BY PIMA ASSOCIATION OF GOVERNMENTS

<u>Attribute Name</u>	<u>Meaning</u>
2005_OBLIG	2005 Replenishment Obligation in acre feet per year - Sum of Obligation - Amount over groundwater allowance set by AWS rules
ACRES	Total acres in subdivision Member Land
ACRES_FROM	Acres calculated from GIS
AMA_	Active Management Area
AREA	Area of polygon
BLOCK_COUNT	Block Count
BND_SOURCE	BND Source - GIS figure
BOOK	Plat Book numbers of a recorded subdivision plat
BOOK_PAGE	Book and page numbers of a recorded subdivision plat
CAGRD__	Central Arizona Groundwater Replenishment District Member Land Number
CERTIFICAT	Certificate number of Assured Water Supply
COUNTY	County name
DIVISION_N	Division Name - Satellites
JURISDICT	Jurisdiction Name
MEMBER_DAT	Date Member joined CAGRD
MEMBER_LAN	Member Land Name (ie CAGRD Subdivisions in Pima County)
MEMBER_YEA	Year Member joined CAGRD
ML_AWS_GPH	Member Land Assured Water Supply gallons per housing unit per day, current use
ML_NO	Member Land Number
ORIGINAL_G	Original groundwater allowance (i.e. allocation) in acre feet per year
PAGE	Plat Page numbers of a recorded subdivision plat
PERIMETER	Perimeter length of polygon
PREV__LAND	Previous land use
REC_DATE	Date subdivision plat was recorded
RPRTING_YR	CAGRD Reporting Year for Obligation and GPH
Shape_Area	Area of feature - automatically generated
Shape_Leng	Length of feature - automatically generated
SUB_NAME	Subdivision name - Pima County naming conventions
SUBIDX	Subdivision Identification Code
TOTAL_LOTS	Total number of parcel lots - Lot Count
WATER_PR_1	Water Provider Name

TABLE 4: ATTRIBUTES OF THE 2005 CAGRD SUBDIVISION MEMBER LANDS IN THE TAMA

*Additional attributes associated with this data did not fit in the chart. Please see digital file for full dataset (TAMAcagrdrdML06.xls)

Member Land	CAGRD ID	Date Member Joined	2005 Obligation	Original Groundwater Allowance	AWS GPH	AWS Certificate ID	Water Provider	Pre-vious Land Use	County	GIS Acres	Total Lots	Juris-diction	Date Plat Recorded	Plat Book	Plat Page
A Resubdivision of Block B of	007-36-0774	6/17/2005	0	251	331	27-401602	Community Water Company o	NA	Pima	25	84	SAH	10/28/2005	60	042
Avra Vista, Lots 1-64	053-36-0418	10/29/2003	0	212	370	27-401073	Marana Domestic Water Imp	NA	Pima	68	64	PIMA	04/14/2005	59	051
Black Horse	056-36-0453	9/9/2002	25	1227	331	27-400705	Los Cerros Water Company,	NA	Pima	190	414	PIMA	06/24/2003	57	036
Caddis Haley Estates Lots 1-1	046-36-0625	7/8/2004	0	445	308	27-401269	Diablo Village Water Comp	Non-Ag	Pima	32	161	PIMA	02/11/2005	59	033
Canoa Northwes t Lots 167-328,	013-36-0312	5/9/2000	11	645	238	27-400289	Green Valley Domestic Wat	Non-Ag	Pima	125	161	PIMA	07/19/2000	53	081
Canoa Northwes t, Lots 1-166	013-36-0256	10/18/1999	15	637	271	27-400144	Green Valley Domestic Wat	Non-Ag	Pima	81	140	PIMA	02/04/2000	53	024
Canoa Preserve	005-36-0846	9/1/2005	0	0	408	27-401781	Farmers Water Co.	Ag	Pima	333	84	NA	NA	NA	NA
Canoa Ranch Block 11	013-36-0509	11/12/2003	3	48	314	27-400896	Green Valley Domestic Wat	Ag	Pima	6	17	PIMA	05/20/2004	58	044
Canoa Ranch Block 21, Lots 1-	013-36-0503	3/28/2003	3	148	276	27-400875	Green Valley Domestic Wat	Ag	Pima	21	60	PIMA	04/30/2003	57	021

013-36-0526	12/17/2003	0	422	244	27-400935	Green Valley Domestic Wat	Non-Ag	Pima	62	193	PIMA	11/04/2004	59	004
013-36-0507	4/25/2003	3	310	345	27-400883	Green Valley Domestic Wat	Non-Ag	Pima	41	100	PIMA	11/05/2003	57	071
013-36-0734	4/8/2005	0	396	315	27-401564	Green Valley Domestic Wat	Ag	Pima	156	140	PIMA	05/23/2006	61	033
013-36-0603	6/9/2005	0	876	6521	27-401188	Green Valley Domestic Wat	Ag	Pima	47	15	PIMA	05/08/2001	54	074
027-36-0808	8/26/2005	0	456	356	27-401727	Ray Water Company	NA	Pima	25	143	COT	04/20/1995	47	004
010-36-0434	5/17/2002	1	97	540	27-400666	Metropolitan Domestic Wat	NA	Pima	32	20	PIMA	09/24/2002	56	037
005-36-0617	5/5/2004	0	190	424	27-401210	Farmers Water Co.	Ag	Pima	207	50	PIMA	03/24/2005	59	046
032-36-0128	12/31/1998	17	556	242	27-400488	Las Quintas Serenas Water	Non-Ag	Pima	47	137	SAH	05/01/1998	51	002
001-35-0616	8/3/2004	0	151	276	NA	Arizona Water Company	Non-Ag	Pinal	99	61	NA	NA	NA	NA
001-35-0794	6/15/2005	0	1038	478	NA	Arizona Water Company	NA	Pinal	730	242	NA	NA	NA	NA
001-35-0087	12/31/1997	0	261	259	NA	Arizona Water Company	Non-Ag	Pinal	153	60	NA	NA	NA	NA
037-36-0248	12/31/1999	8	2250	339	27-400095	Saguaro Water Company	Non-Ag	Pima	981	395	PIMA	03/31/2000	53	050

De Anza Links	005-36-0577	12/26/2003	1	69	350	27-401136	Farmers Water Co.	Ag	Pima	8	22	PIMA	02/26/2004	58	006
De Anza Links II, Lots 1-17 C	005-36-0860	12/14/2005	0	52	342	27-401810	Farmers Water Co.	Non-Ag	Pima	4	17	PIMA	03/01/2005	60	090
Desert Living Estates	170-35-0691	8/15/2005	0	163	303	NA	Desert Living Estates Hom	Non-Ag	Pinal	75	60	NA	NA	NA	NA
Desert Point Estates	027-36-0644	8/31/2004	0	234	328	27-401319	Ray Water Company	Non-Ag	Pima	18	76	COT	01/28/2005	59	030
Desert Vista Estates, Parcels	027-36-0126	10/21/1997	5	741	281	27-300361	Ray Water Company	Non-Ag	Pima	30	157	COT	09/23/1997	50	009
Desert Vista Terrace	027-36-0456	10/17/2002	15	577	352	27-400777	Ray Water Company	NA	Pima	33	183	COT	07/02/2003	57	042
Diablo Village Estates Lots 1	046-36-0775	7/20/2005	0	826	274	27-401606	Diablo Village Water Comp	NA	Pima	64	336	PIMA	12/31/1997	28	033
Diablo Village Estates Townho	046-36-0705	12/23/2004	0	147	278	27-401520	Diablo Village Water Comp	Non-Ag	Pima	6	59	PIMA	07/18/1998	32	096
Drexel Manor	027-36-0470	2/25/2003	3	563	458	27-400841	Ray Water Company	Non-Ag	Pima	18	137	COT	03/25/2004	58	021
Duval Commerce Park	007-36-0086	12/31/1997	1	608	2410	27-300244	Community Water Company o	Non-Ag	Pima	24	15	SAH	02/19/1999	52	002
Eagle Crest Ranch	047-35-0354	12/31/2001	0	4248	486	NA	Goodman Water Company	Non-Ag	Pinal	152	975	NA	NA	NA	NA
Eagle Point Estates	046-36-0431	2/7/2002	1	694	283	27-400664	Diablo Village Water Comp	NA	Pima	153	274	PIMA	05/29/2003	57	030
Estates at La Cañada Norte, L	032-36-0546	9/19/2003	2	103	280	27-401012	Las Quintas Serenas Water	Non-Ag	Pima	18	41	SAH	11/18/2003	57	082

Garden of Eden, Lots 1-18	009-36-0005	12/31/1995	3	101	332	27-300044	Lago Del Oro Water Compan	Non-Ag	Pima	20	18	PIMA	01/17/1996	48	002
Greens at Santa Rita Springs.	005-36-0063	1/29/1997	7	159	201	27-300233	Farmers Water Co.	Non-Ag	Pima	8	47	PIMA	03/31/1997	49	042
Greens at Santa Rita Springs.	005-36-0122	12/31/1997	1	33	215	27-300365	Farmers Water Co.	Non-Ag	Pima	3	9	PIMA	12/09/1997	50	067
Jacaranda Village at Tewa Trail	037-36-0602	5/5/2004	0	102	317	27-401179	Saguaro Water Company	Non-Ag	Pima	40	36	PIMA	02/10/2005	59	032
La Joya Verde II	007-36-0099	12/31/1997	4	460	261	27-300311	Community Water Company o	Non-Ag	Pima	20	105	SAH	10/20/1997	50	035
La Joya Verde III, Lots 1-226	007-36-0508	6/4/2003	14	922	455	27-400885	Community Water Company o	Ag	Pima	48	226	SAH	11/13/2003	57	079
La Posada II	005-36-0341	12/31/2001	6	709	275	27-400365	Farmers Water Co.	Ag	Pima	64	288	PIMA	03/14/2001	54	056
Las Campanas Block B, Lots 1-1-	007-36-0661	9/10/2004	0	336	318	27-401398	Community Water Company o	Non-Ag	Pima	20	118	PIMA	04/28/2005	59	061
Las Campanas Block F, Lots 1-	007-36-0382	6/17/2002	7	216	259	27-400455	Community Water Company o	Non-Ag	Pima	27	93	PIMA	12/17/2002	56	068
Las Campanas Block H, Lots 1-	007-36-0268	12/31/1999	7	328	233	27-400186	Community Water Company o	Non-Ag	Pima	27	84	PIMA	04/18/2000	53	055
Las Campanas Block L, Lots 1-	007-36-0643	8/17/2004	1	181	302	27-401317	Community Water Company o	Non-Ag	Pima	19	67	PIMA	04/19/2005	59	054

Las Campanas Blocks D & E	007-36-0866	12/5/2005	0	626	260	27-401825	Community Water Company o	Non-Ag	Pima	67	268	PIMA	07/05/2006	61	037
Las Campanas Village, Block M	007-36-0349	12/31/2000	20	454	239	27-400376	Community Water Company o	Non-Ag	Pima	36	219	PIMA	05/18/2001	54	081
Las Campanas, Block G	007-36-0024	12/31/1996	7	324	203	27-300098	Community Water Company o	Non-Ag	Pima	22	95	PIMA	07/23/1996	48	063
Las Campanas, Block G-2	007-36-0118	12/31/1997	8	483	238	27-300346	Community Water Company o	Non-Ag	Pima	30	121	PIMA	06/25/1998	51	019
Las Campanas, Block K	007-36-0013	12/31/1996	7	362	191	27-300082	Community Water Company o	Non-Ag	Pima	21	113	PIMA	07/23/1996	48	064
Links at Santa Rita Springs	005-36-0080	12/31/1997	9	258	164	27-300266	Farmers Water Co.	Non-Ag	Pima	29	94	PIMA	12/09/1997	50	070
Los Arroyos Del Este	007-36-0468	1/13/2003	17	1587	352	27-400808	Community Water Company o	Ag	Pima	107	503	SAH	01/04/2004	57	095
Madera Foothills Estates, Lot	005-36-0023	12/31/1996	3	110	261	27-300116	Farmers Water Co.	Non-Ag	Pima	109	25	PIMA	12/02/1996	49	001
Madera Foothills Estates, Lot	005-36-0384	4/18/2001	1	104	276	27-400456	Farmers Water Co.	Non-Ag	Pima	174	42	PIMA	08/03/2001	54	097
Madera Highlands, Villages 11	005-36-0783	4/15/2005	0	3700	674	27-401612	Farmers Water Co.	Ag	Pima	921	617	SAH	05/09/2005	59	065

Madera Reserve, Lots 131-263	005-36-0028	7/30/1996	12	692	259	27-300142	Farmers Water Co.	Non-Ag	Pima	204	159	PIMA	10/25/1996	48	086
Mountain Cove Estates, Lots 1	010-36-0004	8/25/1995	7	87	288	27-300016	Metropolitan Domestic Water	Non-Ag	Pima	21	18	PIMA	11/21/1995	47	079
Mountain Creek Ranch	039-36-0282	12/31/2000	1	1155	1074	27-400201	Rincon Water Company	Non-Ag	Pima	159	64	PIMA	07/18/2000	54	093
Parcel E at Santa Rita Spring	005-36-0258	12/31/1999	3	195	332	27-400148	Farmers Water Co.	Ag	Pima	10	35	PIMA	01/27/2000	53	023
Pasadera	005-36-0350	12/31/2000	3	72	277	27-400380	Farmers Water Co.	Non-Ag	Pima	143	29	PIMA	03/20/2000	54	059
Paseo Tierra Townhomes	007-36-0252	10/7/1999	0	70	232	27-400131	Community Water Company	Non-Ag	Pima	2	18	PIMA	01/06/2000	53	011
Presidio at Santa Rita Spring	005-36-0143	5/27/1998	15	899	212	27-300424	Farmers Water Co.	Ag	Pima	57	252	PIMA	10/14/1998	51	051
Quail Creek Phase II	054-36-0447	8/22/2002	0	8142	604	27-400699	Quail Creek Water Company	NA	Pima	822	1504	SAH	09/05/2000	57	054
Rancho Del Rio Estates, Lots	024-36-0690	12/3/2004	0	683	412	27-401500	Avra Water Co-op	NA	Pima	217	185	NA	NA	NA	NA
Rancho Loma Alta	037-36-0573	12/26/2003	0	66	309	27-401121	Saguaro Water Company	Non-Ag	Pima	23	24	PIMA	09/21/2000	58	090
Rincon Trails	037-36-0394	10/11/2001	24	2593	573	27-400492	Saguaro Water Company	Non-Ag	Pima	382	505	PIMA	10/10/2000	56	044
Roger Square Townhomes	031-36-0127	12/26/1997	1	27	158	27-300366	Flowing Wells Irrigation	Non-Ag	Pima	1	10	COT	05/14/1997	49	056

SaddleBrook Ranch	001-35-0294	8/28/2000	0	23934	422	NA	Arizona Water Company	Non-Ag	Pinal	1241	5619	NA	NA	NA
SaddleBrook Unit 21	009-35-0383	4/13/2001	0	798	414	NA	Lago Del Oro Water Compan	Non-Ag	Pinal	157	215	NA	NA	NA
SaddleBrook Unit 51	009-35-0819	7/25/2005	0	229	3646	NA	Lago Del Oro Water Compan	Non-Ag	Pinal	10	7	NA	NA	NA
SaddleBrook Units 42-45	051-35-0393	4/26/2001	0	5062	1076	NA	Ridgeview Utility Company	Non-Ag	Pinal	249	525	NA	NA	NA
SaddleBrook Units 46-50	009-35-0410	10/1/2001	0	2016	279	NA	Lago Del Oro Water Compan	NA	Pinal	41	770	NA	NA	NA
Sagewood	031-36-0330	8/30/2000	4	291	298	27-400348	Flowing Wells Irrigation	Non-Ag	Pima	13	58	PIMA	02/21/2001	047
Sahuarita Highlands	005-36-0604	10/12/2004	0	416	303	27-401190	Farmers Water Co.	Non-Ag	Pima	646	153	PIMA	06/14/2005	090
San Ignacio Heights Resub	013-36-0083	5/22/1997	1	36	192	27-300275	Green Valley Domestic Wat	Non-Ag	Pima	5	11	PIMA	08/21/1997	088
San Ignacio Villas	013-36-0044	11/15/1996	2	125	168	27-300181	Green Valley Domestic Wat	Non-Ag	Pima	8	44	PIMA	12/23/1996	012
San Ignacio Vistas II, Lots 1	013-36-0085	6/3/1997	6	297	245	27-300279	Green Valley Domestic Wat	Non-Ag	Pima	25	72	PIMA	12/22/1995	091
San Ignacio Vistas II, Lots 7	013-36-0049	11/15/1996	2	89	165	27-300192	Green Valley Domestic Wat	Non-Ag	Pima	6	32	PIMA	12/23/1996	013
San Ignacio Vistas II, Phase	013-36-0117	9/25/1997	10	539	247	27-300347	Green Valley Domestic Wat	Non-Ag	Pima	52	130	PIMA	05/29/1998	009

007-36-0343	10/19/2000	11	1065	336	27-400369	Community Water Company	Non-Ag	Pima	116	354	SAH	02/08/2001	55	008
031-36-0862	10/13/2005	0	263	1834	27-401639	Flowing Wells Irrigation	NA	Pima	16	16	PIMA	09/21/1998	51	047
027-36-0078	5/19/1997	4	242	359	27-300163	Ray Water Company	Non-Ag	Pima	10	40	COT	06/12/2000	53	066
013-36-0776	2/11/2005	0	213	294	27-401607	Green Valley Domestic Wat	Ag	Pima	138	81	PIMA	05/19/2005	59	075
046-36-0530	11/17/2003	4	536	286	27-400971	Diablo Village Water Comp	Non-Ag	Pima	127	209	PIMA	12/24/2003	57	091
046-36-0710	1/13/2005	0	1717	335	27-401525	Diablo Village Water Comp	NA	Pima	158	572	PIMA	11/14/2005	60	047
046-36-0537	11/17/2003	2	289	293	27-400994	Diablo Village Water Comp	Non-Ag	Pima	24	110	PIMA	12/24/2003	57	090
037-36-0505	4/24/2003	2	541	499	27-400871	Saguaro Water Company	Non-Ag	Pima	48	121	PIMA	06/14/2004	58	053
005-36-0113	10/21/1997	6	420	219	27-300344	Farmers Water Co.	Non-Ag	Pima	54	114	PIMA	12/09/1997	50	068
054-36-0673	11/5/2004	3	672	339	27-401424	Quail Creek Water Company	Non-Ag	Pima	74	230	SAH	03/03/2005	59	038
019-36-0671	10/27/2004	0	2576	392	27-401414	Voyager Water Company	Non-Ag	Pima	229	733	TUC	06/13/2005	59	081
037-36-0605	7/14/2004	0	321	311	27-401189	Saguaro Water Company	Non-Ag	Pima	169	115	PIMA	03/16/2005	59	042

TABLE 5: PIMA COUNTY SUBDIVISIONS WITHIN THE TUCSON ACTIVE MANAGEMENT AREA THAT DO NOT LIE ENTIRELY WITHIN CAGR D BOUNDARIES IN 2005 (NEITHER WITHIN SUBDIVISION MEMBER LANDS NOR MEMBER PROVIDERS SERVICE PLANNING AREAS)

Subdivision Name	Plat Book & Page	Jurisdiction	Lot Count	Block Count	Rec. Date
ALDEA DE PASCUA (1-11)	28081	PIMA	11	0	8/11/1977
ALLIED INDUSTRIAL ACRES (1-6)	18059	PIMA	6	0	11/30/1965
ALVERNON RAIL CENTER (1-24)	33012	PIMA	24	0	9/16/1980
ANNAJO ESTATES (1-10)	14094	PIMA	10	0	6/30/1960
ANTLER CREST ESTATES (1-145)	47067	PIMA	145	0	9/27/1995
ARIVACA	6069	PIMA	300	0	5/9/1949
AVRA FOOTHILLS ESTATES (1-16)	18031	PIMA	16	0	4/8/1985
AVRA RANCHETTES (132-169)	23065	PIMA	37	0	8/10/1972
AVRA RANCHETTES (1-67)	20049	PIMA	67	0	2/4/1970
AVRA RANCHETTES (170-207)	25034	PIMA	37	0	7/12/1973
AVRA RANCHETTES (68-131)	21056	PIMA	59	0	4/8/1971
BERRY ACRES (1-18)	17022	MAR	18	0	11/8/1963
BROOKLYN HEIGHTS - SOUTH SIDE UNIVERSITY ADDITION	1011	COT	1	4	3/13/1900
BROOKWOOD (1-36)	43049	PIMA	36	0	4/27/1990
BUELLS ADDITION, BLKS 13, 14, 15 RESUB.	4004	COT	1	3	6/9/1922
BUENA TIERRA (1-37)	17064	PIMA	37	0	4/9/1964
BUENA VENTURA	13072	PIMA	81	0	3/20/1959
BULLHEAD PROPERTIES (1-3)	44020	SAH	3	0	12/29/1991
CANOA CANYON ESTATES (1-22)	39007	PIMA	22	0	8/14/1985
CANOA ESTATES (1-142)	38006	PIMA	142	0	10/15/1984
CANOA ESTATES II (1-125)	39091	PIMA	125	0	7/16/1986
CANOA HILLS TOWNHOMES (65-143)	41056	PIMA	78	0	9/4/1987
CANOA RANCH BLKS. 1-45	54074	PIMA	0	45	5/8/2001
CANOA RIDGE (1-128)	39012	PIMA	128	0	9/26/1985
CANOA SECA ESTATES (1-170)	42038	PIMA	170	0	8/5/1988
CANOA SECA ESTATES (158-170)	43004	PIMA	13	0	7/11/1989
CANOA SECA ESTATES II (1-133)	43019	PIMA	133	0	10/9/1989
CANOA SECA ESTATES RESUBDIVISION (25-70, 79-94)	43055	PIMA	61	0	6/6/1990
CANOA VISTAS II (1-46)	43008	PIMA	46	0	8/2/1989
CANTERBURY RANCH (1-136)	58031	COT	136	0	4/18/2004

CANYON PASS AT DOVE MOUNTAIN (182-227)	54041	MAR	45	0	1/19/2001
CANYON PASS IV-B AT DOVE MOUNTAIN (228-279)	59006	MAR	52	0	11/5/2004
CANYON RANCH BLOCK A	41045	PIMA	0	1	8/5/1987
CANYON RANCH ESTATES RESUB. (1-41)	43054	PIMA	41	0	5/17/1990
CASA PRIMAVERA(1-242)	37061	PIMA	242	0	7/10/1984
CASITAS DEL VALLE II (1-34)	43052	PIMA	34	0	5/14/1990
CASITAS DEL VALLE II (1-69)	34010	PIMA	69	0	4/21/1981
CASITAS DEL VALLE TOWNHOUSES II (1-110)	31020	PIMA	110	0	7/23/1979
CHAPARRAL ACRES (1-16)	22096	PIMA	16	0	4/11/1972
CHAPARRAL ESTATES NO. 1 (1-49)	22020	PIMA	49	0	9/29/1971
CHAPARRAL ESTATES NO. 2 (1-58)	22062	PIMA	58	0	1/24/1972
CIELITO LINDO	15080	PIMA	103	0	5/5/1961
CIELITO LINDO RESUB(105,107&109-114)	20061	PIMA	12	0	3/27/1970
CIVANO II BLKS 1-2 (1-192)	58092	COT	192	2	10/1/2004
CIVANO II BLOCK 2 (193-227)	60052	COT	34	0	12/9/2005
CIVANO: MASTER BLOCK PLAT (BLK. 79-82)	50036	COT	0	3	10/22/1997
CLARA VISTA DEL VALLE(1-21)	29018	PIMA	21	0	1/20/1978
CLARK'S VISTA DE LAS MONTANAS	8072	MAR	25	0	3/16/1948
COLONIA DE LOS ALAMOS	34051	PIMA	132	0	8/7/1981
COLONIA DE LOS ALAMOS(BK1-45)	26009	PIMA	45	0	3/15/1974
COLONIAS LA CANADA (1-82)	45045	SAH	82	0	11/17/1993
CONSOLIDATE OIL DEVELOPMENT CO. SUBD. A	3079	COT	1	0	6/7/1919
CONTINENTAL RANCH RETAIL CENTER (1-13)	60075	MAR	13	3	10/10/2005
CONTINENTAL VISTAS(1-302)	26092	PIMA	302	0	11/22/1974
CORAZON DEL PUEBLO (1-393)	59079	COT	393	0	5/27/2005
CORONADO POINTE COMMERCE CENTER(RESUB)(1-3,7-18)	38021	PIMA	13	0	11/30/1984
CORONET PARK SUBD. NO. 1	13099	PIMA	200	0	7/9/1959
CORTINA VILLAS (1-14)	42088	PIMA	14	0	3/16/1989
COTTONWOOD MANOR	13040	COT	116	0	10/27/1958
COYOTE PASS (1-23)	58019	COT	23	0	3/25/2004
CRITTERLAND II (1-148)	57003	PIMA	148	0	3/25/2003
CURLY HORN RANCHES	13033	PIMA	47	0	10/2/1958
CURLY HORN RANCHES NO. 2	13050	PIMA	37	0	12/29/1958

DATELAND(1-9)	12045	PIMA	9	0	6/14/1957
DELCON INDUSTRIAL PARK (1-8)	19060	PIMA	8	0	1/23/1969
DESERT CASITAS(1-120)	36005	PIMA	120	0	3/3/1983
DESERT HILLS NO.1 TOWNHOMES(1-23)	45085	PIMA	23	0	4/12/1994
DESERT RIDGE (1-98)	35073	PIMA	98	0	11/5/1982
DESERT RIDGE ESTATES(1-9)	48003	PIMA	9	0	1/17/1996
DESERT SPRINGS (BLK. 1-5)	51011	PIMA	0	5	6/5/1998
DESERT STAR (1-98)	52063	COT	98	1	8/3/1999
DESERT STONE (1-260)	60048	COT	260	0	11/23/2005
DESERT VIEW ADDITION	8076	PIMA	42	0	3/31/1948
DESERT VIEW EST. (1-9)	34017	PIMA	9	0	5/4/1981
DESERT VIEW ESTATES (1-14)	37087	PIMA	14	0	8/24/1984
DIABLO VILLAGE ESTATES (1- 511)	28033	PIMA	511	0	12/31/1977
DIABLO VILLAGE ESTATES (512- 888)	29074	PIMA	376	0	7/11/1978
DIAMOND BELL RANCH - TUCSON (1-229)	20002	PIMA	229	0	9/5/1969
DIAMOND BELL RANCH - TUCSON (UNIT 7)	24011	PIMA	0	2	10/26/1972
DIAMOND BELL RANCH - TUCSON UNIT 10 (1-208)	21015	PIMA	208	0	12/14/1970
DIAMOND BELL RANCH - TUCSON UNIT 13 (1-216)	22025	PIMA	216	0	10/27/1971
DIAMOND BELL RANCH - TUCSON UNIT 14 (1-412)	24088	PIMA	412	0	3/5/1973
DIAMOND BELL RANCH - TUCSON UNIT 2 (1-48)	20007	PIMA	48	0	9/17/1969
DIAMOND BELL RANCH - TUCSON UNIT 3 (1-409)	20037	PIMA	409	0	12/22/1969
DIAMOND BELL RANCH - TUCSON UNIT 4 (1-513)	20044	PIMA	513	0	1/15/1970
DIAMOND BELL RANCH - TUCSON UNIT 7 (1-416)	20086	PIMA	416	0	8/7/1970
DIAMOND BELL RANCH - TUCSON UNIT 7 (LOTS 1-15)	26071	PIMA	15	0	10/8/1974
DIAMOND BELL RANCH - TUCSON UNIT 9 (LOTS 58-375)	21046	PIMA	317	0	3/8/1971
DIAMOND BELL RANCH / TUCSON CHAPARRAL UNIT (1- 24, 26-228)	20011	PIMA	226	0	10/8/1969
DIAMOND BELL RANCH TUCSON UNIT 11 (1-448)	21027	PIMA	448	0	1/7/1971
DIAMOND BELL RANCH TUCSON UNIT 12 (1-402)	21081	PIMA	402	0	6/23/1971
DIAMOND BELL RANCH TUCSON UNIT 5 (1-521)	20052	PIMA	521	0	2/16/1970

DIAMOND BELL RANCH TUCSON UNIT 6 (1-435)	20062	PIMA	435	0	4/6/1970
DIAMOND BELL RANCH TUCSON UNIT 8 (1-385)	20094	PIMA	385	0	8/21/1970
DRAKE'S ADDITION	3040	COT	5	8	9/13/1901
DUVAL 19 COMMERCIAL CENTER(1-8)	43037	SAH	8	0	12/22/1989
DUVAL COMMERCIAL(1-28)	36003	PIMA	28	0	3/23/1983
EAST SIDE ADDITION	3072	COT	1	1	11/07/1887
EASTSIDE CYCLE PARK (1)	18071	PIMA	1	0	3/14/1966
EL TIRADOR ESTATES (1-183)	20069	PIMA	183	0	5/8/1970
EL TIRO ESTATES (1-31)	19001	PIMA	31	0	8/10/1967
EL TIRO HEIGHTS (1-4)	19046	PIMA	4	0	9/19/1968
EL TIRO VILLAS (1-32)	23035	PIMA	32	0	6/27/1972
EMPIRE HEIGHTS (1-241)	60093	COT	251	0	3/3/2006
EMPIRE SUBD.	9010	PIMA	21	0	1/19/1949
EMPIRE VISTA (1-153)	59092	PIMA	153	0	6/24/2005
ENCANTO ESTATES(1-59)	41069	PIMA	59	0	10/9/1987
ESTRELLA SUBDIVISION	10075	PIMA	181	0	8/20/1954
ESTRELLA(143-149&180)	30099	PIMA	8	0	6/19/1979
FARM FIELD FIVE (1-224)	60039	MAR	224	0	10/19/2005
FLOWING WELLS EST.	11050	COT	60	0	9/21/1955
FLOWING WELLS HOMES	13090	COT	75	0	6/2/1959
FLOWING WELLS MANOR	13062	COT	25	0	2/17/1959
FLOWING WELLS MEADOWS	12022	COT	12	0	1/14/1957
FLOWING WELLS PARK	13052	COT	24	0	1/5/1959
FLOWING WELLS PARK (5-7)	18036	COT	20	0	5/27/1965
FLOWING WELLS TERR.	12091	COT	29	0	3/20/1958
FLOWING WELLS VILLAGE	10059	COT	90	0	4/6/1954
FREEMAN ESTATES (1-18)	16032	PIMA	18	0	7/6/1962
FREEWAY AIRPORT INDUSTRIAL (1-20)	40070	COT	20	0	1/6/1987
FREEWAY INDUSTRIAL SUBD.	15073	COT	58	0	4/3/1961
GALLERY PARCEL 4A (1-32)	58016	MAR	32	0	3/19/2004
GALLERY PARCEL 4B (1-18)	56063	MAR	18	0	12/6/2002
GARDNER ESTATES (1-23)	25013	PIMA	23	0	4/27/1973
GARDNER MOBILE HOME ESTATES (1-96)	37088	PIMA	96	0	8/27/1984
GOLDER RANCH COMMERCIAL CENTER (1-5)	59055	PIMA	5	0	4/21/2005
GOLEMBIESKI ADDITION (1-4)	30030	PIMA	4	0	12/4/1978
GRABE INDUSTRIAL BLOCK	17011	COT	0	1	8/26/1963
GRANT INDUSTRIAL SITES	15046	PIMA	56	0	1/16/1961
GREEN VALLEY ACRES(1-23)	17002	PIMA	23	1	7/17/1963
GREEN VALLEY ADULT RV RESORT(1-163)	38028	PIMA	163	0	12/18/1984

GREEN VALLEY ARCES NO.2(1-112)	19064	PIMA	112	0	2/4/1969
GREEN VALLEY COMMERCIAL BLOCK NO. 2(1-5)	26067	PIMA	5	0	10/8/1974
GREEN VALLEY COMMERCIAL BLOCK(1-8)	25016	PIMA	0	80	5/17/1973
GREEN VALLEY COMMUNITY COMPLEX(1-11)	27022	PIMA	11	0	5/14/1975
GREEN VALLEY COUNTRY CLUB ESTATES (1-154)	20029	PIMA	154	0	12/4/1969
GREEN VALLEY COUNTRY CLUB ESTATES (155-376)	22024	PIMA	223	6	10/27/1971
GREEN VALLEY COUNTRY CLUB ESTATES(1-154)	20029	PIMA	154	14	12/4/1969
GREEN VALLEY COUNTRY CLUB ESTATES(155-376)	24035	PIMA	221	8	12/28/1972
GREEN VALLEY COUNTRY CLUB NORTH(1-145)	28026	PIMA	145	0	11/23/1976
GREEN VALLEY COUNTRY CLUB VISTAS NO.3(1-30)	29058	PIMA	30	0	5/8/1978
GREEN VALLEY COUNTRY CLUB VISTAS(1-229)	21047	PIMA	229	0	3/8/1971
GREEN VALLEY COUNTRY CLUB VISTAS(230-482)	22011	PIMA	252	0	9/8/1971
GREEN VALLEY DESERT HILLS NO. 2(1-613)	29080	PIMA	613	0	7/27/1978
GREEN VALLEY DESERT HILLS NO. 4 RESUB (22-41)	35066	PIMA	19	0	9/30/1982
GREEN VALLEY DESERT HILLS NO.1(1-24)	32075	PIMA	24	0	6/27/1980
GREEN VALLEY DESERT HILLS NO.2(203-233,326-373,380-409,479-513)	33036	PIMA	150	0	11/5/1980
GREEN VALLEY DESERT HILLS NO.2(582-595)	31021	PIMA	13	0	7/27/1979
GREEN VALLEY DESERT HILLS NO.3(1-753)	31025	PIMA	753	0	8/20/1979
GREEN VALLEY DESERT HILLS NO.4 (1-224)	35047	PIMA	224	0	6/16/1982
GREEN VALLEY DESERT HILLS NO.5 (1-196)	32077	PIMA	196	0	6/27/1980
GREEN VALLEY DESERT HILLS NO.6(1-30)	37013	PIMA	30	0	3/2/1984
GREEN VALLEY DESERT MEADOWS NO.1(1-198)	22065	PIMA	198	0	1/28/1972
GREEN VALLEY DESERT MEADOWS NO.2(1-209)	24002	PIMA	209	0	10/6/1972
GREEN VALLEY DESERT MEADOWS NO.3(1-223)	25073	PIMA	223	0	11/23/1973

GREEN VALLEY DESERT MEADOWS TOWNHOUSES(1-81)	27091	PIMA	81	0	6/1/1976
GREEN VALLEY DESERT MEADOWS TOWNHOUSES(82-197)	28027	PIMA	115	0	11/23/1976
GREEN VALLEY ESPERANZA ESTATES (101-205)	28083	PIMA	104	0	8/26/1977
GREEN VALLEY ESPERANZA ESTATES(1-100)	28004	PIMA	100	0	7/7/1976
GREEN VALLEY ESPERANZA ESTATES(206-258)	29088	PIMA	52	0	8/21/1978
GREEN VALLEY ESPERANZA ESTATES(259-368)	30053	PIMA	109	0	2/21/1979
GREEN VALLEY FAIRWAYS NO.2(236-474)	17097	PIMA	238	0	9/24/1964
GREEN VALLEY FAIRWAYS NO.3(475-763)	18051	PIMA	288	0	9/23/1965
GREEN VALLEY FAIRWAYS(1-235)	16094	PIMA	235	0	5/14/1963
GREEN VALLEY FARMS (1-17)	16081	PIMA	17	0	5/8/1963
GREEN VALLEY FOOTHILLS NO.2(1-60)	19065	PIMA	60	0	2/5/1969
GREEN VALLEY FOOTHILLS(1-16)	16082	PIMA	16	0	3/28/1963
GREEN VALLEY MEMORIAL GARDENS (BLKS. 1-8)	32055	SAH	0	8	5/13/1980
GREEN VALLEY MEMORIAL GARDENS I	40091	SAH	0	1	2/20/1987
GREEN VALLEY MOBILE ESTATES (1-311)	22012	PIMA	311	0	9/13/1971
GREEN VALLEY MOBILE ESTATES II(1-16)	27008	PIMA	16	0	3/4/1975
GREEN VALLEY MOBILE ESTATES(1-24)	28055	PIMA	24	0	4/12/1977
GREEN VALLEY MOBILE ESTATES(312-437)	25045	PIMA	125	0	8/29/1973
GREEN VALLEY MOBILE ESTATES(438-568)	29035	PIMA	130	0	3/3/1978
GREEN VALLEY MORTUARY AND MEMORIAL GARDENS (BLKS 1-6)	40029	SAH	0	6	10/8/1986
GREEN VALLEY RESORT HOMES(1-168)	34076	PIMA	168	0	10/7/1981
GREEN VALLEY RV RESORT (1-304)	37039	SAH	304	0	5/17/1984
GREEN VALLEY SOUTH ACRES(1-73)	28059	PIMA	73	0	4/28/1977
GREEN VALLEY TOWNHOUSE 6B(1-7)	27050	PIMA	7	0	10/16/1975

GREEN VALLEY TOWNHOUSE NO.7(186-385)	29007	PIMA	199	0	11/18/1977
GREEN VALLEY TOWNHOUSES NO.3(1-258)	24093	PIMA	258	0	3/15/1973
GREEN VALLEY TOWNHOUSES NO.6(1-84)	25074	PIMA	84	0	11/23/1973
GREEN VALLEY TOWNHOUSES NO.7	26041	PIMA	185	0	6/14/1974
GREEN VALLEY VISTA(1-74)	18016	PIMA	74	0	12/30/1964
GREENWALD ACRES (BLKS 1 & 2)	13071	PIMA	16	0	3/18/1959
GREENWALD ACRES (BLKS 3-6)	13093	PIMA	32	0	6/22/1959
GREENWALD ACRES (BLKS 7 & 8)	14078	PIMA	16	0	5/17/1960
HALCYON ACRES	6040	COT	25	0	9/6/1932
HALCYON ACRES ANNEX	8013	COT	6	0	1/10/1947
HALCYON ACRES ANNEX NO. 2	9039	COT	79	0	3/30/1950
HARDY PLACE(BLK 1)	31095	ORV	0	1	1/14/1980
HAVEN GREEN VALLEY EAST(1-479)	26093	PIMA	479	0	11/26/1974
HAVEN GREEN VALLEY WEST(480-840,842-1153)	27075	PIMA	671	0	3/25/1976
HEDRICK ACREAGE NO. 1	3108	COT	13	0	6/23/1920
HELTON ADDITION (LOTS 1-17)	17062	PIMA	17	0	4/2/1964
HERBERT TERRACE	15043	PIMA	20	0	1/5/1961
HIDDEN SPRINGS (1-5)	61025	MAR	5	0	5/19/2006
HIGHLAND MANOR ADDITION (1-12)	14008	PIMA	12	0	8/3/1959
HIGHLAND RESUB OF DRAKES ADDITION	3005	COT	1	0	3/14/1908
HIGHPOINTE(1-32)	44087	PIMA	32	0	5/17/1993
HOWARD INDUSTRIAL (1-3)	48019	COT	3	0	3/6/1996
HOWE PLACE	15009	PIMA	11	0	8/4/1960
HOWREY SUBDIVISION (1-6)	38075	PIMA	6	0	5/14/1985
HUNTER SUBDIVISION (1-124)	20058	PIMA	124	0	3/13/1970
HUNTER SUBDIVISION NO. 2 (1-121)	22097	PIMA	121	0	4/11/1972
HUNTER SUBDIVISION NO. 2 (122-190)	24097	PIMA	68	0	3/29/1973
HUNTER SUBDIVISION NO.2 (191-228)	24098	PIMA	37	0	3/29/1973
HUNTLEY'S ADDITION	3103	COT	1	0	5/4/1920
IRAS ADDITION (1-35)	15098	PIMA	35	0	11/22/1961
KACHINA RIDGE ESTATES(BK1)	36033	PIMA	0	1	6/28/1983
KERLEY INDUSTRIAL PARK (1)	22064	PIMA	1	0	1/28/1972
LA CANADA DESERT HOMESITES(1-2)	20087	PIMA	2	0	8/7/1970

LA CANADA DESERT HOMESITES(3-4)	21073	PIMA	2	0	6/10/1971
LA CANADA NORTE (1-50)	43015	SAH	50	0	9/6/1989
LA CANADA NORTE II (51-119)	46054	SAH	68	0	11/8/1994
LA ESTANCIA DE TUCSON (1-36)	54022	COT	36	0	11/22/2000
LA JOYA VERDE (1-75)	47006	SAH	75	2	4/28/1995
LA MIRA ADDITION	9007	PIMA	26	0	11/22/1948
LA MIRAGE ESTATES (1-507)	52082	MAR	507	0	10/8/1999
LA POSADA(1-2)	44031	PIMA	2	0	4/10/1992
LA VISTA RANCHETTES (1-18)	22066	PIMA	18	0	1/28/1972
LAS CAMPANAS BLK. J (1-37)	47086	PIMA	37	0	7/23/1996
LAS CAMPANAS(A-N)	47017	PIMA	0	14	5/24/1995
LAS QUINTAS DE SANTO TOMAS	12094	SAH	30	0	4/21/1958
LAS QUINTAS SERENAS	12056	SAH	9	0	9/5/1957
LAS QUINTAS SERNAS (10-40)	13044	SAH	30	0	12/4/1958
LAWSON ESTATES (1-9)	18077	COT	9	0	6/9/1966
LAWSON VALLEY	14099	PIMA	13	0	7/21/1960
LAZY C RANCH ESTATES NO. 2 (1-20)	15049	PIMA	20	0	1/26/1961
LOMA VERDE	40083	COT	0	1	2/4/1987
LOS ARROYOS (BLKS.1-5)	56074	SAH	0	5	12/18/2002
LOS ARROYOS DEL SUR (BLK. 1&2)	56073	SAH	0	2	12/18/2002
LOS MORTEROS EST. (1-32)	49021	MAR	32	0	1/27/1997
LOS RANCHITOS NUMBER 7	8071	PIMA	10	0	3/13/1948
LUNA DEL ORO CONDOS.	35017	COT	4	0	3/3/1982
MADERA CANYON TOWNHOUSES(1-43)	36054	PIMA	43	0	8/30/1983
MADERA PLAZA (1-34)	55023	PIMA	34	0	10/12/2001
MADERA RESERVE PHASE I(1-130)	47045	PIMA	130	0	8/8/1995
MADERA VISTA(1-85)	35001	PIMA	85	0	12/30/1981
MADERA VISTA(86-104)	35093	PIMA	18	0	2/8/1983
MAGI ESTATE(1-20)	38008	PIMA	20	0	10/15/1984
MANNING CAMP ENCLAVE (1-11)	58008	COT	11	0	3/1/2004
MANVILLE ESTATES (1-32)	16054	PIMA	32	0	11/7/1962
MCAFEE SUBDIVISION (1-12)	21074	PIMA	12	0	6/10/1971
MELODY LANE ESTATES NO. 1	15007	PIMA	44	0	8/4/1960
MELODY LANE ESTATES NO. 2	15034	PIMA	45	0	11/28/1960
MELODY LANE ESTATES NO. 3	15081	PIMA	16	0	5/19/1961
MELODY LANE ESTATES NO. 4 (1-35)	16085	PIMA	35	0	3/29/1963

MELODY LANE ESTATES NO. 5 (1-40)	20043	PIMA	40	0	1/14/1970
MESALAND	11065	PIMA	1	0	12/20/1955
MESALAND ANNEX(102-135)	11100	PIMA	33	0	8/30/1956
MESALAND(1-63)	11072	PIMA	63	0	3/9/1956
MESQUITE HEIGHTS (1-42)	45091	SAH	42	0	4/19/1994
MESQUITE RANCH (1-619)	55043	COT	619	0	12/13/2001
MIDGE MANOR (1-15)	20074	COT	15	0	5/28/1970
MILLSTONE INDUSTRIAL DISTRICT NO. 1 (BLKS 1-3)	13051	PIMA	0	3	12/29/1958
MILLSTONE MANOR NO. 4	10064	PIMA	30	0	6/3/1954
MONTANA VISTA	13059	PIMA	121	0	2/6/1959
MONTANA VISTA NO.2	13088	PIMA	80	0	6/2/1959
MONTANA VISTA NO.2	13088	PIMA	121	0	6/2/1959
MORELAND VISTA	13022	PIMA	35	0	7/22/1958
MORTIMORE ADDITION	10013	COT	282	0	12/4/1952
MOUNT LEMMON ESTATES #1 (1-31)	14035	PIMA	31	0	12/31/1959
MOUNT LEMMON ESTATES #2 (1-22)	14036	PIMA	22	0	12/31/1959
MOUNTAIN VIEW ACRES (1-12)	27076	SAH	12	0	4/6/1976
MOUNTAIN VISTA ESTATES (1-38)	25049	PIMA	38	0	9/10/1973
NEW TUCSON NO. 2 (1-201)	17048	PIMA	201	0	3/6/1964
NEW TUCSON UNIT NO. 10 (1-325)	18025	PIMA	325	0	2/4/1965
NEW TUCSON UNIT NO. 3 (1-3)	17049	PIMA	3	0	3/6/1964
NEW TUCSON UNIT NO. 5 (1-312)	17051	PIMA	312	0	3/6/1964
NEW TUCSON UNIT NO. 6 (1-75)	17074	PIMA	75	0	6/19/1964
NEW TUCSON UNIT NO. 7 (1-159)	17076	PIMA	159	0	7/9/1964
NEW TUCSON UNIT NO. 8 (1-455)	17084	PIMA	455	0	7/23/1964
NEW TUCSON UNIT NO. 9 (1-404)	18021	PIMA	404	0	1/13/1965
NOB HILL ADDITION	2005	COT	14	0	4/7/1904
NORTHWEST TUCSON INDUSTRIAL PARK (1-54)	46092	COT	54	0	2/28/1995
OASIS HILLS (1-90)	60038	MAR	90	1	10/19/2005
OASIS SANTA RITA (1-298)	59050	PIMA	298	0	4/14/2005
OCOTILLO PRESERVE (1-42)	60020	PIMA	42	0	8/26/2005
OCOTILLO RANCHES (1-44)	13011	PIMA	44	0	6/13/1958
OCOTILLO RANCHES NO. 2 (1-19)	13028	PIMA	19	0	8/8/1958

OLD WEST RANCHETTES (1-41)	22098	PIMA	41	0	4/11/1972
OLD WEST RANCHETTES (42-104)	23032	PIMA	62	0	6/15/1972
OLD WORLD ADDITION	5005	COT	36	0	1/31/1927
OLIVE HILL / UNIVERSITY TERRACE	2017	COT	1	0	4/5/1905
ORANGE GROVE I-10 PLAZA (1-20)	57068	MAR	20	0	10/17/2003
ORO HEIGHTS (1-26)	23090	PIMA	26	0	9/8/1972
PALM GROVE ESTATES	15058	PIMA	130	0	2/23/1961
PALM GROVE ESTATES ANNEX (1-15)	19072	PIMA	15	0	3/7/1969
PANORAMA HEIGHTS (1-29)	32068	PIMA	29	0	6/10/1980
PANORAMA RIDGE (1-8)	46080	PIMA	8	0	1/12/1995
PARK AVENUE RE-ALIGNMENT	4015	COT	1	0	11/14/1922
PARK CENTRE (1-180)	41019	PIMA	180	0	4/22/1987
PARK EL MONTE	12054	PIMA	76	0	9/5/1957
PARK EL MONTE CONDOMINIUMS (101-118, 201-218)	34049	PIMA	36	0	7/31/1981
PARK EL MONTE TERRACE	12066	PIMA	22	0	10/24/1957
PARKMORE ADDITION (1-20)	15090	PIMA	20	0	8/18/1961
PART OF RINCON HEIGHTS	3106	COT	1	2	5/20/1920
PEACH VALLEY SUBDIVISION	13096	PIMA	43	0	6/25/1959
PICTURE ROCKS ESTATES (1-20, 22-24)	21091	PIMA	23	0	7/27/1971
PICTURE ROCKS WEST (1-65)	47002	PIMA	65	0	4/13/1995
PIMA FARMS (1-83)	60059	PIMA	83	0	12/26/2005
PIMERIA ALTA ESTATES (BLOCKS 1 & 2)	38009	PIMA	0	2	10/17/1984
PLUM ACRES	12082	PIMA	15	0	2/6/1958
PLUMER & STEWARD'S ADDITION	2013	COT	205	0	10/24/1904
POMONA ADDITION	10025	PIMA	43	0	3/6/1953
PORTILLA RIDGE(1-143)	47023	PIMA	143	0	6/6/1995
PORTILLO HILLS II(1-29)	45010	PIMA	29	0	8/4/1993
PORTILLO HILLS II(30-88)	45049	PIMA	58	0	11/23/1993
PORTILLO HILLS(1-39)	43093	PIMA	39	0	5/8/1991
PORTILLO PLACE(1-28)	47011	PIMA	28	0	5/10/1995
PRINCE-ROMERO BUSINESS CTR. (1-71)	37062	COT	71	0	7/10/1984
QUAIL CREEK (1-306)	43039	SAH	306	0	1/31/1990
QUAIL CREEK II (1-34)	51058	SAH	34	0	10/27/1998
QUAIL CREEK II (1-77)	53086	SAH	77	0	8/10/2000
QUAIL CREEK II (78-394)	54027	SAH	316	0	12/7/2000
QUAIL CREEK II UNIT 11 (1-119)	55075	SAH	119	0	3/28/2002

QUAIL CREEK II UNIT 12 (1-43)	60024	SAH	43	0	9/16/2005
QUAIL CREEK II UNIT 14 (1-105)	55077	SAH	105	0	3/28/2002
QUAIL CREEK II UNIT 15 (1-120)	60023	SAH	120	1	9/16/2005
QUAIL CREEK II UNIT 16 (1-114)	55062	SAH	114	0	2/26/2002
QUAIL CREEK II UNIT 17 (1-112)	57007	SAH	112	0	4/2/2003
QUAIL CREEK II UNIT 18 (1-36)	55061	SAH	36	0	2/22/2002
QUAIL CREEK II UNIT 19 (1-109)	59007	SAH	109	0	11/10/2004
QUAIL CREEK II UNIT 23 (1-96)	59024	SAH	96	0	1/6/2005
QUAIL CREEK II UNIT 26(1-56)	57033	SAH	56	0	6/11/2003
QUAIL CREEK II UNIT 31 (1-80)	58098	SAH	80	0	10/21/2004
QUAIL CREEK II UNIT 9 (1-97)	55076	SAH	97	0	3/28/2002
QUAIL CROSSING (1-150)	49004	MAR	150	0	12/10/1996
QUAIL'S NEST (1-2)	46017	COT	2	0	7/6/1994
RAIL N RANCH NO. 1 (1-21)	22049	PIMA	21	0	12/27/1971
RANCH ACRES ESTATES (1-52)	21069	PIMA	52	0	5/24/1971
RANCH ACRES NO. 2 (1-16)	23003	PIMA	16	0	4/19/1972
RANCHITA AVRA (1-60)	40071	PIMA	60	0	1/7/1987
RANCHO BUENA VISTA (1-29)	43062	SAH	29	0	8/24/1990
RANCHO BUENA VISTA (30-69)	44054	SAH	39	0	10/22/1992
RANCHO DEL NORTE (1-57)	21070	PIMA	57	0	5/24/1971
RANCHO DEL NORTE NO. 2 (1-29)	23088	PIMA	29	0	9/8/1972
RANCHO DESPOBLADO ESTATES(1-10)	12007	PIMA	10	0	11/7/1956
RANCHO VALENCIA BLK A (1-183)	60017	PIMA	183	1	8/12/2005
RAY SUBDIVISION	9095	PIMA	71	0	3/15/1952
RESUBDIVISION OF COTTONWOOD MANOR	14071	COT	6	1	5/4/1960
RILLITO VISTA (1-60)	21076	PIMA	60	0	6/10/1971
RINCON DESERT ESTATES (1-47)	16087	PIMA	47	0	4/15/1963
RINCON FOOTHILLS ESTATES CONSERVATION (1-14)	60029	COT	14	0	9/21/2005
RINCON HEIGHTS	3089	COT	42	0	11/26/1919
RINCON RANCH ESTATES NO. 1	8008	PIMA	17	0	12/18/1946
RINCON VALLEY ESTATES (1-15)	34005	PIMA	15	0	4/8/1981
RINCON VIEW ESTATES (1-87)	16038	PIMA	87	0	8/22/1962
RITA 244 (BLK. 1-12)	55071	COT	0	12	3/21/2002
RIVERSIDE GARDENS	12061	PIMA	97	0	10/10/1957
ROADHAVEN RESORTS INC. GREEN VALLEY(1-425)	37004	PIMA	425	0	2/17/1984
ROMERO INDUSTRIAL PARK	15065	COT	43	0	3/3/1961
ROMERO PARK	13045	PIMA	54	0	12/4/1958

ROSS ACRES	8065	COT	33	0	2/4/1948
SADDLE CLUB ESTATES (1-21)	21087	PIMA	21	0	7/16/1971
SAFEWAY AT SAHUARITA CENTER	57084	SAH	5	0	12/19/2003
SAGUARO MONUMENT ESTATES (1-21)	61021	COT	21	0	5/12/2006
SAGUARO RANCH (9-52) BLKS.1-4	57057	MAR	43	4	9/9/2003
SAGUARO RANCH SOUTH AMENDED (1-31)	59069	MAR	31	0	5/11/2005
SAGUARO SHADOWS (1-24)	24019	PIMA	24	0	11/17/1972
SAGUARO SPRINGS BLKS 1-10, A-D (1-9, A-B)	58023	PIMA	9	10	4/12/2004
SAMALAYUCA ESTATES(1-48)	11007	PIMA	48	0	3/29/1955
SAMANIEGO ESTATES (1-20)	34087	PIMA	20	0	11/18/1981
SAN IGNACIO GOLF ESTATES(1-46)	44076	PIMA	46	0	4/13/1993
SAN IGNACIO GOLF ESTATES(47-108)	45038	PIMA	61	0	10/21/1993
SAN IGNACIO HEIGHTS(136-156)	44058	PIMA	20	1	11/4/1992
SAN IGNACIO HEIGHTS(1-92)	43076	PIMA	92	0	12/21/1990
SAN IGNACIO HEIGHTS(93-135)	44001	PIMA	32	0	8/21/1991
SAN IGNACIO RIDGE ESTATES (1-115)	45073	PIMA	115	0	3/7/1994
SAN IGNACIO RIDGE ESTATES(116-185)	46028	PIMA	69	0	8/9/1994
SAN IGNACIO RIDGE ESTATES(20-28,35-58,103-115)	46023	PIMA	43	0	7/22/1994
SAN IGNACIO VISTAS (1-223)	46075	PIMA	223	0	1/9/1995
SAN LUCAS (BLKS. 1-12)	57055	MAR	0	12	9/5/2003
SAN LUCAS BLK 11 (1-75)	60099	MAR	75	1	3/10/2006
SAN LUCAS BLK 2 (1-126)	60076	MAR	126	1	2/10/2006
SAN LUCAS BLK 5 (1-60)	60078	MAR	60	1	2/10/2006
SAN LUCAS BLK 7 (1-64)	60080	MAR	64	1	2/10/2006
SAN LUCAS BLK 8 (1-90)	60081	MAR	90	1	2/10/2006
SAN LUCAS BLK 9 (1-95)	60082	MAR	95	1	2/10/2006
SAN LUCAS BLKS 3-4 (127-285)	60077	MAR	159	2	2/10/2006
SAN LUCAS BLKS 6 & 12 (BLK 6 61-115 & BLK 12 116-175)	60079	MAR	113	2	2/10/2006
SANTA CRUZ MEADOWS (1-239)	46062	SAH	239	0	11/25/1994
SANTA RITA BEL AIR HILLS (1-11) BLK(1-12)	52006	PIMA	11	12	2/26/1999
SANTA RITA FOOTHILLS ESTATES BLK 1 (1-296)	59014	PIMA	296	1	12/8/2004
SANTA RITA RANCH II (1-301), (BLK A-F & G-Q)	59063	PIMA	301	17	5/4/2005

SANTA RITA SPRINGS (1-5)	54054	PIMA	5	0	3/6/2001
SANTA RITA SPRINGS (BLKS. 1-6)	50069	PIMA	0	6	12/9/1997
SANTA RITA SPRINGS RESUB (1-7)	55094	PIMA	7	0	5/6/2002
SANTO TOMAS DEL NORTE (1-28)	18090	SAH	28	0	12/22/1966
SANTO TOMAS DEL NORTE (29-52)	18098	SAH	23	0	6/23/1967
SANTO TOMAS DEL NORTE (53-80)	19014	SAH	27	0	1/18/1968
SANTO TOMAS DEL NORTE (81-112)	19029	SAH	31	30	4/5/1968
SANTO TOMAS VILLAGE (1-37)	18045	SAH	37	0	7/22/1965
SIERRA TORTUGA (1-14)	53006	COT	14	0	12/14/1999
SIERRITA SUBDIVISION(1-3)	27030	PIMA	3	0	7/29/1975
SILVER SHADOWS (1-7)	59076	MAR	7	0	5/20/2005
SKY LINE RANCHOS	10073	PIMA	91	0	8/17/1954
SKYRANCH BLKS A-B (1-365)	58058	MAR	365	3	6/18/2004
SOMBRA DEL TECOLOTE (1-8)	58032	PIMA	8	0	4/16/2004
SONOITA RANCH (1-50)	59048	PIMA	50	0	3/29/2005
SONORA AT RANCHO SAHUARITA PHASE 2 (244-377)	58028	SAH	927	0	9/16/2005
SPANISH HILLS ABANDONMENT PLAT	54035	PIMA	1	0	12/15/2000
STAR VALLEY BLK 13 (1-302)	60046	PIMA	302	1	11/8/2005
STAR VALLEY BLK 1-30	56055	PIMA	0	30	11/7/2002
STAR VALLEY BLK. 10 (1-228)	57087	PIMA	30	0	12/23/2003
STAR VALLEY BLK. 2 (212)	57086	PIMA	212	0	12/23/2003
STAR VALLEY BLOCK 15	57088	PIMA	484	1	12/23/2003
STAR VALLEY BLOCK 18	57089	PIMA	286	0	12/23/2003
STAR VALLEY VILLAGE BLK 1-8	51088	PIMA	0	8	1/26/1999
STARPASS (BLK. A-P, 1-8)	40033	COT	0	24	10/10/1986
STARR PASS	44060	COT	0	45	11/25/1992
STARR PASS VISTAS (BLKS. A-E, F1- F3)	58020	COT	0	8	3/25/2004
STEFAN ESTATES (1-5)	30011	COT	5	0	10/17/1978
STONE HOUSE PHASE I (1-63)	59038	SAH	63	0	3/3/2005
STONE RIDGE II (1-40)	56047	COT	40	0	10/18/2002
SUMMERHAVEN	4099	PIMA	0	39	9/30/1926
SUN TRAN BSMF (1-2)	56014	COT	2	0	6/13/2002
SUNHAVEN OF TUCSON (1-201)	25055	PIMA	201	0	9/12/1973
SUNRISE POINTE (1-135)	46087	PIMA	135	0	2/8/1995
SUNRISE POINTE VISITAS PHASE ONE(1-106)	48034	PIMA	106	0	5/2/1996

SYCAMORE CANYON BLKS 1-18	58026	PIMA	0	18	4/14/2004
SYCAMORE CANYON BLKS A & B (1-485)	59015	PIMA	485	2	12/10/2004
SYCAMORE CANYON ESTATES (1-19)	49043	PIMA	19	0	3/31/1997
SYCAMORE HILLS EST. (1-82)	57080	PIMA	82	0	11/13/2003
T BENCH BAR (1-8)	59068	MAR	8	0	5/11/2005
TANGERINE CROSSING BLKS 1-5 (1-347)	60087	MAR	347	5	2/17/2006
THE ESTATES AT STARR PASS (1-14)	57060	COT	14	0	9/18/2003
THE GREENS AT SANTA RITA SPRINGS(1-167)	47087	PIMA	167	0	12/12/1995
THE PRESERVE AT DOVE MOUNTAIN	57074	MAR	182	0	11/7/2003
THE PRESERVE II AT DOVE MOUNTAIN (183-305)	58082	MAR	123	0	8/20/2004
THE PRESERVE II AT DOVE MOUNTAIN (266-269)	60030	MAR	3	0	9/23/2005
THE PRESIDIOS AT RANCHO SAHUARITA (1-927)	60025	SAH	927	0	9/16/2005
THE QUORUM (1-13)	38016	SAH	13	0	10/30/1984
THE SPRINGS AT SANTA RITA(426-464)	49007	PIMA	38	0	12/17/1996
THORNYDALE TERRACE(1-104)	41081	PIMA	104	0	11/6/1987
TIERRA LINDA (1-49)	17092	PIMA	49	0	9/9/1964
TRAILERANCHO ESTATES (1-4)	21049	PIMA	4	0	3/8/1971
TRAILS WEST COMMERCIAL CENTER	51080	COT	6	0	1/12/1999
TREASURE HOMES ESTATES (1-43)	21029	PIMA	43	0	1/11/1971
TRILBY TERRACE (1-10)	14009	PIMA	10	0	8/4/1959
TUCSON AVRA WEST II (1-8)	54095	PIMA	8	0	7/31/2001
TUCSON GREEN VALLEY UNIT NO. 2 BLOCK 14 TOWNHOUSE APARTMENT NO. 4	19023	PIMA	0	1	2/19/1968
TUCSON GREEN VALLEY UNIT NO.1	16076	PIMA	0	12	3/6/1963
TUCSON GREEN VALLEY UNIT NO.1	16076	PIMA	0	12	1/29/1963
TUCSON PARK WEST	18075	COT	0	1	4/27/1966
TWIN LAKES (1-148)	17070	PIMA	148	0	5/7/1964
TWIN LAKES (163-193)	43006	PIMA	30	0	8/2/1989
TWIN LAKES (194-231)	43051	PIMA	37	0	4/24/1990
TWIN LAKES MOBILE ESTATES (22-67)	23004	PIMA	47	0	4/24/1972
UNIT 3 QUAIL CREEK II (1-34)	54098	SAH	34	0	8/9/2001

UNIVERSITY TERRACE RESUB.	4086	COT	1	0	12/14/1925
VALENCIA ALVERNON COMMERCE CENTER (1-86)	47004	COT	86	0	4/20/1995
VALENCIA RESERVE (1-326)	58059	COT	326	0	6/21/2004
VALENCIA RESERVE SOUTH (1-315)	60008	COT	315	3	7/15/2005
VALLE DEL SOL (1-13)	32041	SAH	13	0	4/15/1980
VALLE VERDE DEL NORTE (101-105)	38002	SAH	5	0	9/25/1984
VALLE VERDE DEL NORTE (1-100)	24021	SAH	100	0	11/20/1972
VALLE VERDE(1-88)	48023	PIMA	88	0	3/13/1996
VALLEY HOMES ADDITION	12038	PIMA	42	0	5/13/1957
VALLEY LANE TOWNHOMES (135-169)	51048	PIMA	34	0	9/21/1998
VALSTATE (1-680)	55051	PIMA	680	0	1/20/2002
VANDERBILT BLKS 1-13	60007	MAR	0	13	7/13/2005
VERDE ACRES	12032	COT	61	0	3/27/1957
VICTORIA GARDENS (1-31)	21021	PIMA	31	0	12/18/1970
VILLAS HERMOSA (1-8)	47082	PIMA	8	0	11/22/1995
VILLAS SANTA RITA(1-55)	32088	PIMA	55	0	7/2/1980
VISTA DEL LAGO	9113	PIMA	60	0	6/27/1952
VISTA DEL NORTE	12064	COT	125	0	10/11/1957
VISTA MONTANA ESTATES PHASE 1 (1-215)	58096	COT	215	0	10/15/2004
VOYAGER HOMES PHASE "A" (1-85)	47030	COT	85	0	6/27/1995
WESTBROOKE (1-61)	45100	PIMA	61	0	5/10/1994
WESTGATE TOWNHOUSES	20054	COT	110	0	2/20/1970
WESTWAY HOMESITES	14049	PIMA	101	0	3/11/1960
WESTWOOD TERR. EST. (1-48)	22018	COT	48	0	9/15/1971
WESTWOOD VILLAGE	15031	COT	100	0	11/16/1960
WHITE FARMS (1-3)	55028	MAR	3	0	10/18/2001
WILLOW RIDGE BLKS A-F	60022	PIMA	0	6	9/14/2005
WILLOW RIDGE COMMONS (1-155)	60098	PIMA	155	1	3/10/2006
WINTERHAVEN	9008	COT	260	0	12/13/1948
WRANGLER RANCHES (1-56)	13081	PIMA	56	0	5/5/1959
WRANGLER RANCHES NO. 2	14005	PIMA	88	0	7/14/1959

TABLE 6: NON-CAGR D SUBDIVISIONS IN PIMA COUNTY 2005 WHICH ARE CONDITIONALLY OR PERMANENTLY PROTECTED FROM DEVELOPMENT

Subdivision	Plat Book and Page	Jurisdiction	Lot Count	Recorded Date
ACREAGE		PIMA	0	
BELVEDERE ESTATES (1-21)	35045	COT	21	06/09/1982
CANOA RANCH BLKS. 1-45	54074	PIMA	0	05/08/2001
CONTINENTAL RESERVE BLKS 1-20	53035	MAR	0	02/18/2000
CONTINENTAL RESERVE BLKS 1-20	53035	MAR	0	02/28/2000
EMPIRE RANCH BLKS 1,2	31100	PIMA	0	01/22/1980
EMPIRE RANCH BLKS 1,2	31100	PIMA	0	01/22/1980
MOUNT LEMMON ESTATES #1 (1-31)	14035	PIMA	31	12/31/1959
MOUNT LEMMON ESTATES #2 (1-22)	14036	PIMA	22	12/31/1959
OASIS HILLS (1-90)	60038	MAR	90	10/19/2005
SKYRANCH BLKS A-B (1-365)	58058	MAR	365	06/18/2004
STARR PASS	44060	COT	0	11/25/1992
SUMMERHAVEN	04099	PIMA	0	09/30/1926
THE PRESERVE II AT DOVE MOUNTAIN (183-305)	58082	MAR	123	08/20/2004
THE PRESERVE III AT DOVE MOUNTAIN (306-486, 530-534 & 577-605)	61054	MAR	213	08/04/2006
TUCSON GREEN VALLEY UNIT NO.1	16076	PIMA	0	03/06/1963

TABLE 7: CAGR D MEMBER SERVICE AREAS IN TUCSON ACTIVE MANAGEMENT AREA AS OF MAY 2007

Member Area	County	Membership Date
Marana	Pima	12/12/1995
Metropolitan Domestic Water Improvement District - West	Pima	12/19/2005
Metropolitan Domestic Water Improvement District	Pima	12/13/1995
Oro Valley	Pima	3/18/1997
Rancho Sahuarita Water Company	Pima	7/26/1999
Spanish Trail Water Company	Pima	12/14/1997
Tucson	Pima	12/19/1996
Vail Water Company	Pima	11/20/1995
Willow Springs Utilities, LLC	Pinal	10/22/2006

TABLE 8: NON-CAGRD WATER SERVICE AREAS IN THE TUCSON ACTIVE MANAGEMENT AREA, 2005

Water Company

Anway - Manville LLC
Arizona State Prison
Avra
AZ Water Co Oracle
Comm. Water Co Of Green Valley
Despoblado Water Co
Diablo Water Company
DFAMB Water System
Farmers Water Co
Flowing Wells Id
Green Valley Water Co
Lago Del Oro Water Co
Lakewood Water Company
Las Quintas Serenas W.C.
Lazy C Water Service
Logan Hills Water Co
Los Cerros Water Co
Lynn Lee
Marana Domestic Water Imp Dist
Mesaland Water Co
Mirabell Water Co
Orchid Valley MWP
Pantano Properties HOA
Rancho Del Conejo
Rancho Resort
Ray Water Company
Rincon Creek Water Co.
Rincon Ranch Estates
Saguaro Water Company
Samayayuca Ia
Sandario
Thim Utility/E&T Division
Thim Water Corp.
U of A
Valle Verde Del Norte WC
Voyager Water Company
Winterhaven Water And Co
Worden