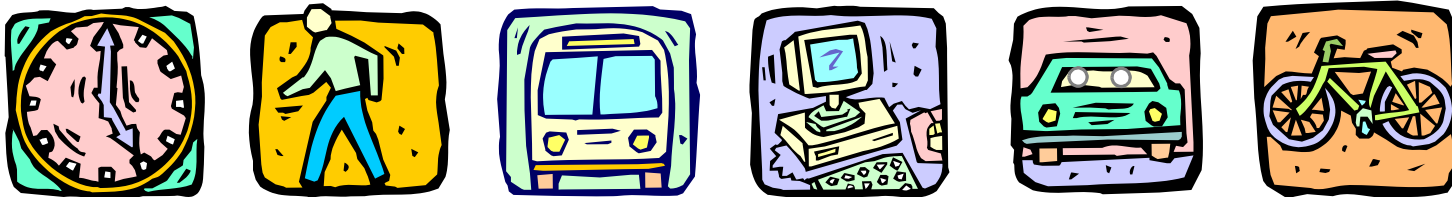


TRAVEL REDUCTION PROGRAM 2004 REGIONAL SURVEY RESULTS



April 2005

And the winners are...



PIMA ASSOCIATION OF GOVERNMENTS

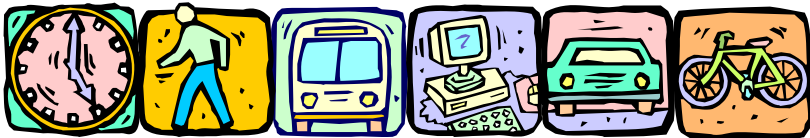
WWW.PAGNET.ORG



Jurisdictions

Pima Association of Governments

- # Pima County
- # City of Tucson
- # City of South Tucson
- # Town of Marana
- # Town of Oro Valley
- # Town of Sahuarita
- # Pascua Yaqui Tribe (Non-TRP)
- # Tohono O'odham Nation (Non-TRP)



Regional Task Force Members

MAJOR EMPLOYERS (10) - Elected

Caryl Bortner
Jennifer King
Charles Franz
Ron Gonzales
Alisha Meza
Jackie Murphy
Joe Portale
Richard Reetz
Barbara Ricca
Willie Wash

University Medical Center
Tucson Electric Power Company
The University of Arizona
Raytheon Missile Systems
Marana Unified School District
Tucson Airport Authority
Pima County Community College District
APAC Customer Services, Inc.
IBM
Arizona State Prison - Tucson Complex

JURISDICTION REPRESENTATIVES (6)

Trace Tang
Beth Gorman
Jeff Grant
Jane Howell
Richard Salaz
Sam Testa

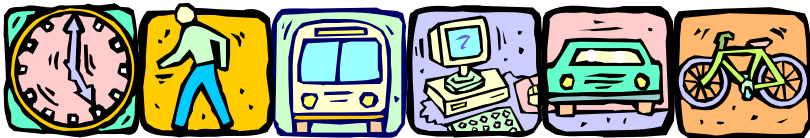
City of Tucson
Pima County
Town of Oro Valley
Town of Marana
City of South Tucson
Town of Sahuarita

PUBLIC INTEREST ORGANIZATION REPRESENTATIVES (2) -Vacant

VOLUNTARY TRP PARTICIPANTS (2) - Vacant

Ordinance Mandates (Employer \$ 100 FTE)

- # Appoint a Transportation Coordinator
- # Distribute Alternate Mode Information
- # Annually Survey Employees
- # Annually Submit a TRP Plan



AMU Goals

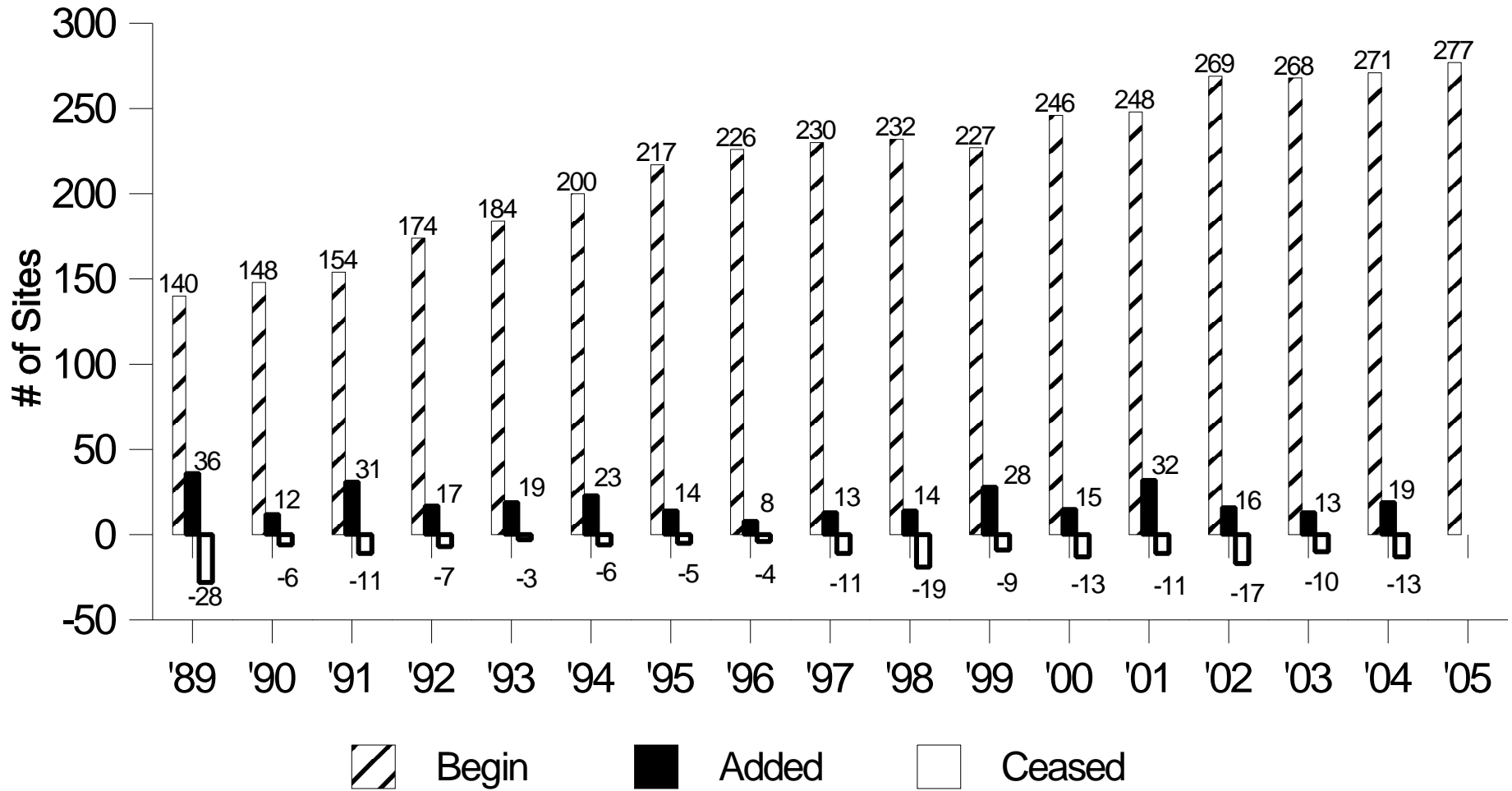
AMU:
Alternate Mode Usage
(one day a week)

After 3rd Compliance year,
AMU goal increases by 1%
until 40% cap is reached.

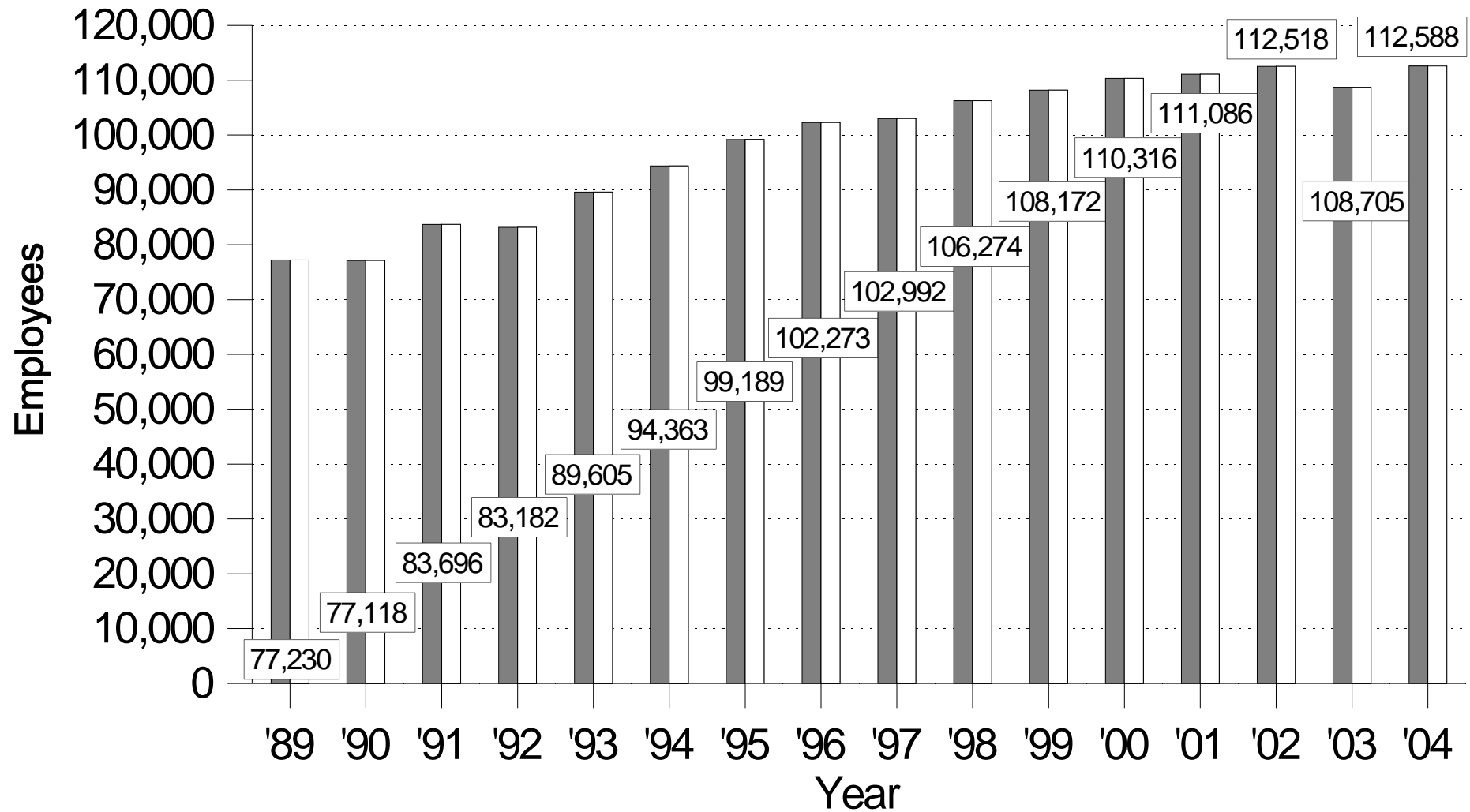
Compliance Year	AMU Goal
Baseline	N/A
1st	15%
2nd	20%
3rd	25%
4th	26%
5th	27%
6th	28%
7th	29%
8th	30%
9th	31%
10th	32%
11th	33%
12th	34%
13th	35%
14th	36%
15th	37%

Note: For 3rd compliance year or greater an alternate goal of 1.5% reduction in Vehicle Miles Traveled (from previous year) is applicable if the site achieves an AMU of 25% or more.

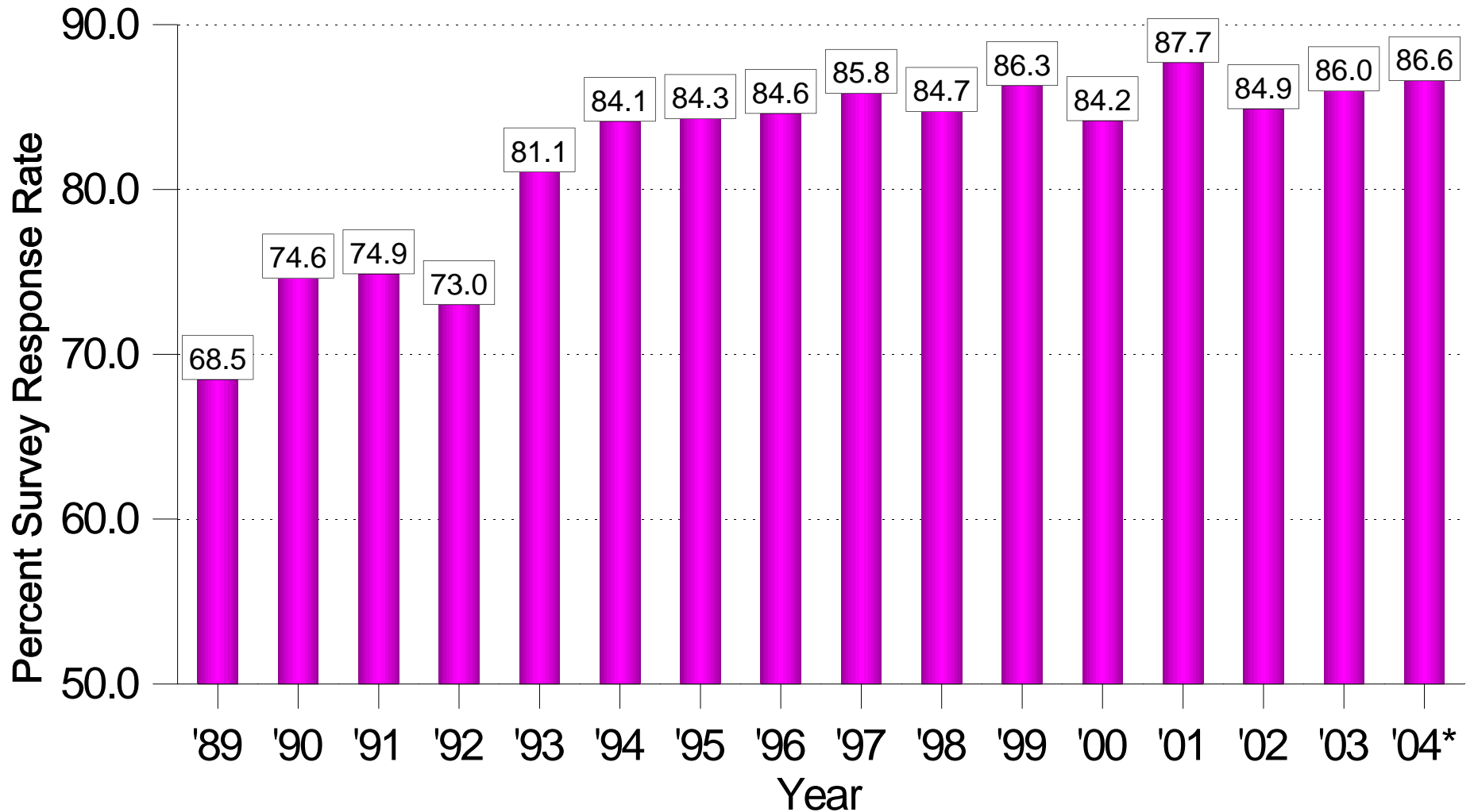
Participating Sites



Number of Employees



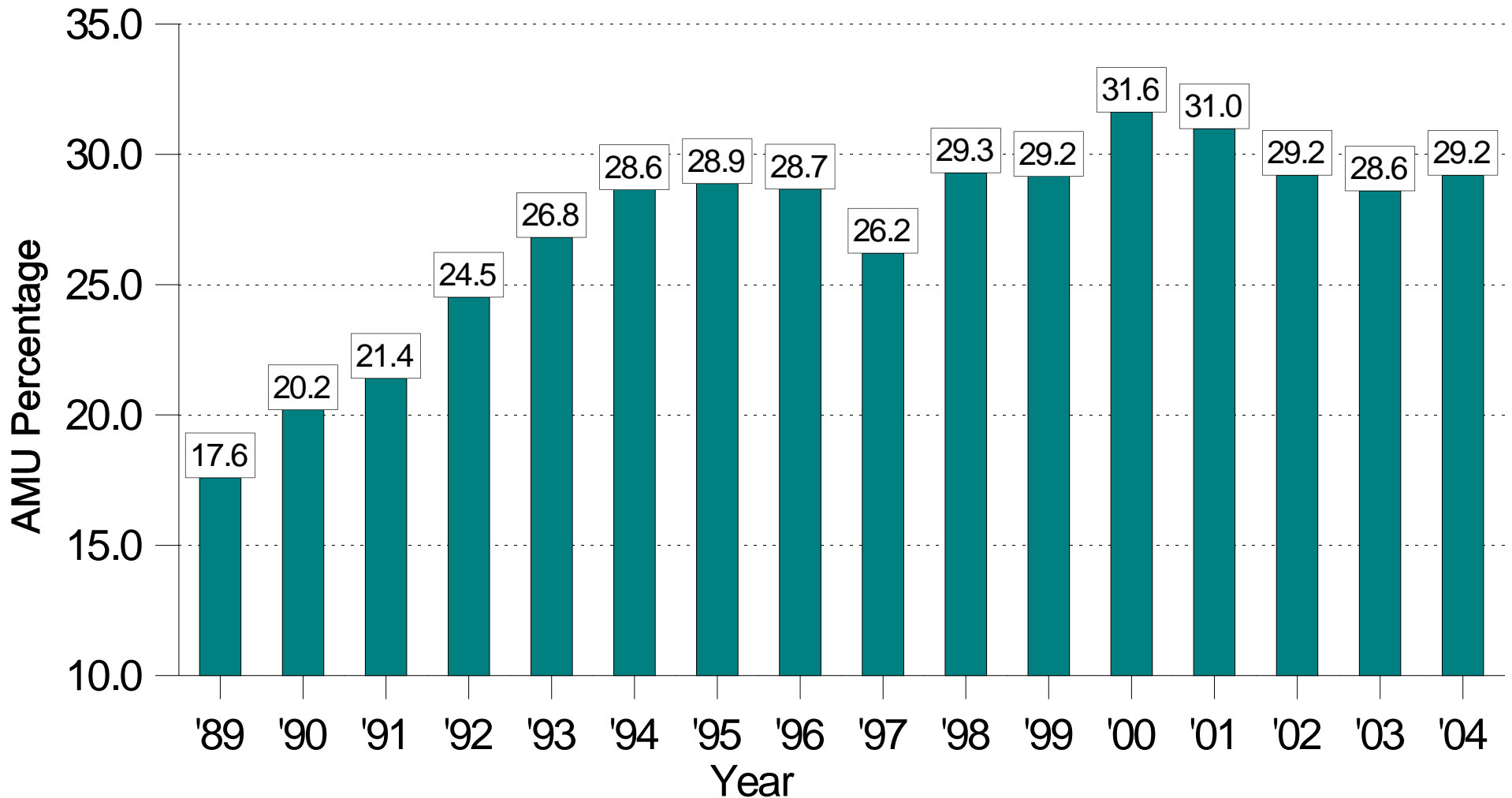
Survey Response Rate



*97,506 valid surveys processed

Regional Goal = 70%

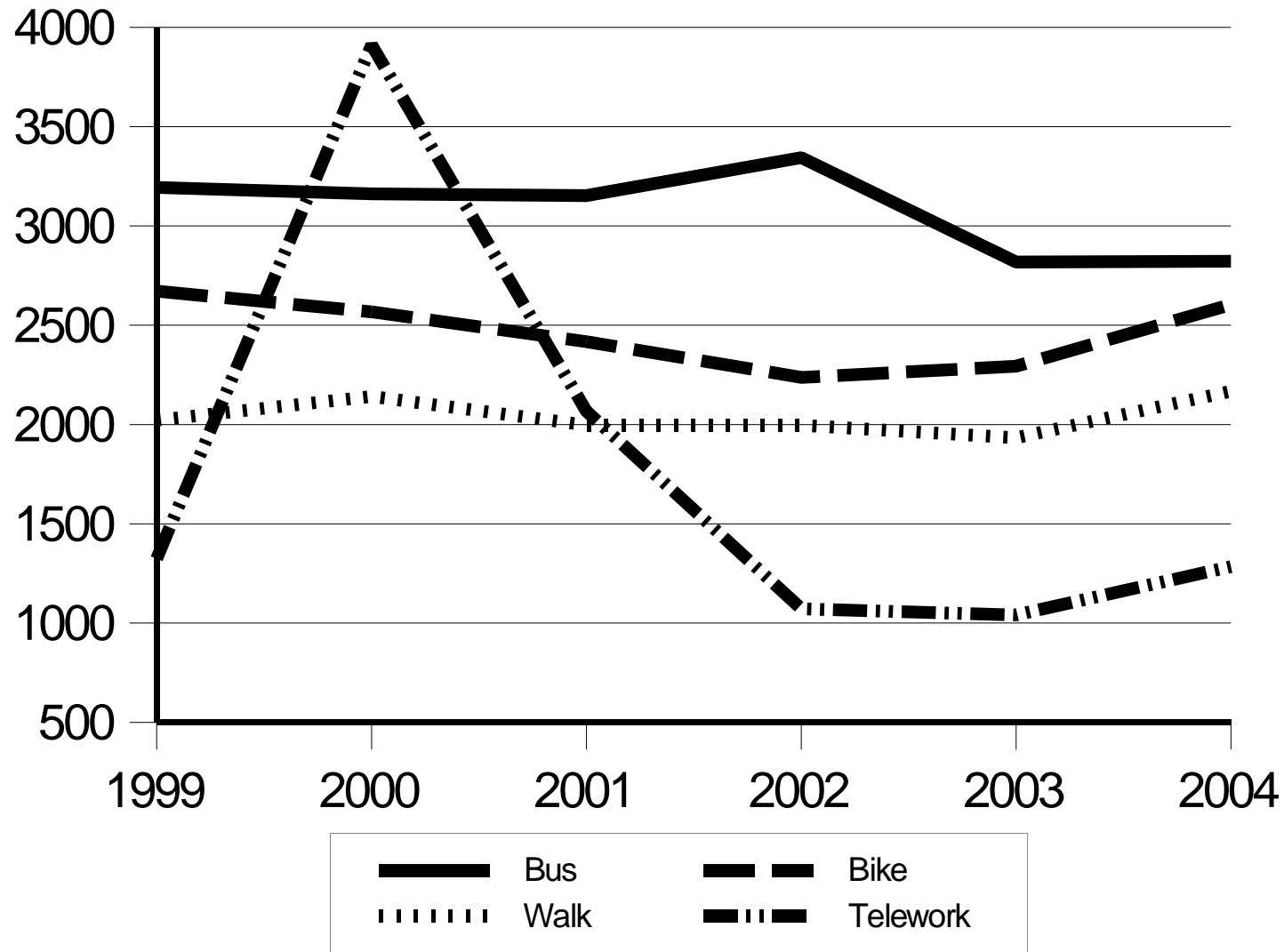
Alternate Mode Usage



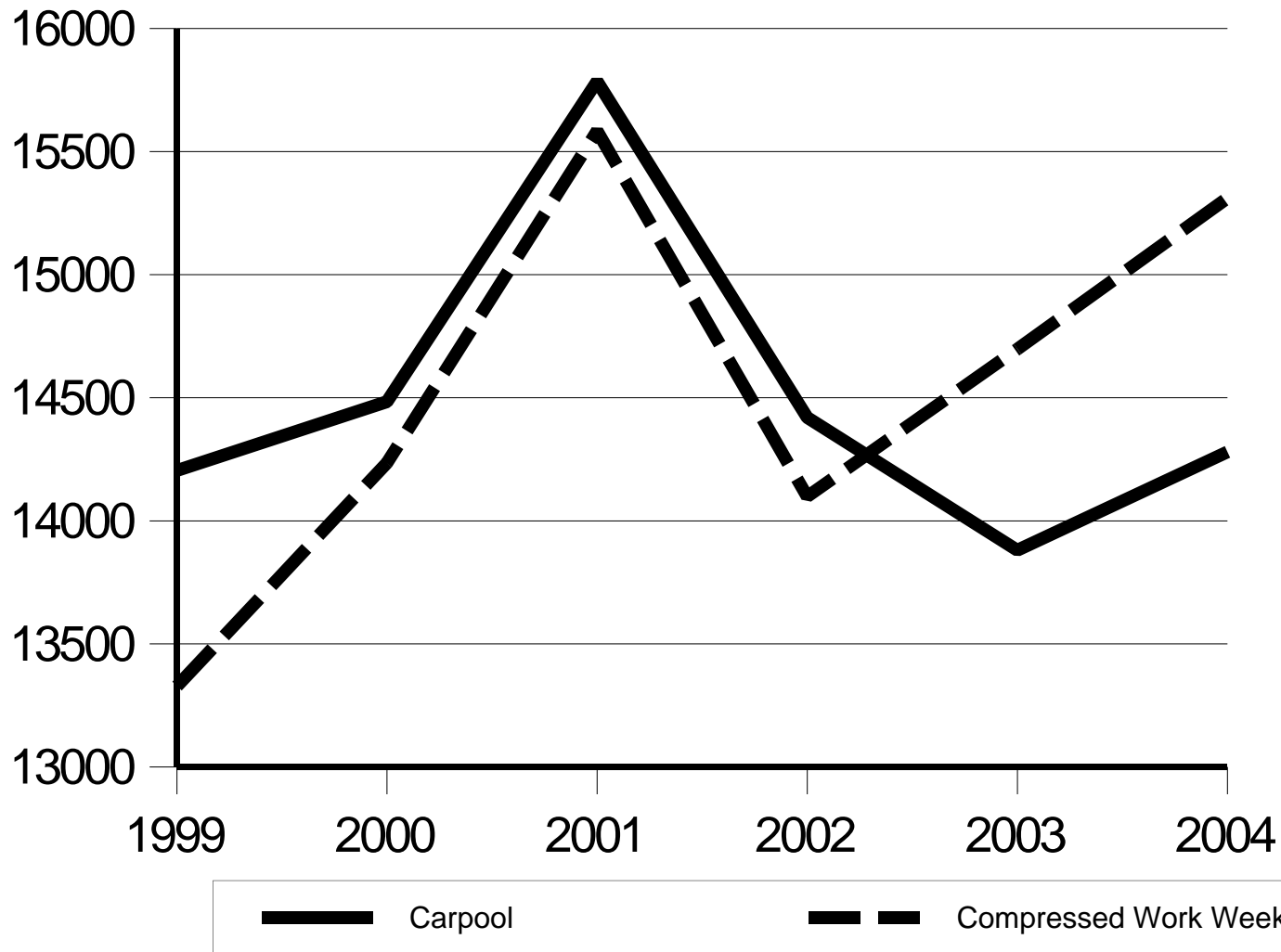
Goal Range = 15% to 37% (depending on years in program)

Based on one day a week usage.

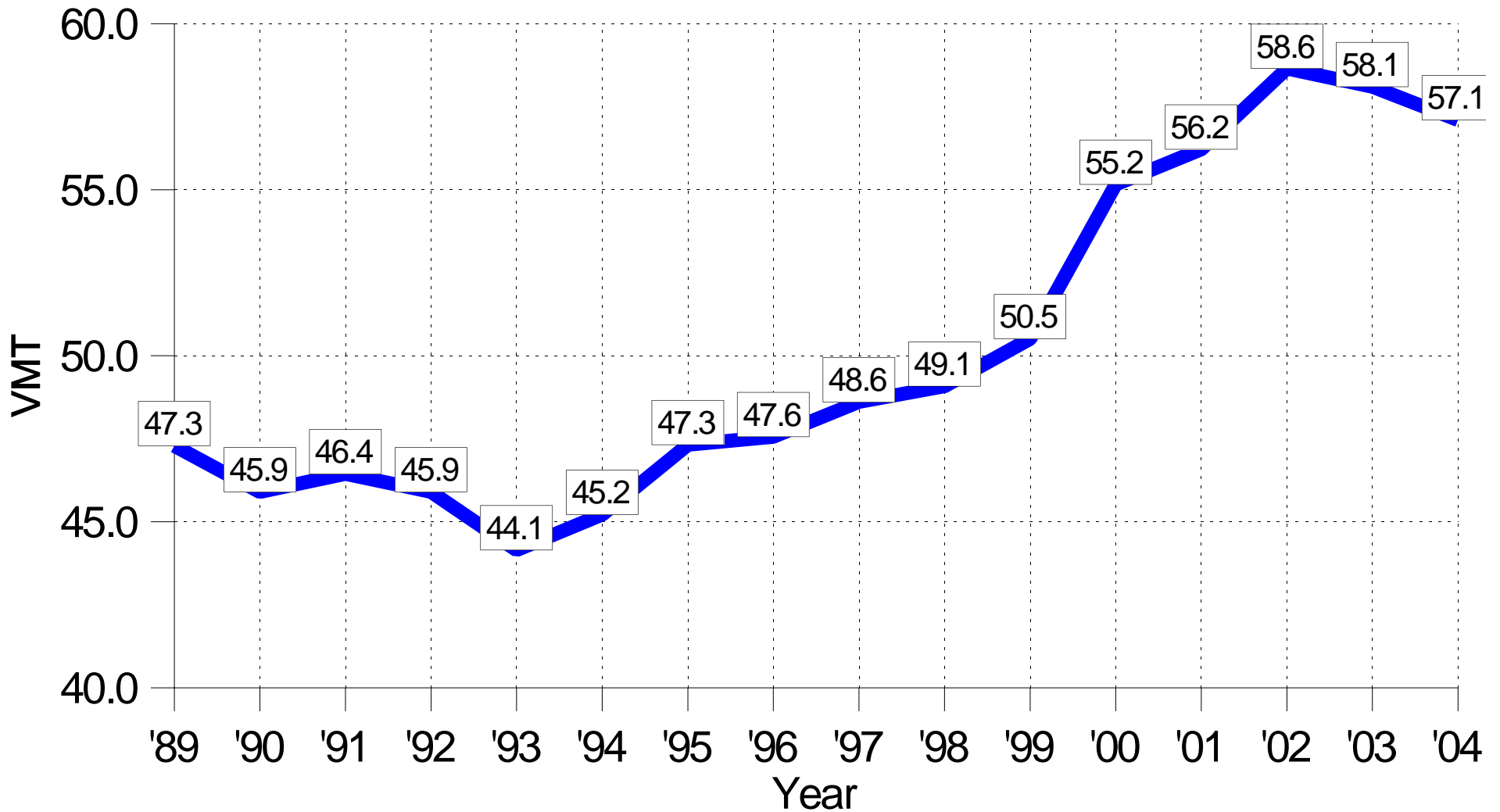
Alternate Mode Usage Responses



Alternate Mode Usage Responses (Continued)

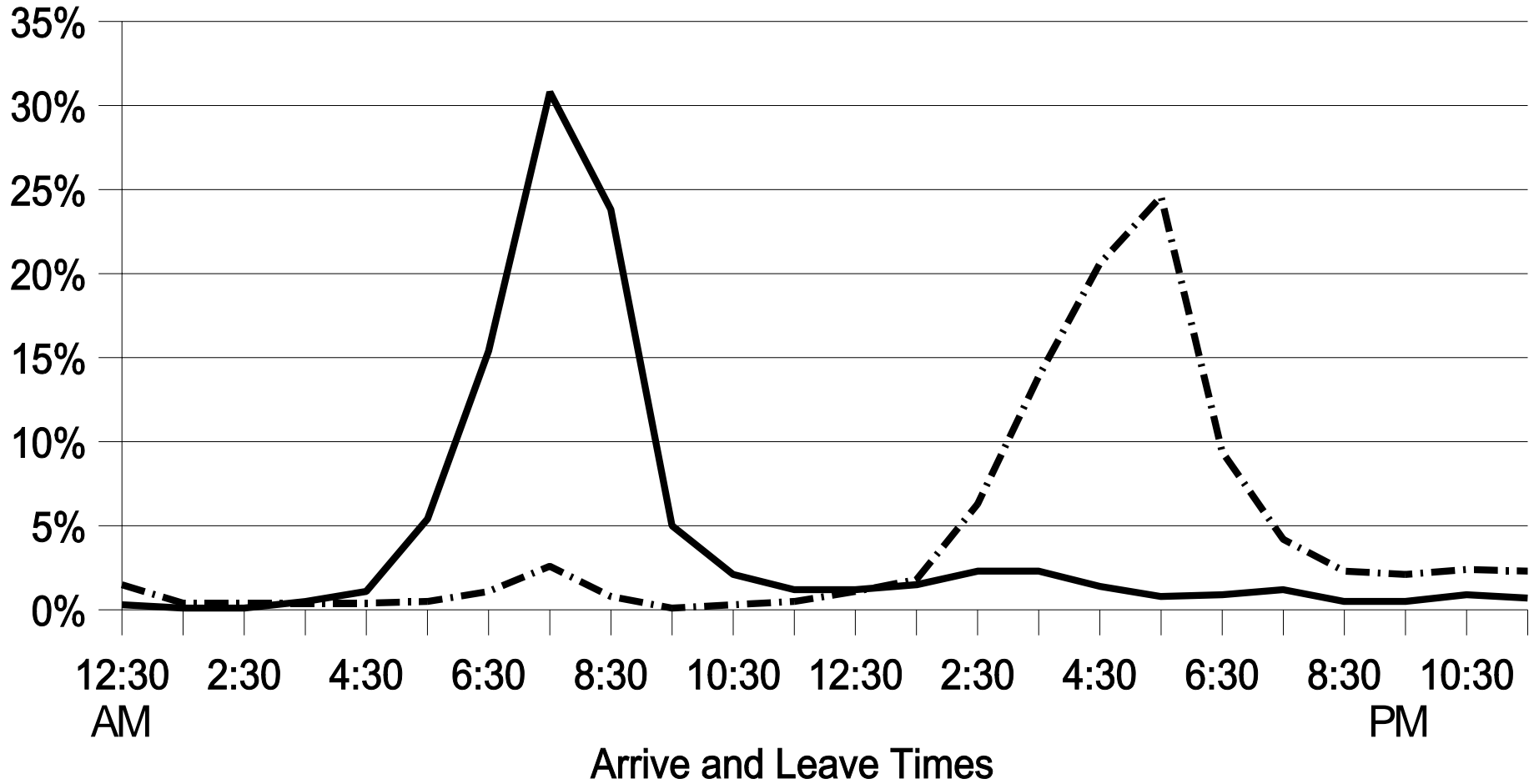


Vehicle Miles Traveled*



* The VMT above is the regional one-way weekly miles traveled from home to work factored by occupants in a motor vehicle.

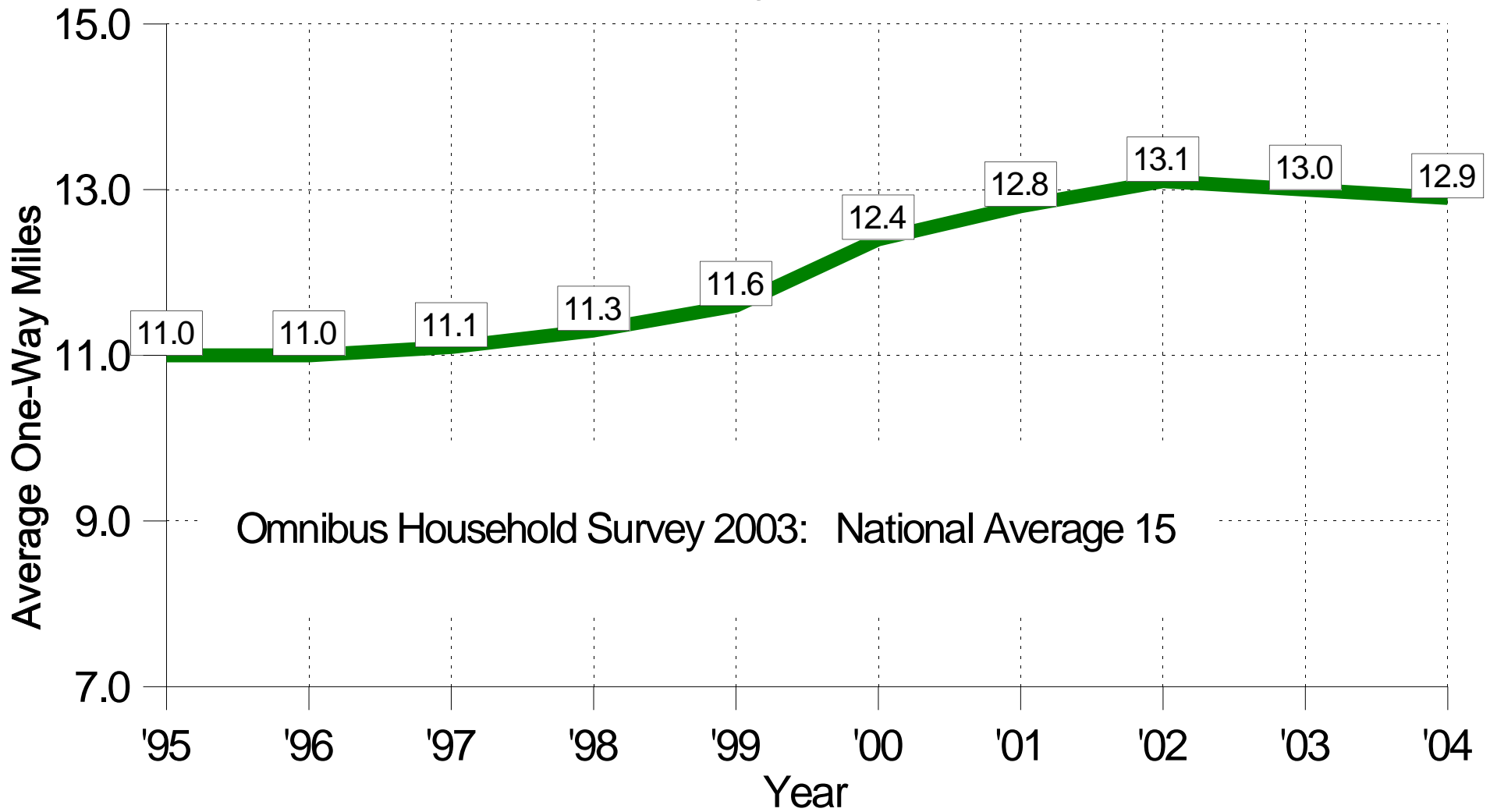
Work Related Trips



— Arrive at Work - · - · - Leave Work

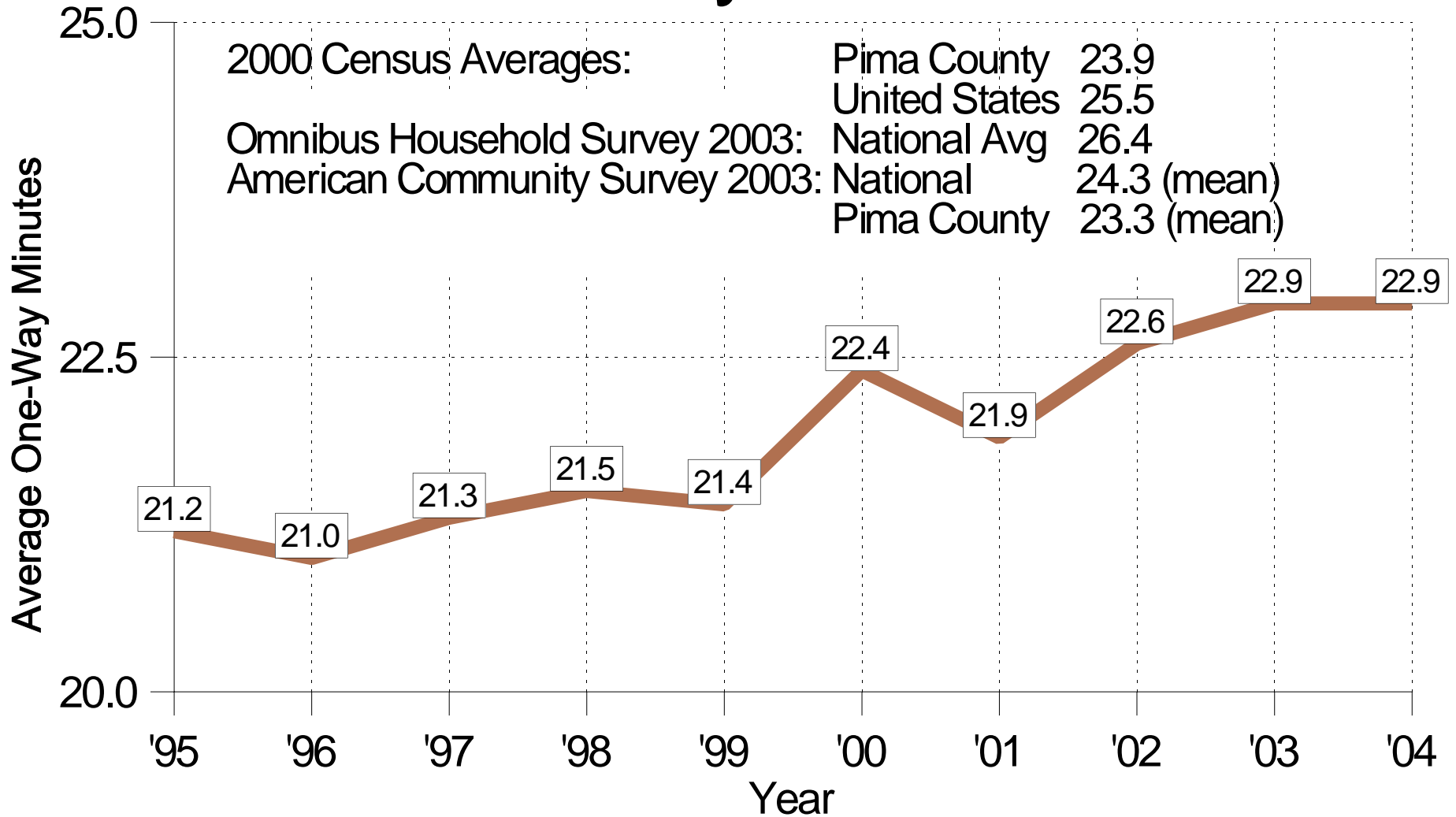
Morning (Arrive) Peak - 8:00 am
Evening (Leave) Peak - 5:00 pm
(same as previous year)

One-Way Miles



2004 Average One-Way Miles: 12.9

One-Way Minutes



2000 Census Averages:

Pima County 23.9

United States 25.5

Omnibus Household Survey 2003: National Avg 26.4

National 24.3 (mean)

American Community Survey 2003: Pima County 23.3 (mean)

Pima County 23.3 (mean)

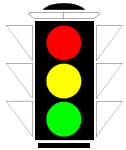
2004 Average One-Way Minutes: 22.9

Travel Reduction Program Regional Survey Results

	1989	2003	2004	Increase from 1989
# of Sites Surveyed	148	271	279	89%
# of Employees	77,230	108,705	112,588	46%
Survey Response Rate	68.5%	86.0%	86.6%	26%
Alternate Mode Usage	17.6%	28.6%	29.2%	66%
Vehicle Miles Traveled	47.3	58.1	57.1	21%
One-Way Miles	10.6	13.0	12.9	22%
One-Way Minutes	21.0*	22.9	22.9	9%
Sites Meeting Goal	N/A	35.4%	40.1%	N/A

* Source 1990 Census

2004 TRP IMPACT SAVINGS



86.5 million driving miles

Using TRP survey response data



4.3 million gallons of gasoline

Using 20 miles per gallon (average vehicle)



32.4 million dollars

Using 37.5 cents per mile (IRS Standard Mileage Rate for 2004)



2.5 million pounds of pollution

Using 1 pound of pollution per 35 miles driven (EPA Model)