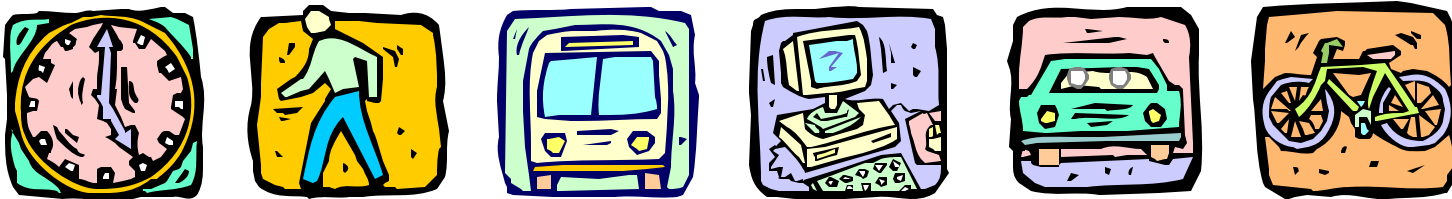


# TRAVEL REDUCTION PROGRAM 2003 REGIONAL SURVEY RESULTS



May 2004

# Join The Winning Team



PIMA ASSOCIATION OF GOVERNMENTS

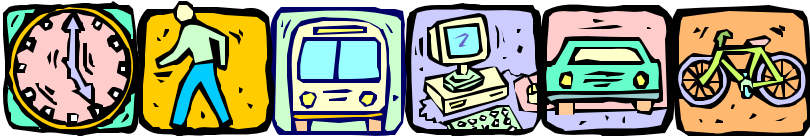
[WWW.PAGNET.ORG](http://WWW.PAGNET.ORG)



# Jurisdictions

## Pima Association of Governments

- Pima County
- City of Tucson
- City of South Tucson
- Town of Marana
- Town of Oro Valley
- Town of Sahuarita
- Pascua Yaqui Tribe (Non-TRP)
- Tohono O'odham Nation (Non-TRP)



# Regional Task Force Members

## **MAJOR EMPLOYERS (10) - Elected**

Caryl Bortner	University Medical Center
Cathie Dahar	Tucson Electric Power Company
Charles Franz	The University of Arizona
Ron Gonzales	Raytheon Missile Systems
Alisha Meza	Marana Unified School District
Jackie Murphy	Tucson Airport Authority
Daniel Peña	Arizona's Children Association
Joe Portale	Pima County Community College District
Richard Reetz	APAC Customer Services, Inc.
Willie Wash	Arizona State Prison - Tucson Complex

## **JURISDICTION REPRESENTATIVES (6)**

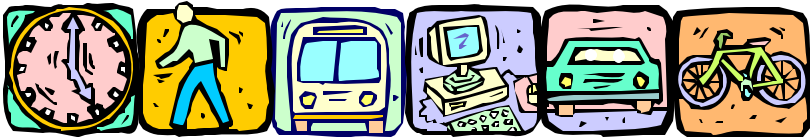
Trace Tang	City of Tucson
Beth Gorman	Pima County
Jeff Grant	Town of Oro Valley
Jane Howell	Town of Marana
Richard Salaz	City of South Tucson
Sam Testa	Town of Sahuarita

**PUBLIC INTEREST ORGANIZATION REPRESENTATIVES (2) -Vacant**

**VOLUNTARY TRP PARTICIPANTS (2) - Vacant**

# Ordinance Mandates (Employer \$ 100 FTE)

- Appoint a Transportation Coordinator
- Distribute Alternate Mode Information
- Annually Survey Employees
- Annually Submit a TRP Plan



# AMU Goals

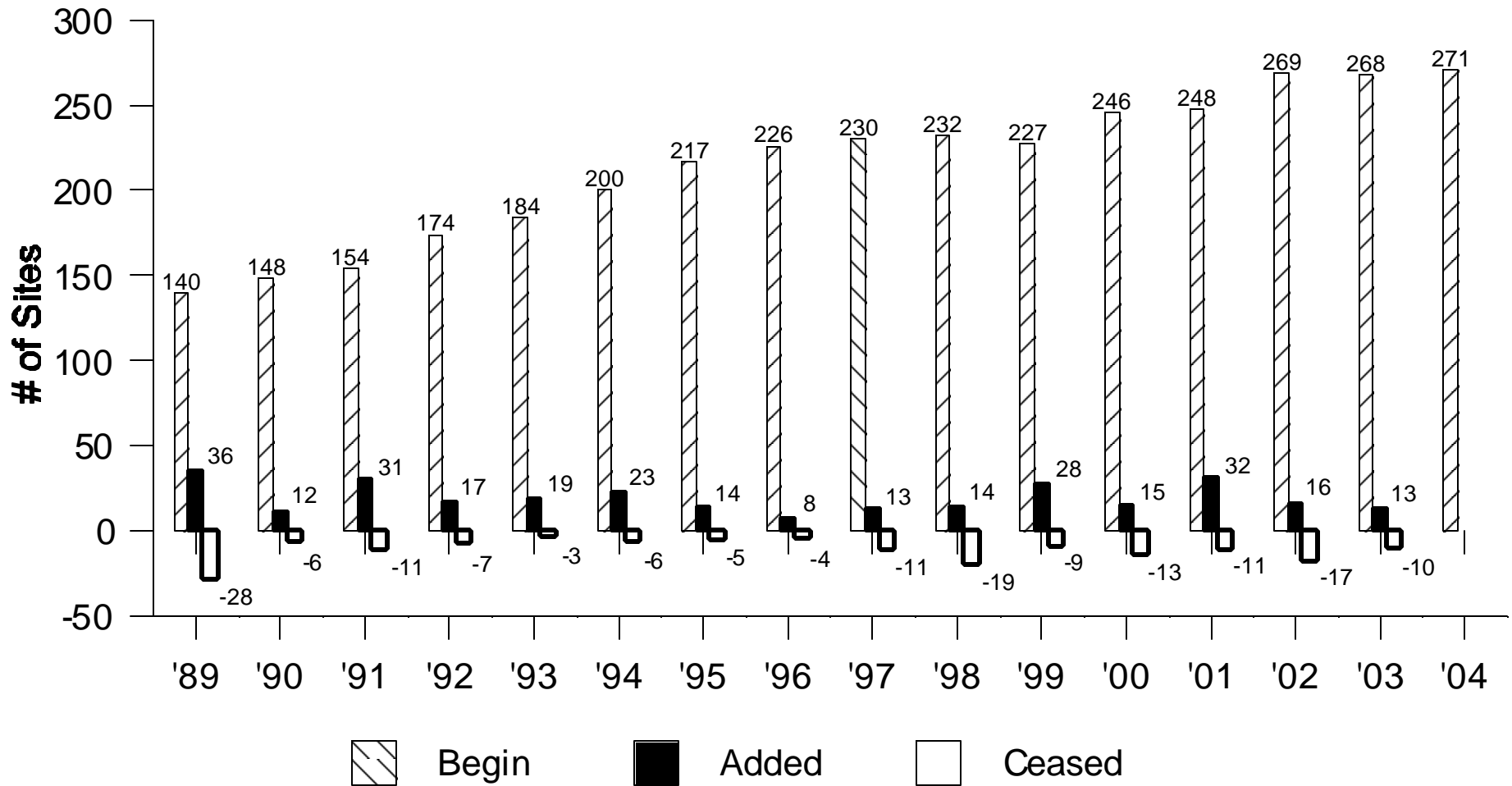
Compliance Year	AMU Goal
Baseline	N/A
1st	15%
2nd	20%
3rd	25%
4th	26%
5th	27%
6th	28%
7th	29%
8th	30%
9th	31%
10th	32%
11th	33%
12th	34%
13th	35%
14th	36%

AMU = Alternate Mode Usage (one day a week)

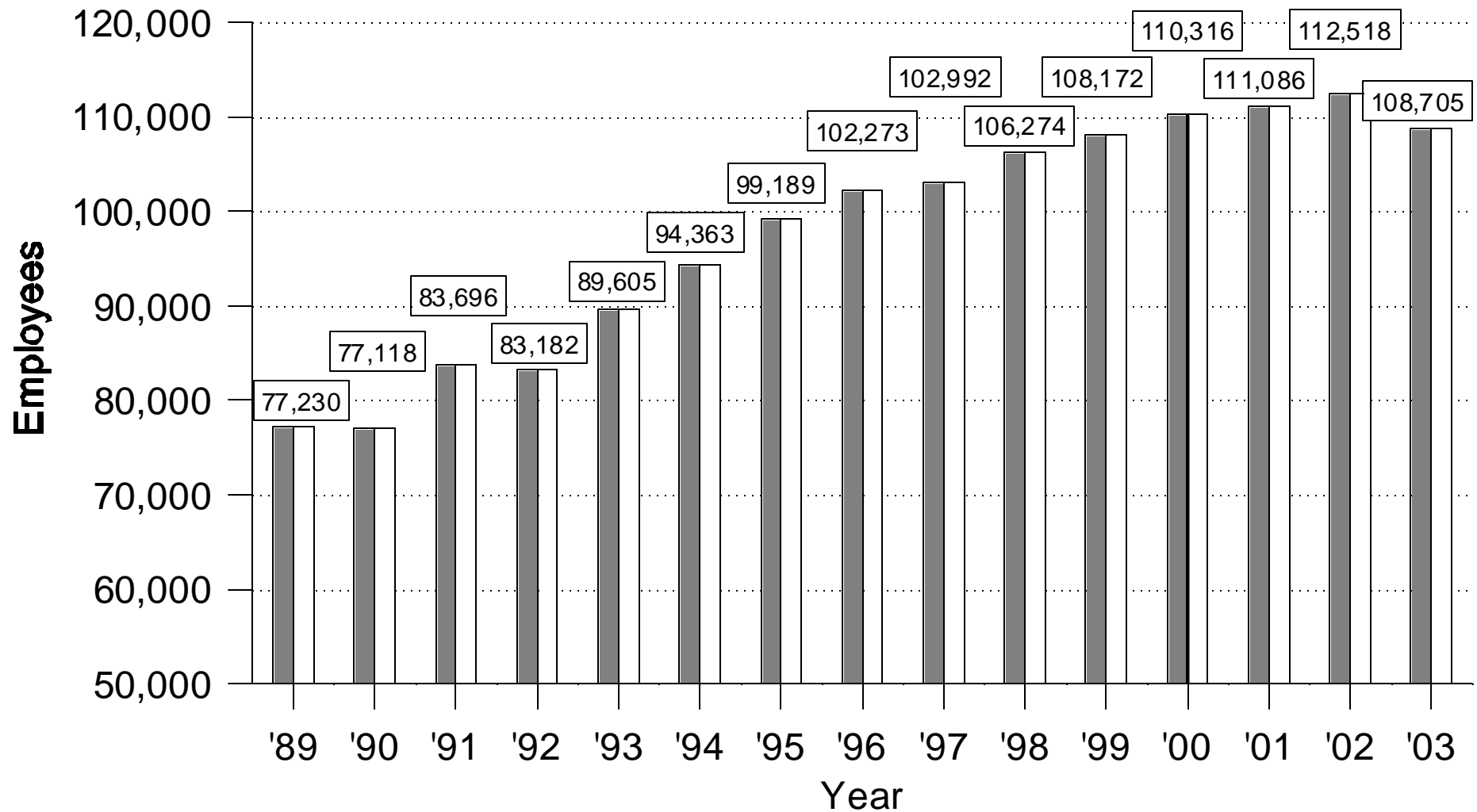
After 3rd Compliance year, AMU goal increases by 1% until 40% cap is reached.

Note: For 3rd compliance year or greater, Vehicle Miles Traveled goal, beginning in 2004, will be 1.5% reduction from previous year if AMU is 25% or more.

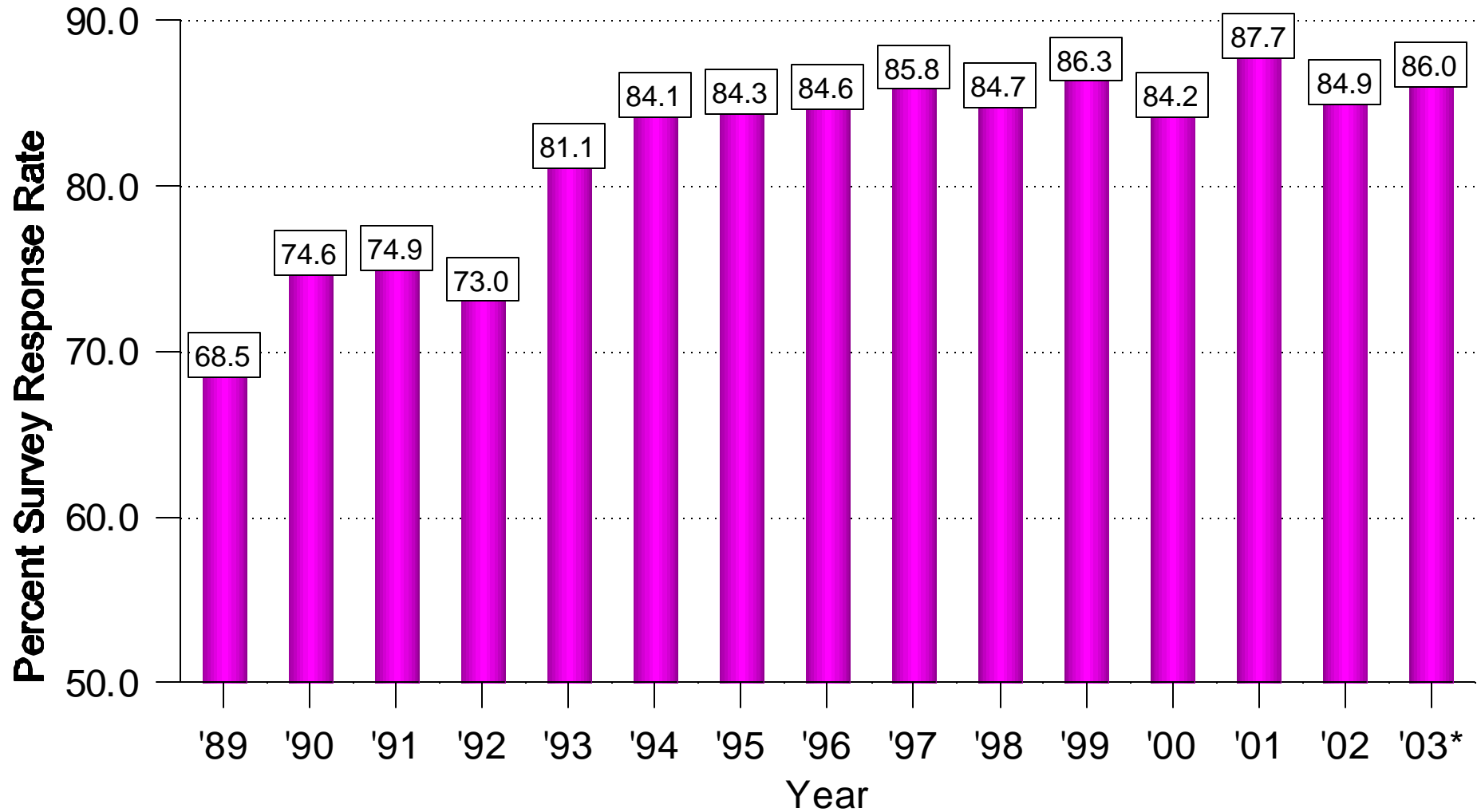
# Participating Sites



# Number of Employees



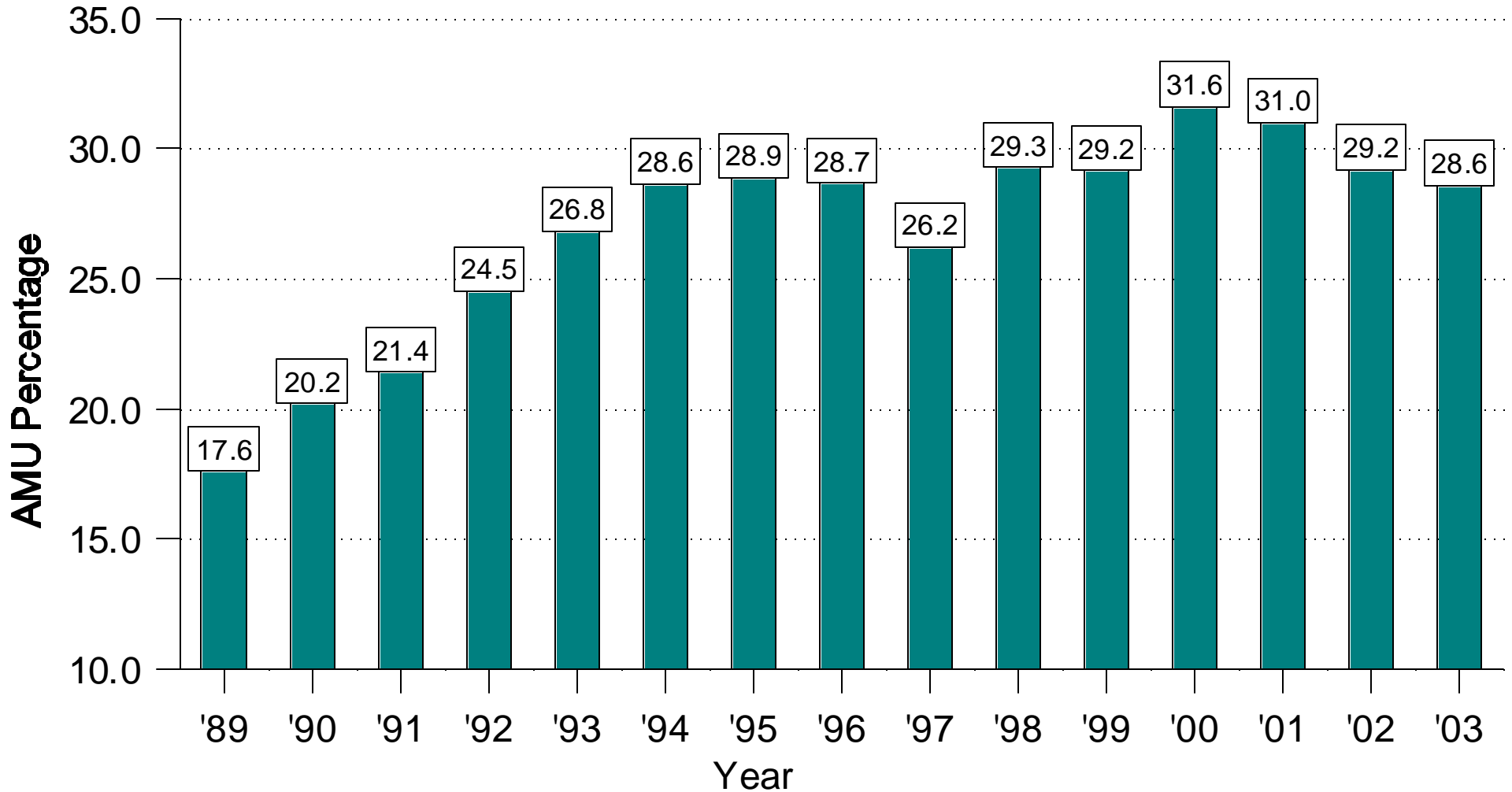
# Survey Response Rate



\*93,503 valid surveys processed

Regional Goal = 70%

# Alternate Mode Usage

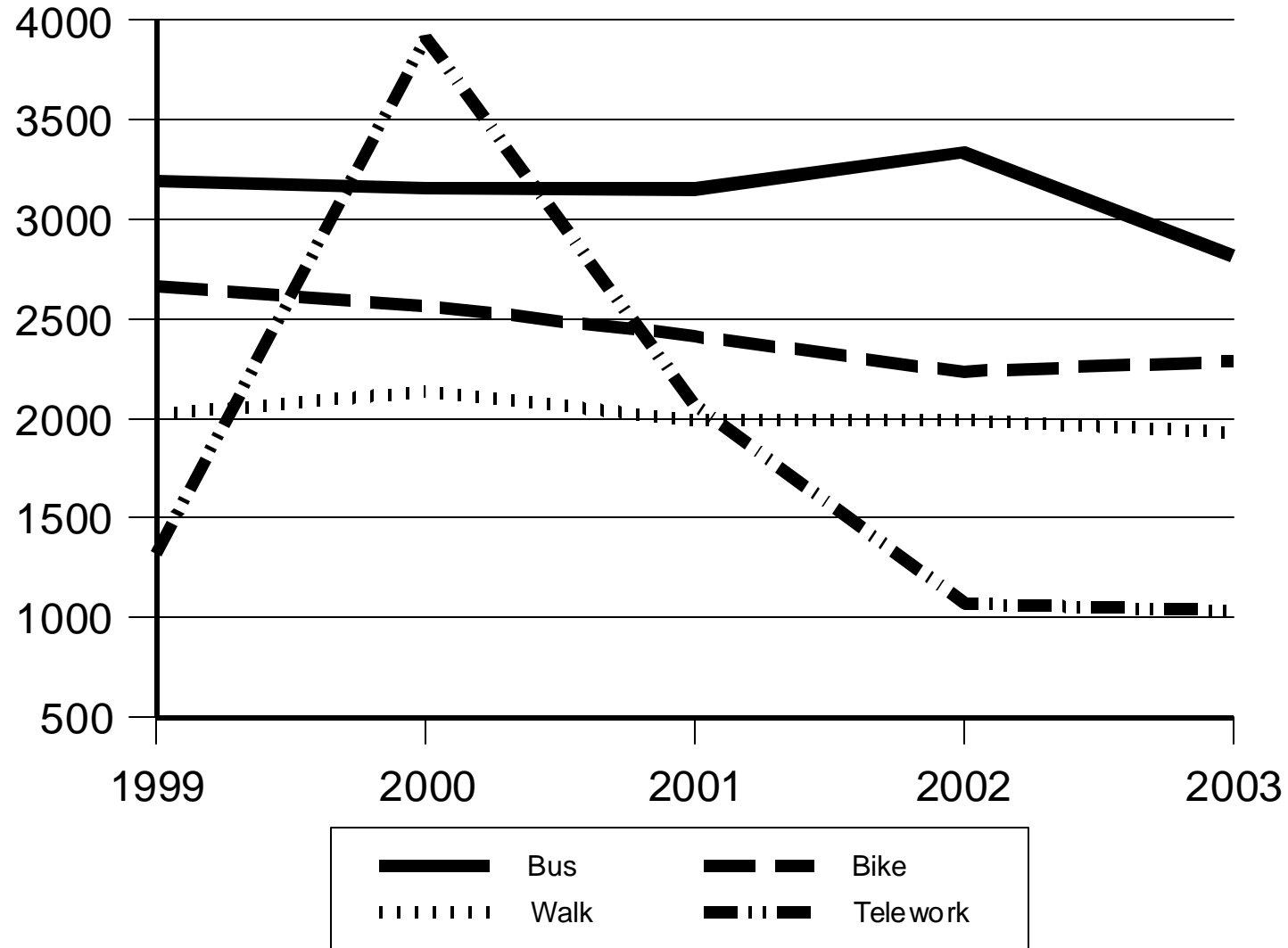


Goal Range = 15% to 36% (depending on years in program)

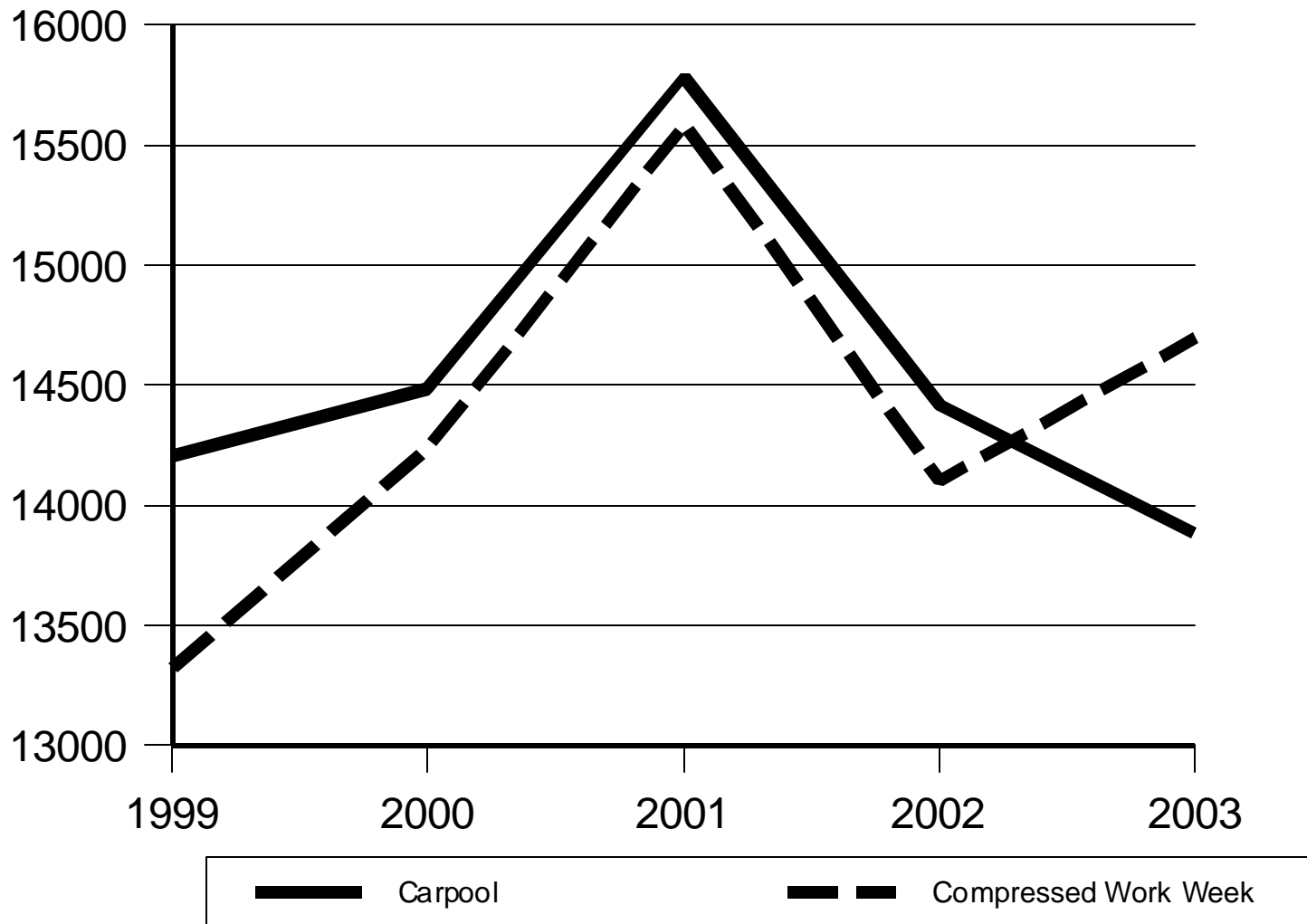
2003 TRP Regional Results

Based on one day a week usage.

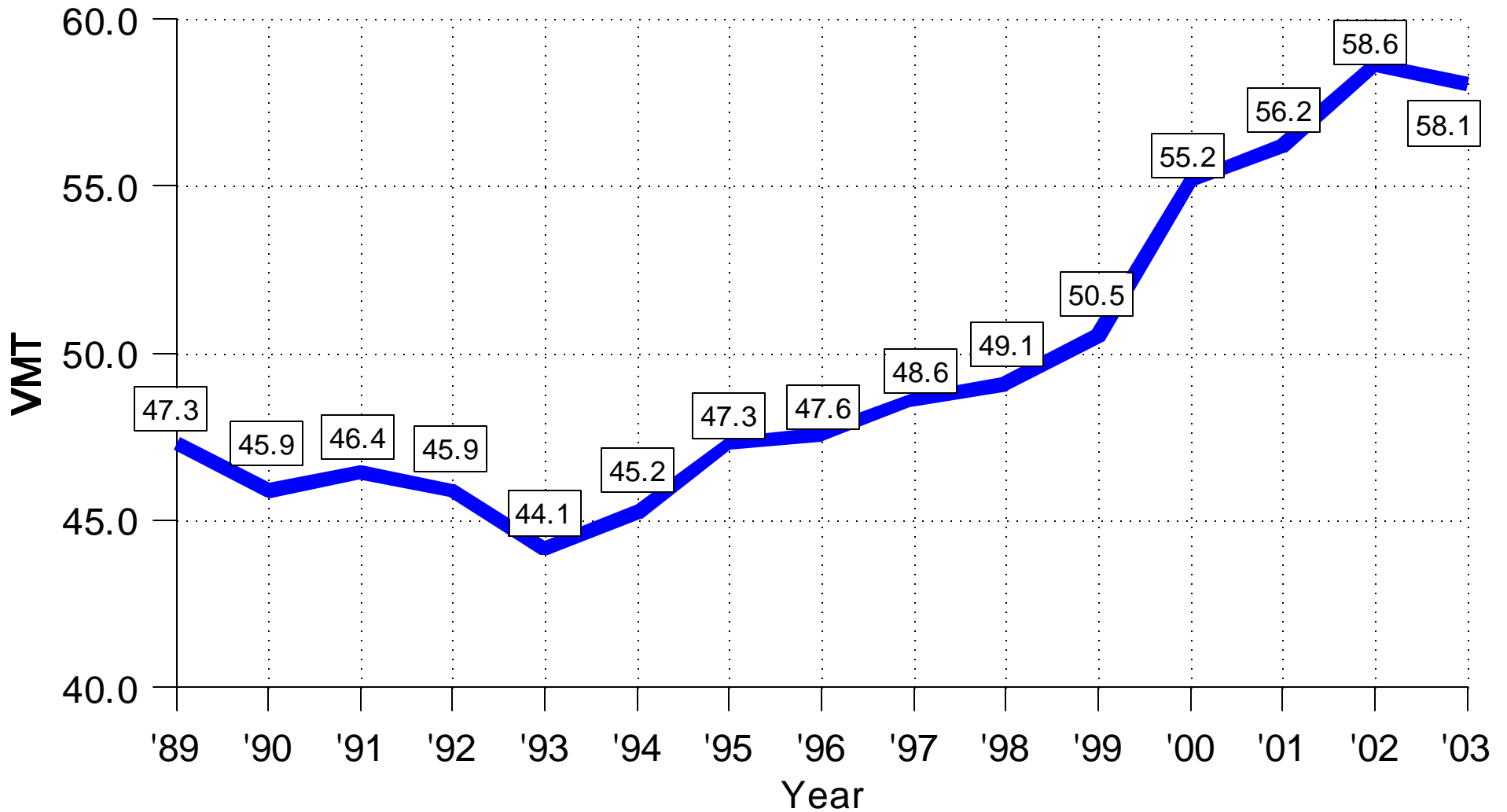
# Alternate Mode Usage Responses



# Alternate Mode Usage Responses (Continued)

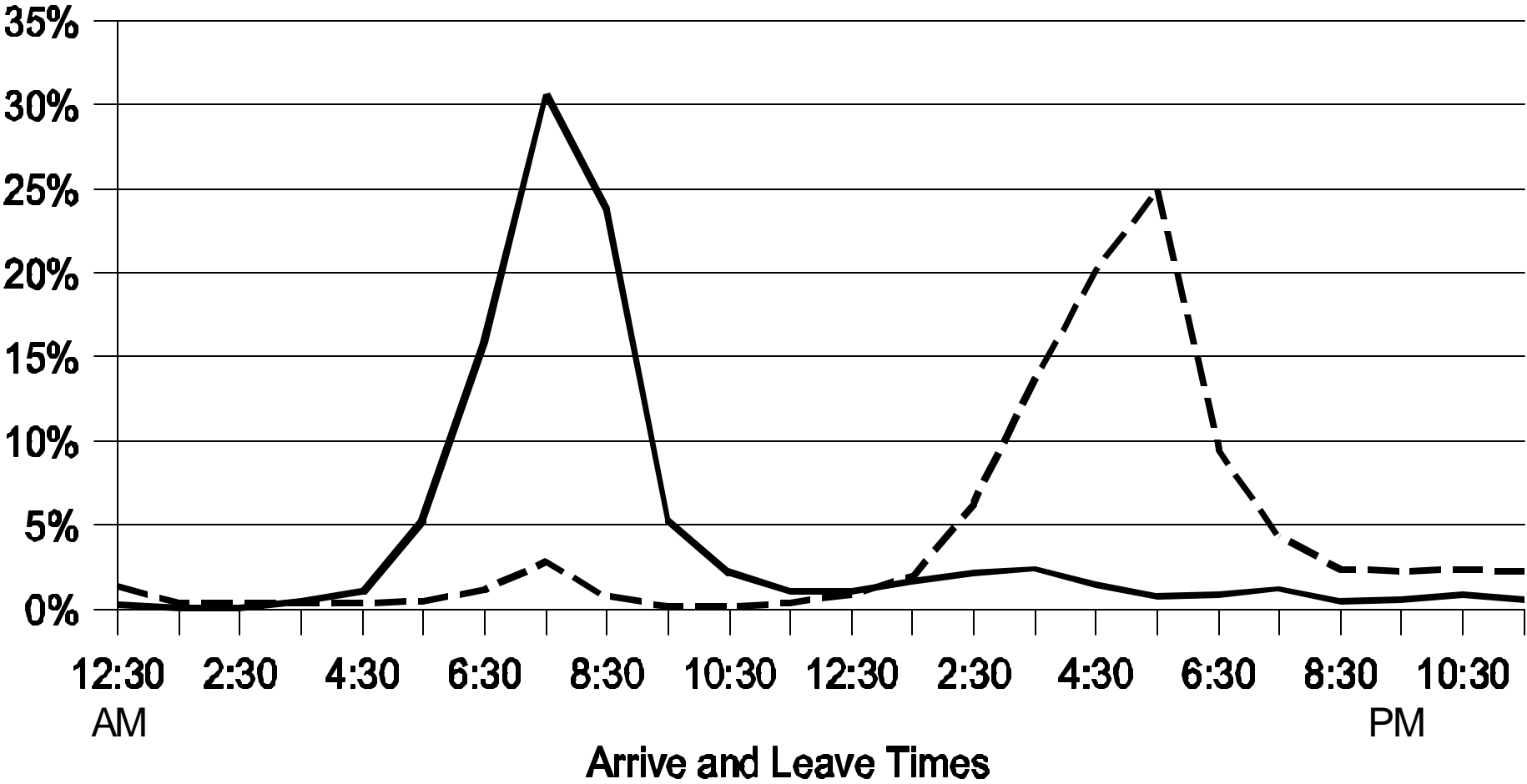


# Vehicle Miles Traveled\*



\* The VMT above is the regional one-way weekly miles traveled from home to work factored by occupants in a motor vehicle.

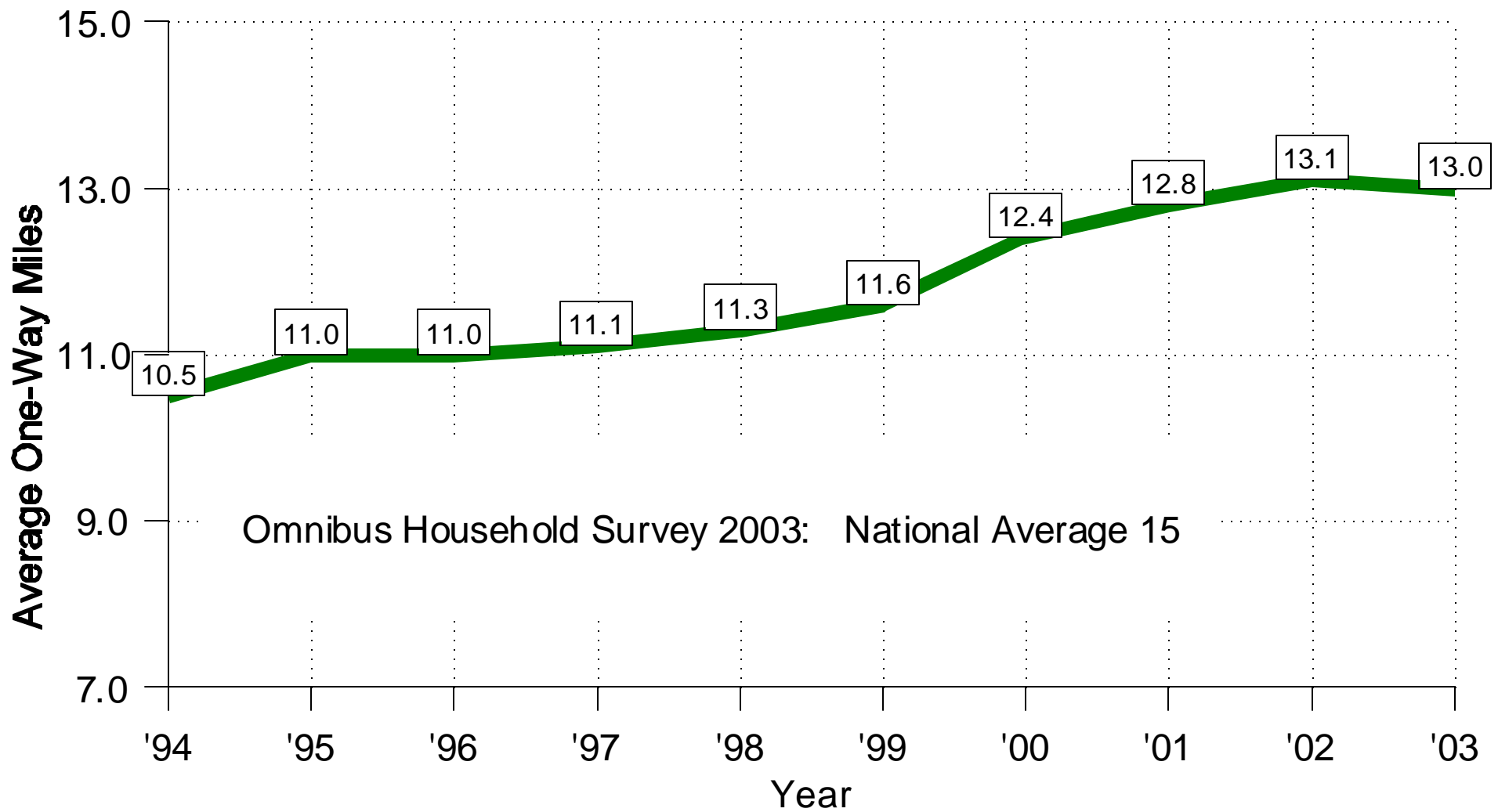
# Work Related Trips



— Arrive at Work      - - - Leave Work

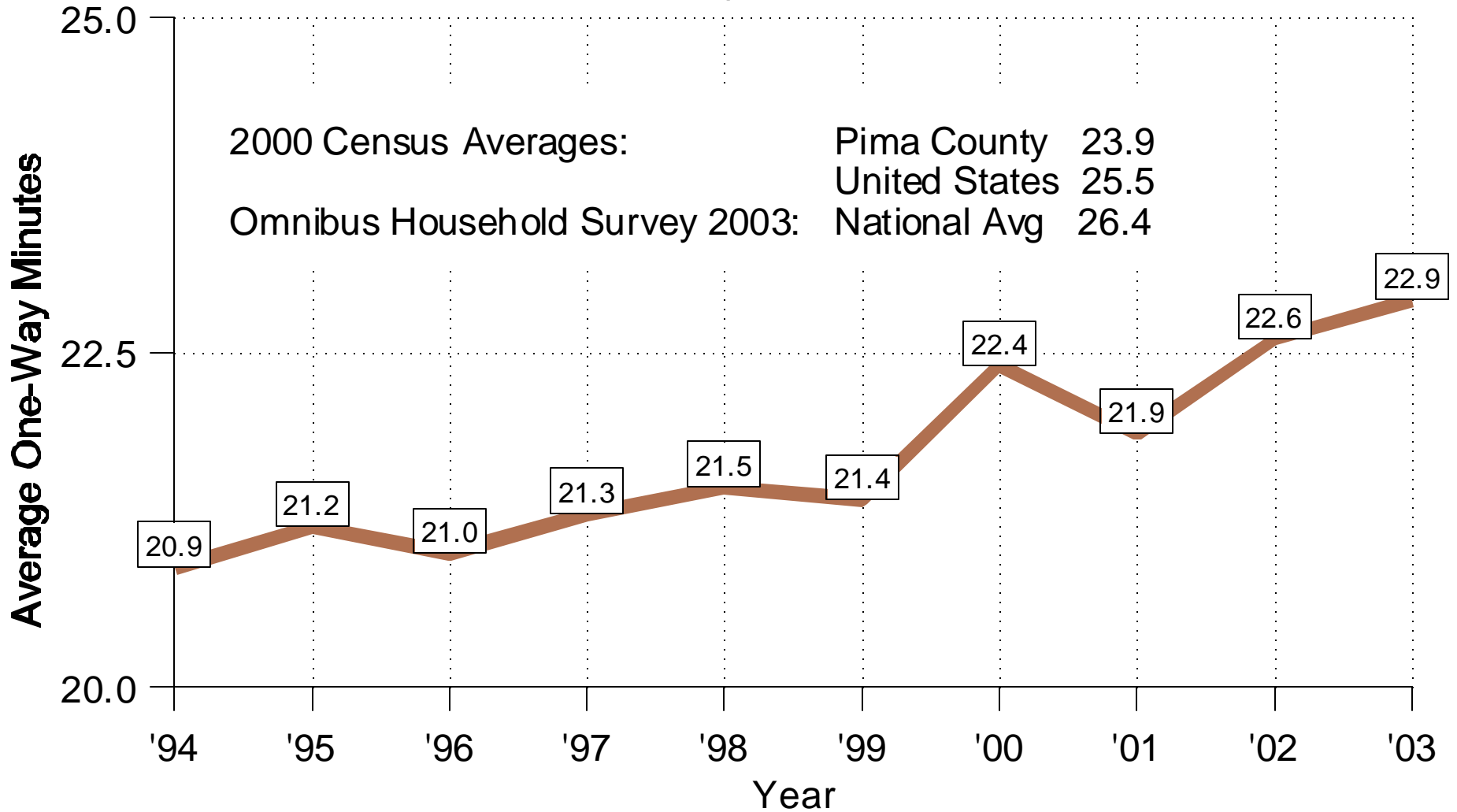
Morning (Arrive) Peak - 8:00 am  
Evening (Leave) Peak - 5:00 pm  
(same as previous year)

# One-Way Miles



2003 Average One-Way Miles: 13.0

# One-Way Minutes



2000 Census Averages:

Pima County 23.9

United States 25.5

Omnibus Household Survey 2003:

National Avg 26.4

2003 Average One-Way Minutes: 22.9

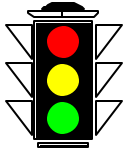
# Travel Reduction Program

## Regional Survey Results

	<b>1989</b>	<b>2002</b>	<b>2003</b>	<b>Increase from 1989</b>
# of Sites Surveyed	148	269	271	83%
# of Employees	77,230	112,518	108,705	41%
Survey Response Rate	68.5%	84.9%	86.0%	26%
Alternate Mode Usage	17.6%	29.2%	28.6%	63%
Vehicle Miles Traveled	47.3	58.6	58.1	23%
One-Way Miles	10.6	13.1	13.0	23%
One-Way Minutes	21.0*	22.6	22.9	9%
Sites Meeting Goal	N/A	38.7%	35.4%	N/A

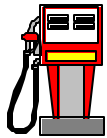
\* Source 1990 Census

# 2003 TRP IMPACT SAVINGS



81.4 million driving miles

*Using TRP survey response data*



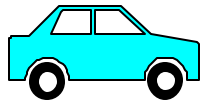
4.1 million gallons of gasoline

*Using 20 miles per gallon (average vehicle)*



29.3 million dollars

*Using 36 cents per mile (IRS Standard Mileage Rate for 2003)*



2.3 million pounds of pollution

*Using 1 pound of pollution per 35 miles driven (EPA Model)*