



# SOUTHEAST AREA ARTERIAL STUDY

## Executive Summary

### Project Purpose

The Southeast Area Arterial Study was undertaken to prepare a Major Streets and Routes (MS&R) Plan for an area of over 200 square miles, roughly bounded by I- 19, Valencia Road, I-10, SR-83, and the Santa Rita Experimental Range/Coronado National Forest south of Sahuarita Road. This emerging growth area currently has little improved transportation infrastructure.

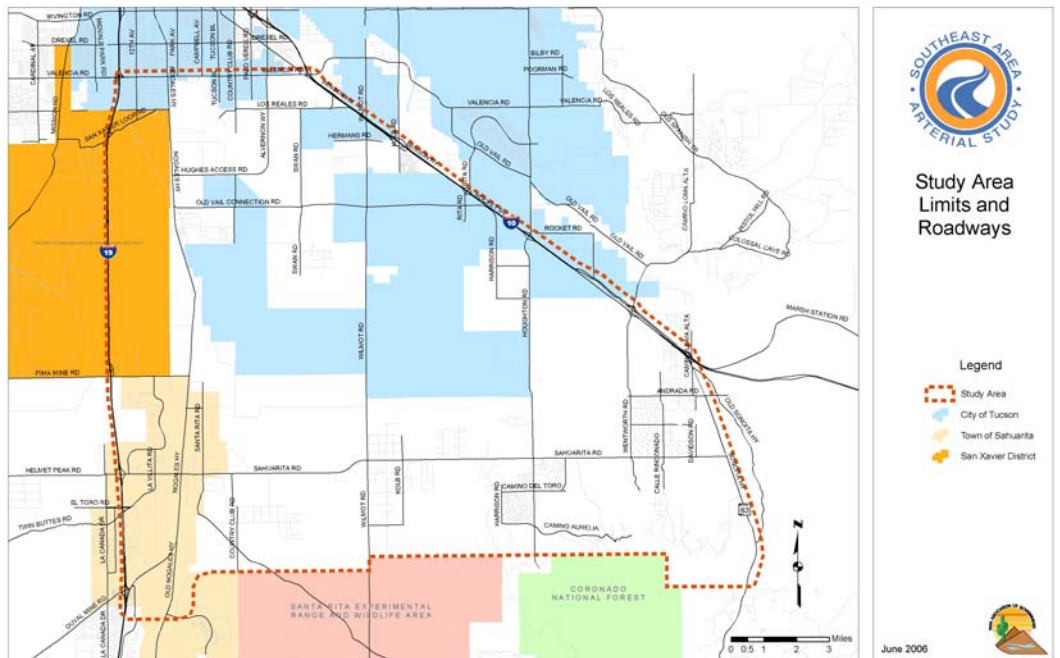
The resulting MS&R Plan will be a planning and policy tool for establishing roadway functional classifications; preliminary alignments; and rights-of-way for fully accessed-controlled, limited access-controlled, and arterial roadways. The planned corridors will be suitable for a variety of multimodal transportation facility development and will allow for suitable planning in advance of development.

The study was completed for the Pima Association of Governments (PAG) by Kimley Horn and Associates. The study effort was guided by a Technical Advisory Committee (see list on back) representing interests and stakeholders in the area.

June 2006

### OVERVIEW

Planning for the Southeast Area Arterial Study considered population and employment estimates for the year 2030 and beyond within the study area. The area's population in the year 2000 was approximately 30,000 and is expected to increase to 250,000 by 2030 and to 650,000 at buildout. Employment should reach 100,000 by 2030 and 200,000 at buildout. Buildout populations for the area coincide with a regional population of approximately 2 million. Transportation models were developed to evaluate the projected travel demand and to determine appropriate roadway types and locations that could serve the demand. These conceptual roadways were further refined using GIS analysis to identify environmentally sensitive areas and other constraints. In addition, input on future development within the study area was provided through interviews with jurisdictions and staff of major activity centers located within and adjacent to the study area.



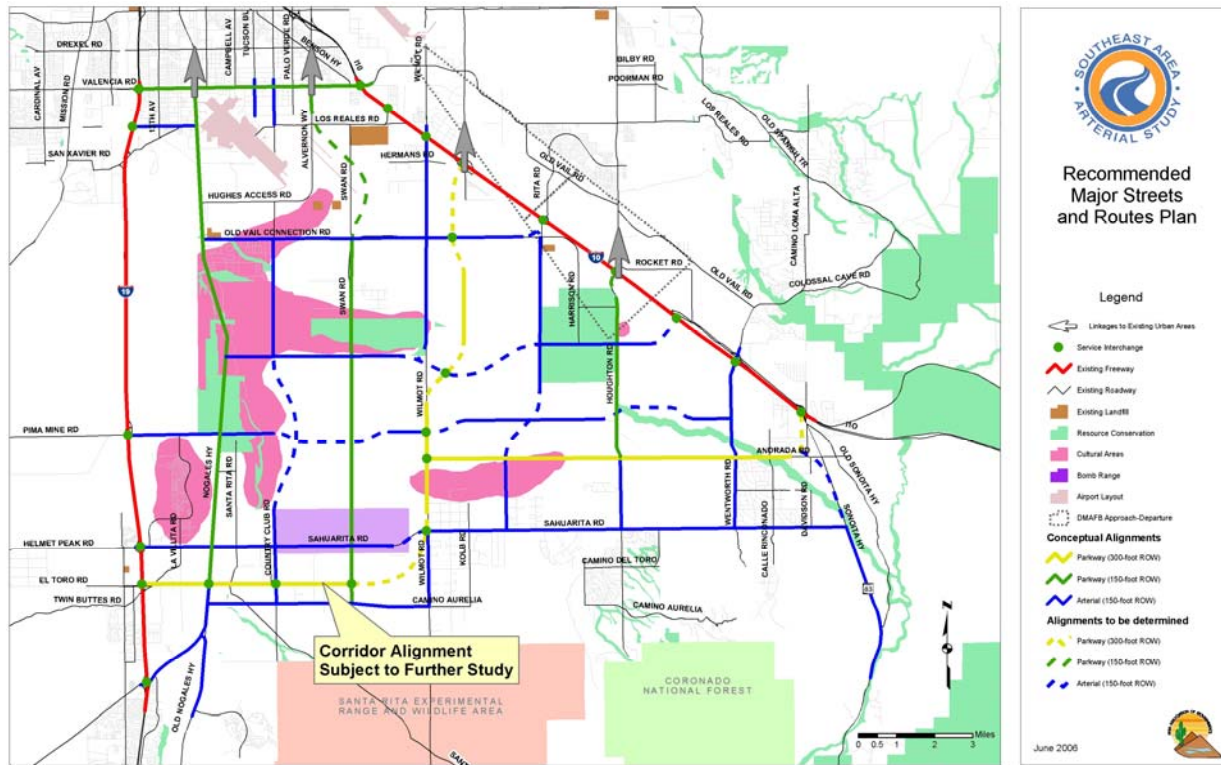
The study area contains lands controlled by state, county, local, and Tribal jurisdictions. Key activity centers currently situated in the area include the Tucson International Airport, the University of Arizona Science and Tech Park, Federal and State Corrections facilities, the Pima County Fairgrounds, the Santa Rita Bombing Range and the metropolitan City of Tucson Landfill.

### GUIDING PRINCIPLES

The resulting corridor alignments reflect the following guiding principles:

- Serve buildout travel demand
- Minimize impacts to environmentally sensitive areas (riparian, drainage, cultural, etc.)
- Avoid impacts to the San Xavier District
- Connect to the regional roadway system
- Maintain freeway interchange spacing
- Serve existing activity centers
- Maintain consistency with other transportation study recommendations
- Allow flexibility for land development

# RECOMMENDATIONS



Solid lines reflect alignments on existing rights-of-way or section lines. Dashed alignments reflect a need for resource avoidance and further definition.

Recommendations were made for approximately 190 centerline miles of corridors:

- 20 miles fully access-controlled corridors (300' right-of-way)
- 48 miles limited access-controlled corridors (150' right-of-way)
- 122 miles arterial corridors (150' right-of-way)

Total construction cost for the Major Streets and Routes Plan, including pre-design studies and design, is estimated to be approximately \$2.5 billion in 2005 dollars.

Letters and resolutions supporting the study recommendations were received from the San Xavier District Council and the Tucson Airport Authority. Verbal support was received from the City of Tucson and Pima County, both of which are working on updates to their Major Streets and Routes Plans. The Town of Sahuarita, however, objected to the east-west roadway connection to I-19 using the El Toro Road alignment. The Town formally asked that PAG evaluate alternatives to the El Toro alignment for the east-west connection to I-19. Additional studies will be required to resolve issues associated with a recommendation for a 300-foot (right-of-way) corridor connecting I-10 to I-19 in the Southeast Area.

## IMPLEMENTATION

The successful implementation of a Major Streets and Routes Plan for the Southeast Area will require (1) advanced corridor preservation to gain governmental stewardship over the corridors, (2) dedication of rights-of-way and appropriate facility construction as rezoning and development occur, (3) earmarking funds for acquisition and construction, and (4) detailed planning, design and construction of each corridor. The implementation of this study will require the involvement of Pima County, City of Tucson, Town of Sahuarita, and the San Xavier District of the Tohono O'odham Nation plus the Pima Association of Governments and the Regional Transportation Authority. Some of the higher capacity, limited access roadways shown on the network may be candidates for state or federal routes and would necessitate the involvement of the Arizona Department of Transportation and the Federal Highway Administration.

## Members of the Technical Advisory Committee (TAC)

**Arizona Department of Transportation**  
 Phone: 602-712-6407, Fax: 602-712-3046  
<http://www.dot.state.az.us/>  
 Representative: Sandra Gilbert

**Pima County**  
 Phone: 520-740-6800, Fax: 520-623-5411  
<http://www.dot.co.pima.az.us/>  
 Representatives: Manabendra Changkokoti;  
 Johnathan Crowe, AICP

**Pima Association of Governments**  
 Phone: 520-792-1093, Fax: 520-792-9151  
<http://pagnet.org/>  
 Representative: Don Freeman, P.E.

**Arizona State Land Department**  
 Phone: 602-542-2646, Fax: 602-364-0272  
<http://www.land.state.az.us/>  
 Representatives: Greg Keller; Catherine Balzano

**Tucson Airport Authority**  
 Phone: 520-573-4811, Fax: 520-573-8006  
<http://www.tucsonairport.org/>  
 Representatives: Jill Merrick; Mike Carlson

**Town of Sahuarita**  
 Phone: 520-648-1972, Fax: 520-625-9879  
<http://www.ci.sahuarita.az.us/>  
 Representative: John Neunuebel

**City of Tucson**  
 Phone: 520-791-4505, Fax: 520-791-4130  
<http://dot.ci.tucson.az.us/>  
 Representatives: Gary Oaks; Michael Wyneken

**San Xavier District of Tohono O'odham Nation**  
 Phone: 520-294-5727, Fax: 520-294-0613  
<http://www.itcaonline.com/Tribes/tohono.htm>  
 Representative: Mark Pugh